

**DAVEY**

# Vertical Multistage Pumps





# SAVE TIME AND CHECK OUT Davey Online Ordering

**AU** [orders.davey.com.au](https://orders.davey.com.au)

**NZ** [orders.daveynz.co.nz](https://orders.daveynz.co.nz)

Register today and get access to these great features and more:

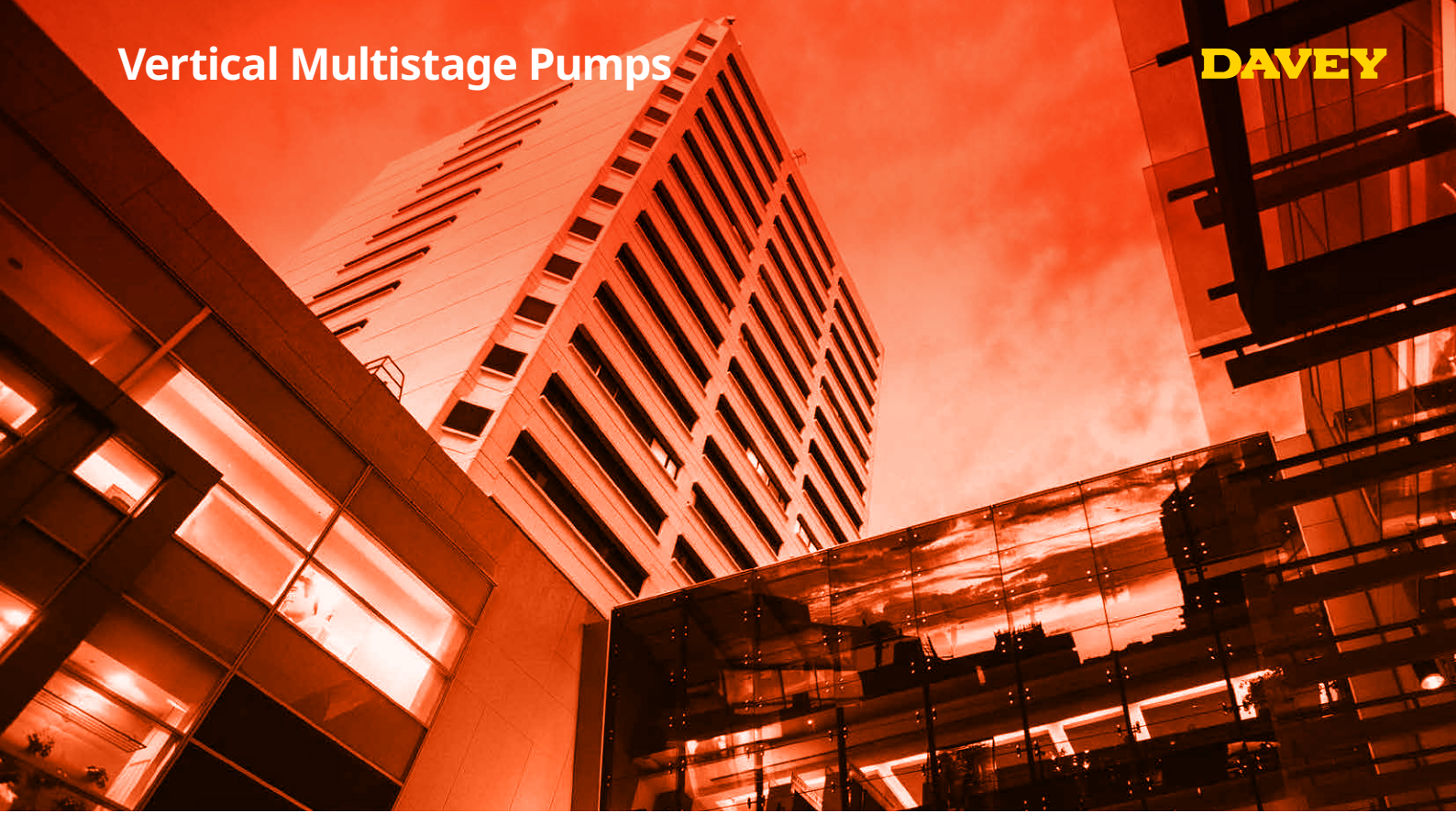
- Quick order entry & consolidation
- Stock availability
- Bulk pricing
- Pay online & purchase history
- Spare parts identification
- Advanced product search

For easy access to Davey Online Ordering, please contact Davey Support on **1300 232 839 (AU)** | **0800 654 333 (NZ)** or self-register at [orders.davey.com.au \(AU\)](https://orders.davey.com.au) | [orders.daveynz.co.nz \(NZ\)](https://orders.daveynz.co.nz)

Terms and conditions of sale available at [daveywater.com](https://daveywater.com)

[daveywater.com](https://daveywater.com)

**DAVEY**



## VERTICAL IN-LINE MULTISTAGE CENTRIFUGAL PUMPS



The Davey VM Series vertical in-line multistage centrifugal pump with stainless steel hydraulic parts is used for the pumping of clean, non-aggressive liquids, free of fibres in suspension.

- Water supply - domestic, rural and industrial
- Commercial - high pressure washing and water treatment
- Pressure boosting and boiler feed
- Agriculture, farming turf water and irrigation

**GUARANTEE**  
2 YEARS

PG - 2022

Tested in compliance with  
**AS/NZS 4020**  
for use in contact with safe drinking water

### FEATURES AND BENEFITS

Vertical multistage centrifugal pump with in line suction and discharge:

- Minimum floor space required and easy to install

All hydraulic parts constructed in stainless steel:

- Long service life
- Corrosion and abrasion resistance

High efficiency stainless steel impeller design:

- Low operating costs
- Less stages required
- Low maintenance

Raised bottom bearing:

- Longer bearing life through reduced risk of damage from sediment

Hard faced mechanical seal:

- Longer seal life

Teflon neck rings:

- Maintains high efficiency
- Reduces vibration and noise
- Reduces sensitivity to thermal expansion

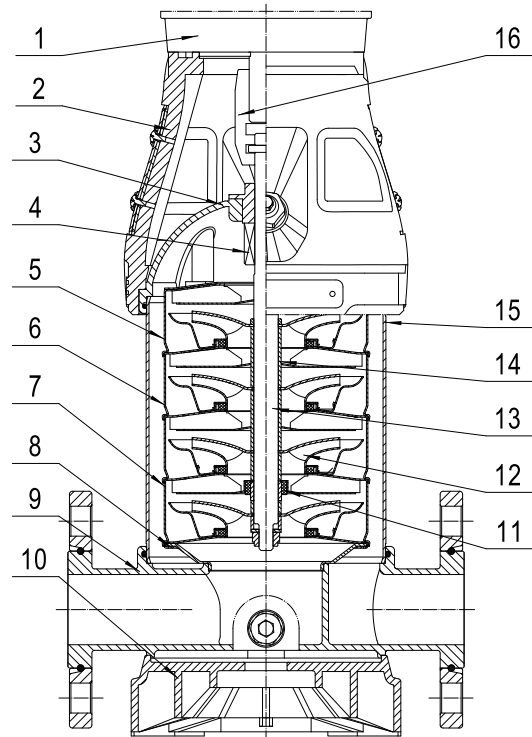
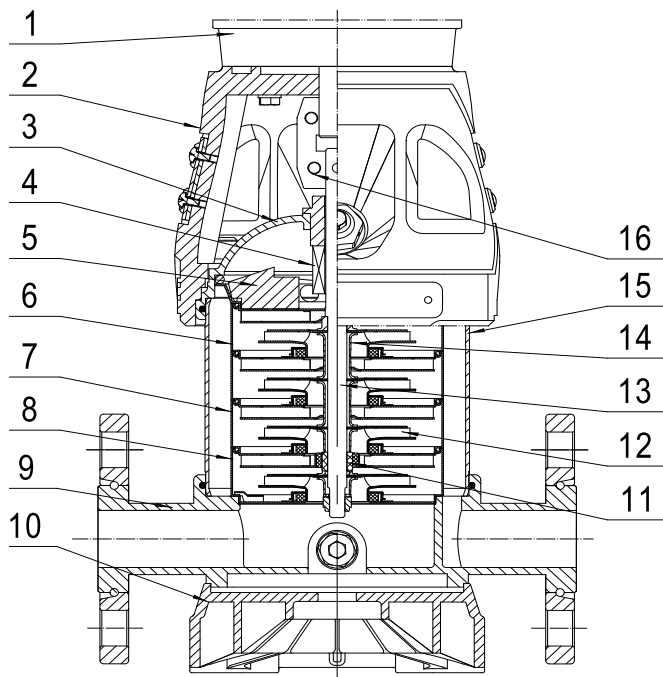
Tungsten carbide intermediate bearing/s (selected models):

- Reduces possible damage from shaft misalignment or vibration

Stainless steel threaded companion flanges with gaskets, nuts, bolts & washers included with every pump:

- Easier installation
- Guaranteed material quality

# Vertical Multistage Pumps



VM 1, 3, 5 MATERIAL LIST

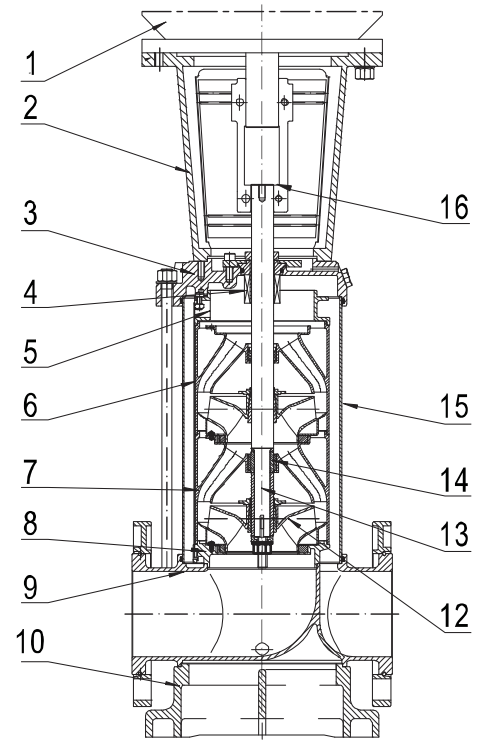
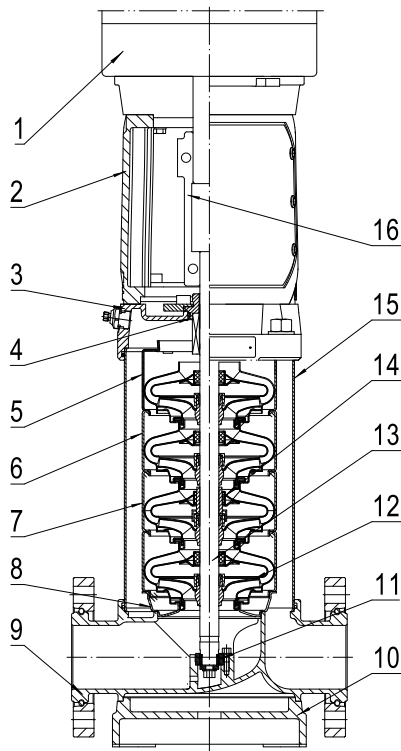
Pos.	Name	Material	AISI / ASTM	AISI / ASTM
1	Motor			
2	Motor Stool	Cast iron	ASTM25B	ASTM25B
3	Pump head	Stainless Steel	AISI304	AISI316L
4	"Cartridge Mechanical Seal"	"Silicon carbide/ Carbon / EPDM"		
	O-rings / Elastomers	EPDM		
5	Top Diffuser	Stainless steel	AISI304	AISI316L
6	Diffuser	Stainless steel	AISI304	AISI316L
7	Support Diffuser	Stainless steel	AISI304	AISI316L
8	Inducer	Stainless steel	AISI304	AISI316L
9	Inlet / Outlet Chamber	Stainless steel	AISI304	AISI316L
10	Base Plate	Cast Aluminium		
11	Bottom bearing	Tungsten carbide		
12	Impeller	Stainless steel	AISI304	AISI316L
13	Shaft	Stainless steel	AISI316L	AISI316L
14	Intermediate bearing	Tungsten carbide		
15	Pump Sleeve	Stainless steel	AISI304	AISI316L
16	Coupling	Carbon steel		
	Coupling Guards	"Injection Moulded Plastic"		
	Neck Rings	Teflon		

VM 10,15,20 MATERIAL LIST

Pos.	Name	Material	AISI / ASTM	AISI / ASTM
1	Motor			
2	Motor Stool	Cast iron	ASTM25B	ASTM25B
3	Pump head	Stainless steel	AISI304	AISI316L
4	"Cartridge Mechanical Seal"	"Silicon carbide/ Carbon / EPDM"		
	O-rings / Elastomers	EPDM		
5	Top Diffuser	Stainless steel	AISI304	AISI316L
6	Diffuser	Stainless steel	AISI304	AISI316L
7	Support Diffuser	Stainless steel	AISI304	AISI316L
8	Inducer	Stainless steel	AISI304	AISI316L
9	Inlet / Outlet Chamber	Stainless steel	AISI304	AISI316L
10	Base Plate	Cast Aluminium		
11	Bottom bearing	Tungsten carbide		
12	Impeller	Stainless steel	AISI304	AISI316L
13	Shaft	Stainless steel	AISI316L	AISI316L
14	Intermediate bearing	Tungsten carbide		
15	Pump Sleeve	Stainless steel	AISI304	AISI316L
16	Coupling	Carbon steel		
	Coupling Guards	"Injection Moulded Plastic"		
	Neck Rings	Teflon		

**NOTE:**

Pumps constructed with all AISI316L wetted parts are available on request  
 Cartridge types shaft seals in different materials available on request.  
 Different flange types are available on request



**VM 32, 42, 65, 90 MATERIAL LIST**

Pos.	Name	Material	AISI / ASTM	AISI / ASTM
1	Motor			
2	Motor Stool	Cast iron	ASTM25B	ASTM25B
3	Pump head	Cast iron	AISI304	AISI316L
4	"Cartridge Mechanical Seal"	"Silicon carbide/ Carbon / EPDM"		
	O-rings / Elastomers	EPDM		
5	Top Diffuser	Stainless steel	AISI304	AISI316L
6	Diffuser	Stainless steel	AISI304	AISI316L
7	Support Diffuser	Stainless steel	AISI304	AISI316L
8	Inducer	Stainless steel	AISI304	AISI316L
9	Inlet / Outlet Chamber	Stainless steel	AISI304	AISI316L
10	Base Plate	Cast Iron	ASTM25B	ASTM25B
11	Bottom bearing	Tungsten carbide		
12	Impeller	Stainless steel	AISI304	AISI316L
13	Shaft	Stainless steel	AISI316L	AISI316L
14	Intermediate bearing	Tungsten carbide		
15	Pump Sleeve	Stainless steel	AISI304	AISI316L
16	Coupling	Carbon steel		
	Coupling Guards	Stainless Steel	AISI304	AISI316L
	Neck Rings	Teflon		

**VM 120, 150, 200 MATERIAL LIST**

Pos.	Name	Material	AISI / ASTM	AISI / ASTM
1	Motor			
2	Motor Stool	Cast iron	ASTM25B	ASTM25B
3	Pump head	Cast iron	AISI304	AISI316L
4	"Cartridge Mechanical Seal"	"Silicon carbide/ Carbon / EPDM"		
	O-rings / Elastomers	EPDM		
5	Top Diffuser	Stainless steel	AISI304	AISI316L
6	Diffuser	Stainless steel	AISI304	AISI316L
7	Support Diffuser	Stainless steel	AISI304	AISI316L
8	Inducer	Stainless steel	AISI304	AISI316L
9	Inlet / Outlet Chamber	Stainless steel	AISI304	AISI316L
10	Base Plate	Cast Iron	ASTM25B	ASTM25B
11	Bottom bearing	Tungsten carbide		
12	Impeller	Stainless steel	AISI304	AISI316L
13	Shaft	Stainless steel	AISI316L	AISI316L
14	Intermediate bearing	Tungsten carbide		
15	Pump Sleeve	Stainless steel	AISI304	AISI316L
16	Coupling	Carbon steel		
	Coupling Guards	Stainless Steel	AISI304	AISI316L
	Neck Rings	Teflon		

**NOTE:**

Pumps constructed with all AISI316L wetted parts are available on request  
 Cartridge types shaft seals in different materials available on request.  
 Different flange types are available on request

# Vertical Multistage Pumps

ELECTRICAL DATA	
Maximum ambient temperature	- Single phase - Three phase
	45°C 40°C
Minimum IP rating	IP55
Insulation class	Class F

OPERATING LIMITS	
Capacities to	240m <sup>3</sup> /hr
Pressure heads to	230m
Maximum discharge pressure	PN25 255m
Maximum suction pressure	Refer to table below
Temperature range	-15° to +120°C
Motor - three phase*	400V ± 10%
Motor - single phase**	up to 2.2kW
	230V ± 10%
	3.0 to 4.0kW
	240/480V ± 10%
Single phase up to 1.5kw 240V motor supplied with Aust. standard plug	
Rotation	Anti-clockwise (top view)

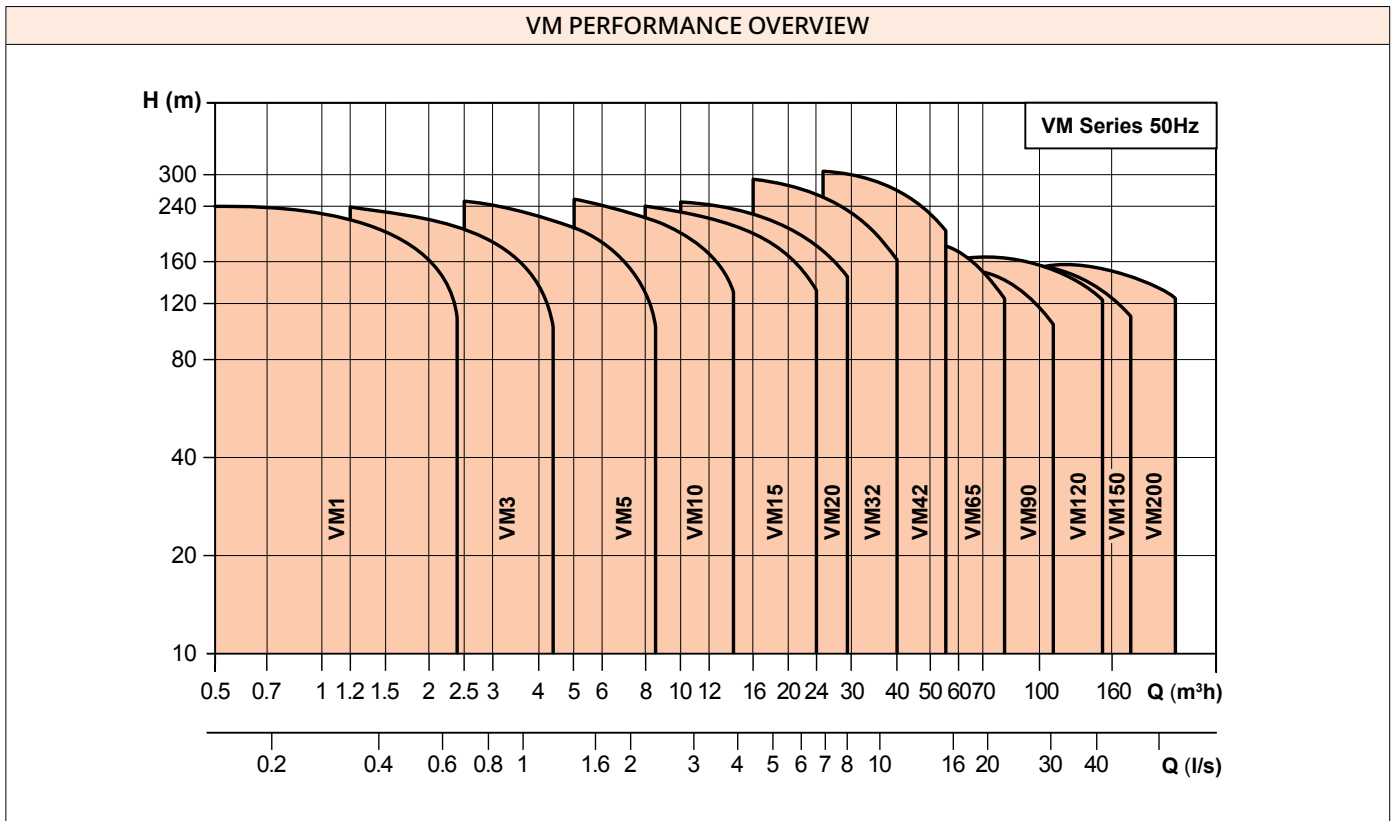
\*Other voltages on request

ALTITUDE & TEMPERATURE VS LOSS OF HEAD			
Guide only – altitude and temperature losses are added.			
Altitude	Loss of head	Temperature	Loss of head
0m	0m	20°C	0.20m
500m	0.60m	30°C	0.40m
1000m	1.15m	40°C	0.70m
1500m	1.70m	50°C	1.20m
2000m	2.20m	60°C	1.90m
2500m	2.65m	70°C	3.10m
3000m	3.20m	80°C	4.70m
		90°C	7.10m
		100°C	10.30m

**NOTE: 304 stainless steel**, (Z6 CN 18.9) and **316L stainless steel** (Z2 CND 17.12) are recommended materials that are highly resistant to corrosion. Suitable for pumping clean, clear non-viscous liquids, containing no fibres or solids. Maximum sand/silica concentration 40 g/m<sup>3</sup>.

IDENTIFICATION OF THE PUMP	
<p><b>VM 32 - 2AM3</b></p> <ul style="list-style-type: none"> <li>Motor fitted</li> <li>Blank = Single phase</li> <li>M3 = Three phase</li> <li>ML = Liquid end</li> <li>Impeller variation (A = turndown)</li> <li>Number of stages</li> <li>Nominal capacity at BEP in m<sup>3</sup>/hr</li> <li>VM Series Vertical Multistage Stainless Steel Pump</li> </ul>	<p><b>VM 20 - 5M3 - 316</b></p> <ul style="list-style-type: none"> <li>316L stainless steel</li> <li>Motor fitted</li> <li>Blank = Single phase</li> <li>M3 = Three phase</li> <li>ML = Liquid end</li> <li>Number of stages</li> <li>Nominal capacity at BEP in m<sup>3</sup>/hr</li> <li>VM Series Vertical Multistage Stainless Steel Pump</li> </ul>

TECHNICAL DATA													
Description	VM1	VM3	VM5	VM10	VM15	VM20	VM32	VM42	VM65	VM90	VM120	VM150	VM200
Flow rate (m <sup>3</sup> /hr)	1	3	5	10	15	20	32	42	65	90	120	150	200
Flow rate (l/sec)	0.28	0.83	1.39	2.78	4.17	5.56	8.89	11.67	18.06	23.61	33.33	41.67	55.56
Flow range (m <sup>3</sup> /hr)	0.5 to 2.4	1.2 to 4.4	2.5 to 8.5	5 to 14	8 to 24	10 to 29	16 to 40	25 to 55	30 to 80	50 to 110	60 to 150	80 to 180	100 to 240
Flow range (l/sec)	0.14 - 0.67	0.33 - 1.22	0.69 - 2.36	1.39 - 3.89	2.22 - 6.67	2.78 - 8.06	4.44 - 11.11	6.94 - 15.28	8.33 - 22.22	13.89 - 30.56	16.67 - 41.67	22.22 - 50	27.78 - 66.67
Max. pressure (bar)	22	23	24	24	22	25	29	30	22	17	16	16	16
Motor power (kW)	0.37 to 2.2	0.37 to 3	0.37 to 5.5	0.75 to 11	1.1 to 15	1.1 to 18.5	1.5 to 30	3 to 45	4 to 45	5.5 to 45	11 to 75	11 to 75	18.5 to 110
Temperature (°C)	-15~+120												
Max. efficiency (%)	48	58	70	72	73	73	73	75	76	77	74	73	79
DIN flange	DN25	DN25	DN32	DN40	DN50	DN50	DN65	DN80	DN100	DN100	DN125	DN125	DN150



MOTOR TECHNICAL SPECIFICATIONS – SINGLE PHASE										
Motor 1Ø	Part Number	Frame	IP Rating	FLC 240V	Start/LRC Ratio	RPM	Eff %	Sound db(A), under load	Bearings	
									Drive End	Non-D/End
0.55	48232	71 V18	IP55	3.25	5.62	2828	70	54	6202-ZZ	6202-ZZ
0.75	400645	80 V18	IP55	4.38	5.83	2815	72	52	6204-ZZ	6204-ZZ
1.1	401357	80 V18	IP55	6.38	5.65	2830	75	52	6204-ZZ	6204-ZZ
1.5	401358	90 V18	IP55	8.08	5.57	2850	76	58	6305-ZZ	6305-ZZ
2.2	401359	90 V18	IP55	12.0	4.59	2830	77	58	6305-ZZ	6305-ZZ
3.0	48237	100 V18	IP55	18.0*	5.0	2870	81	64	6206-ZZ	6203-ZZ
4.0	48238	112 V18	IP55	22.0*	6.4	2910	84	67	6207-ZZ	6206-ZZ

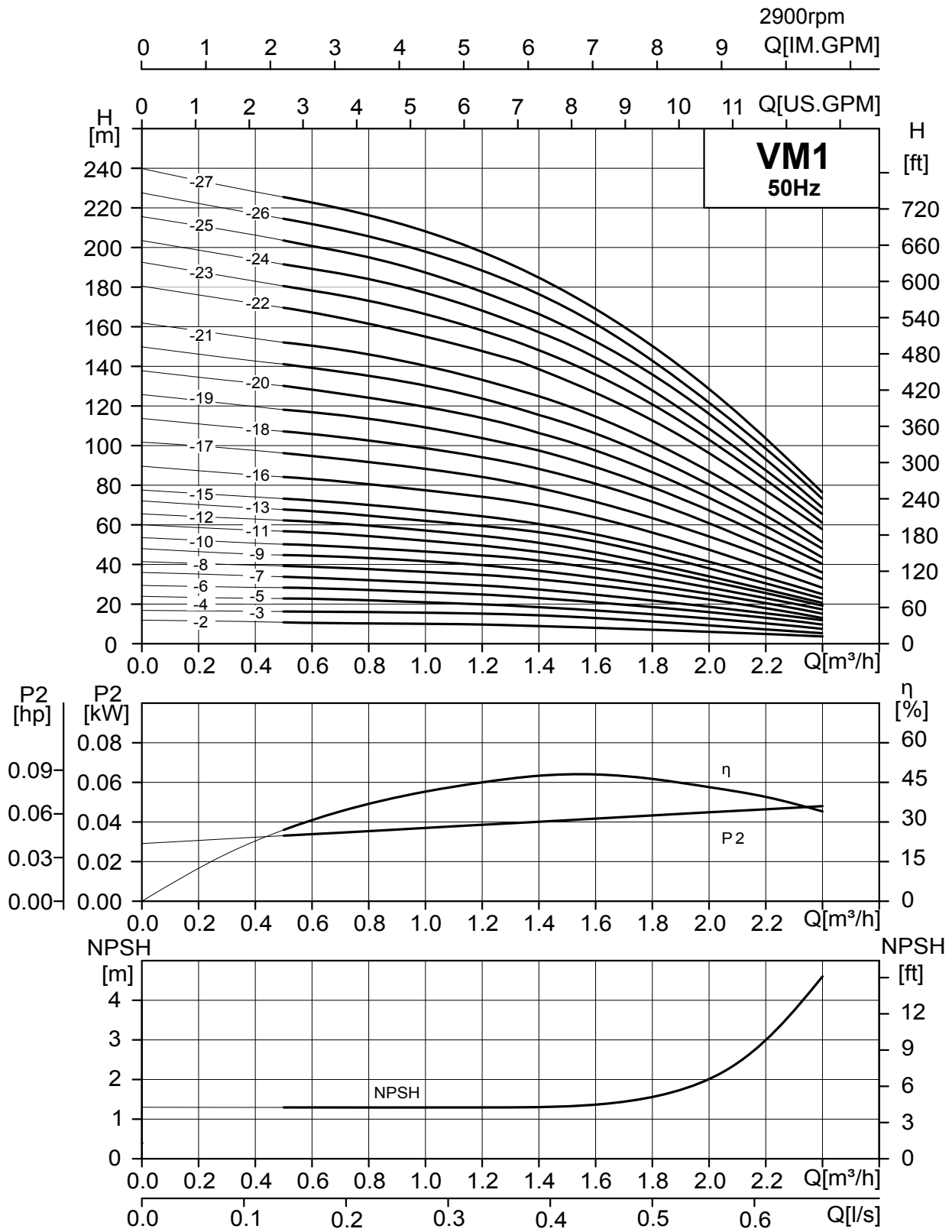
\*For 480V single phase operation multiply by 0.5.

MOTOR TECHNICAL SPECIFICATIONS – THREE PHASE										
Motor 3Ø	Part Number	Frame	IP Rating	FLC 240V	Start/LRC Ratio	RPM	Eff %	Sound db(A), under load	Bearings	
									Drive End	Non-D/End
0.75	400603	80 V18	IP55	1.52	7.0	2842	80.8	52	6204ZZ	6204ZZ
1.1	400604	80 V18	IP55	2.2	6.2	2828	82.4	52	6204ZZ	6204ZZ
1.5	400605	90 V18	IP55	3.1	5.3	2800	78.0	58	6305ZZ	6205ZZ
2.2	400606	90 V18	IP55	4.2	6.7	2800	85.0	58	6305ZZ	6205ZZ
3	400607	100 V18	IP55	5.7	6.8	2853	86.2	64	6306ZZ	6206ZZ
4	400608	112 V18*	IP55	7.3	6.7	2902	86.8	67	6306ZZ	6306ZZ
5.5	400609	132 V18*	IP55	9.8	7.4	2916	89.9	69	6308ZZ	6308ZZ
7.5	400610	132 V18*	IP55	13.3	7.4	2892	87.0	69	6308ZZ	6308ZZ
11.0	400611	160 V1*	IP55	19.4	7.9	2925	88.3	71	7309B	6309ZZ
15.0	400612	160 V1*	IP55	25.5	8.4	2931	89.3	71	7309B	6309ZZ
18.5	400613	160 V1*	IP55	31.3	8.3	2938	91.4	71	7309B	6309ZZ
22.0	400614	180 V1*	IP55	36.8	7.7	2951	90.4	70	6311-C3	6211-C3
30.0	400615	200 V1*	IP55	49.4	7.9	2950	91.4	74	6312-C3	6212-C3
37.0	49485-1	200 V1*	IP55	60.9	7.6	2950	92.1	74	6312-C3	6212-C3
45.0	49486-1	225 V1*	IP55	74.8	7.8	2962	92.6	82	6314-C3	6314-C3

\* Special motor bearings fitted for thrust management

# Vertical Multistage Pumps

VM1 HYDRAULIC PERFORMANCE

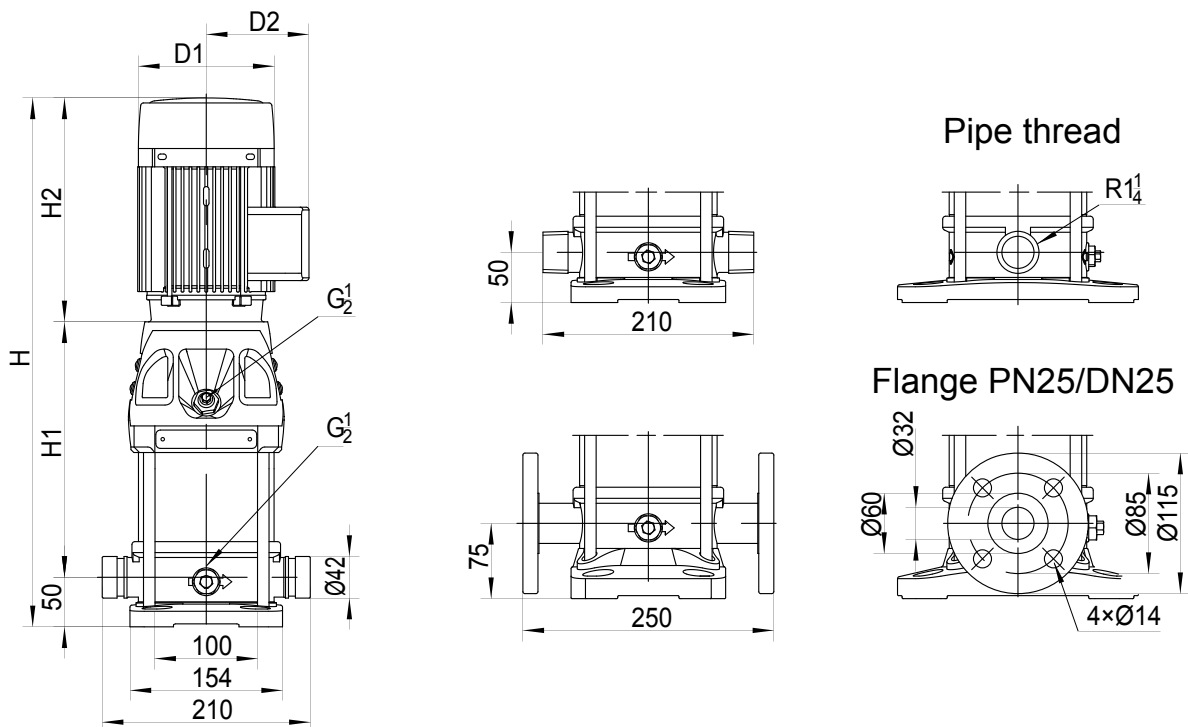


Note: Curve tolerance in conformity with AS9906-2018, appendix 2B.



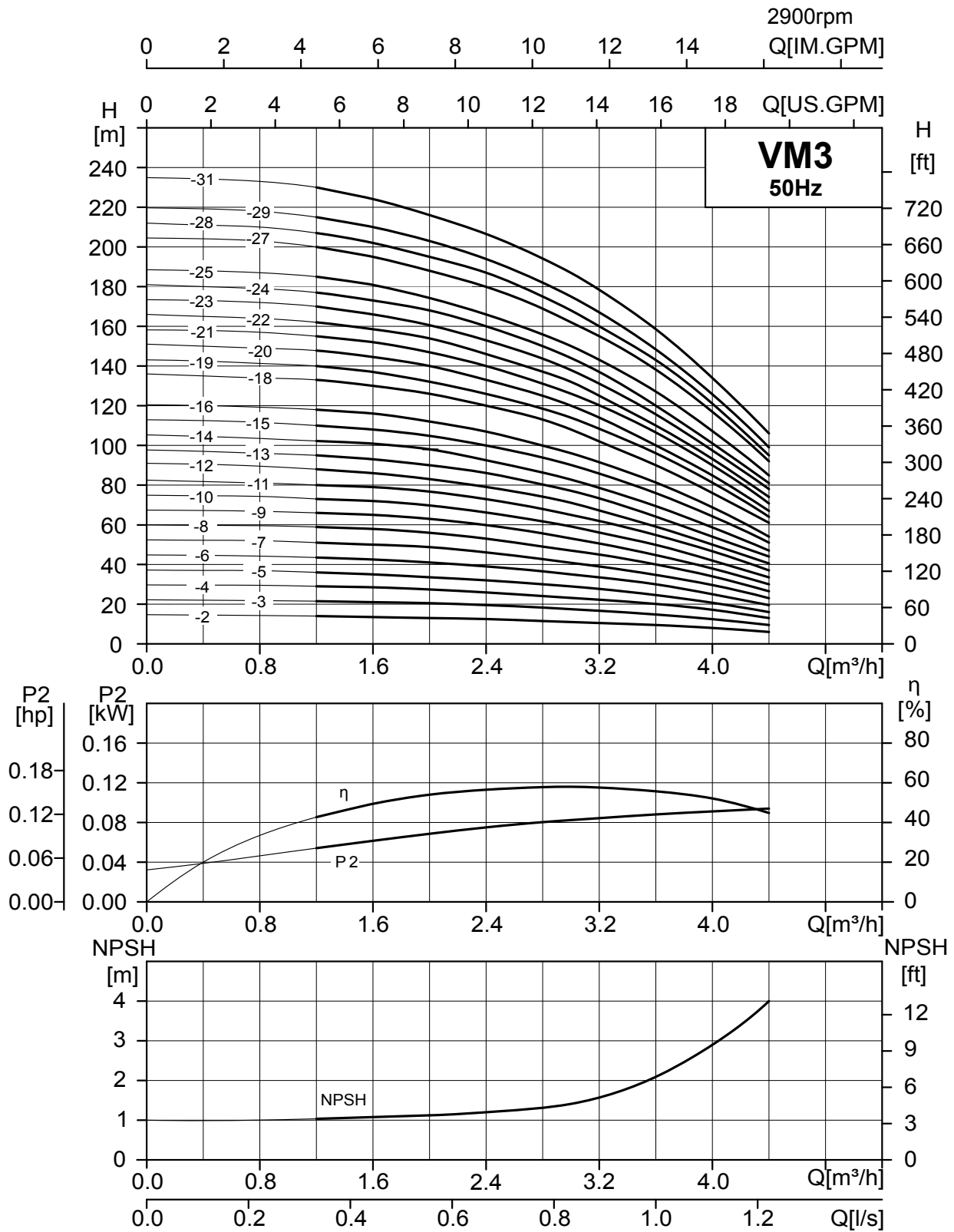
VM1 PERFORMANCE OVERVIEW & DIMENSIONS											
Model	Motor kW	Max Motor Amps		Dimensions**					Flange Data*		Weight kg
		1Ø	3Ø	H1	H2	H	DI	D2	Size	Rating	
VM1-2	0.37	2.23	0.96	262	220	457	140	103	DN25	PN25	19
VM1-3	0.37	2.23	0.96	282	220	477	140	103	DN25	PN25	19
VM1-4	0.37	2.23	0.96	302	220	497	140	103	DN25	PN25	20
VM1-5	0.37	2.23	0.96	322	220	517	140	103	DN25	PN25	20
VM1-6	0.37	2.23	0.96	342	220	537	140	103	DN25	PN25	21
VM1-7	0.37	2.23	0.96	362	220	557	140	103	DN25	PN25	21
VM1-8	0.55	3.21	1.18	382	220	577	140	103	DN25	PN25	23
VM1-9	0.55	3.21	1.18	402	220	597	140	103	DN25	PN25	23
VM1-10	0.55	3.21	1.18	422	220	617	140	103	DN25	PN25	24
VM1-11	0.55	3.21	1.18	442	220	637	140	117	DN25	PN25	24
VM1-12	0.75	4.38	1.56	472	250	697	148	108	DN25	PN25	27
VM1-13	0.75	4.38	1.56	492	250	717	148	108	DN25	PN25	27
VM1-15	0.75	4.38	1.56	532	250	757	148	108	DN25	PN25	28
VM1-17	1.1	6.38	2.24	572	250	797	148	108	DN25	PN25	31
VM1-19	1.1	6.38	2.24	612	250	837	148	108	DN25	PN25	32
VM1-21	1.5	8.08	3.18	652	250	877	148	108	DN25	PN25	32
VM1-22	1.5	8.08	3.18	672	250	897	148	108	DN25	PN25	33
VM1-23	1.5	8.08	3.18	702	293	970	172	120	DN25	PN25	39
VM1-25	1.5	8.08	3.18	742	293	1010	172	120	DN25	PN25	40
VM1-27	1.5	8.08	3.18	782	293	1050	172	120	DN25	PN25	41
VM1-30	1.5	8.08	3.18	842	293	1110	172	120	DN25	PN25	42
VM1-32	2.2	12.00	4.39	882	293	1170	172	120	DN25	PN25	45
VM1-33	2.2	12.00	4.39	902	293	1190	172	120	DN25	PN25	45
VM1-34	2.2	12.00	4.39	922	293	1230	172	120	DN25	PN25	46
VM1-36	2.2	12.00	4.39	962	293	1270	172	120	DN25	PN25	47
VM1-38	2.2	12.00	4.39	1002	293	1310	172	120	DN25	PN25	47
VM1-40	2.2	12.00	4.39	1042	293	1335	172	120	DN25	PN25	48

\* Counter flange tapping is 1 1/4" BSP (F). Supplied complete with bolts, nuts, washers and gaskets.  
 \*\* The overall dimensions of the single phase motor and explosion proof motors are a little different.  
 480v single phase version also available POA.



# Vertical Multistage Pumps

## VM3 HYDRAULIC PERFORMANCE

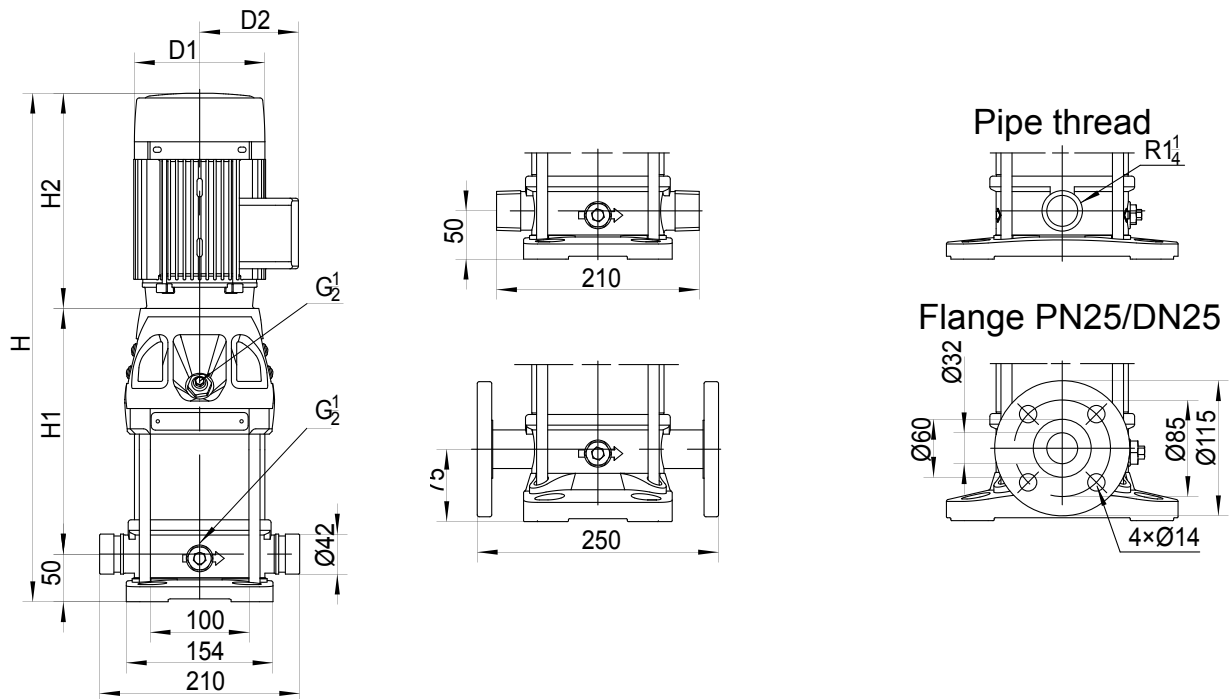


Note: Curve tolerance in conformity with AS9906-2018, appendix 2B.

## VM3 PERFORMANCE OVERVIEW & DIMENSIONS

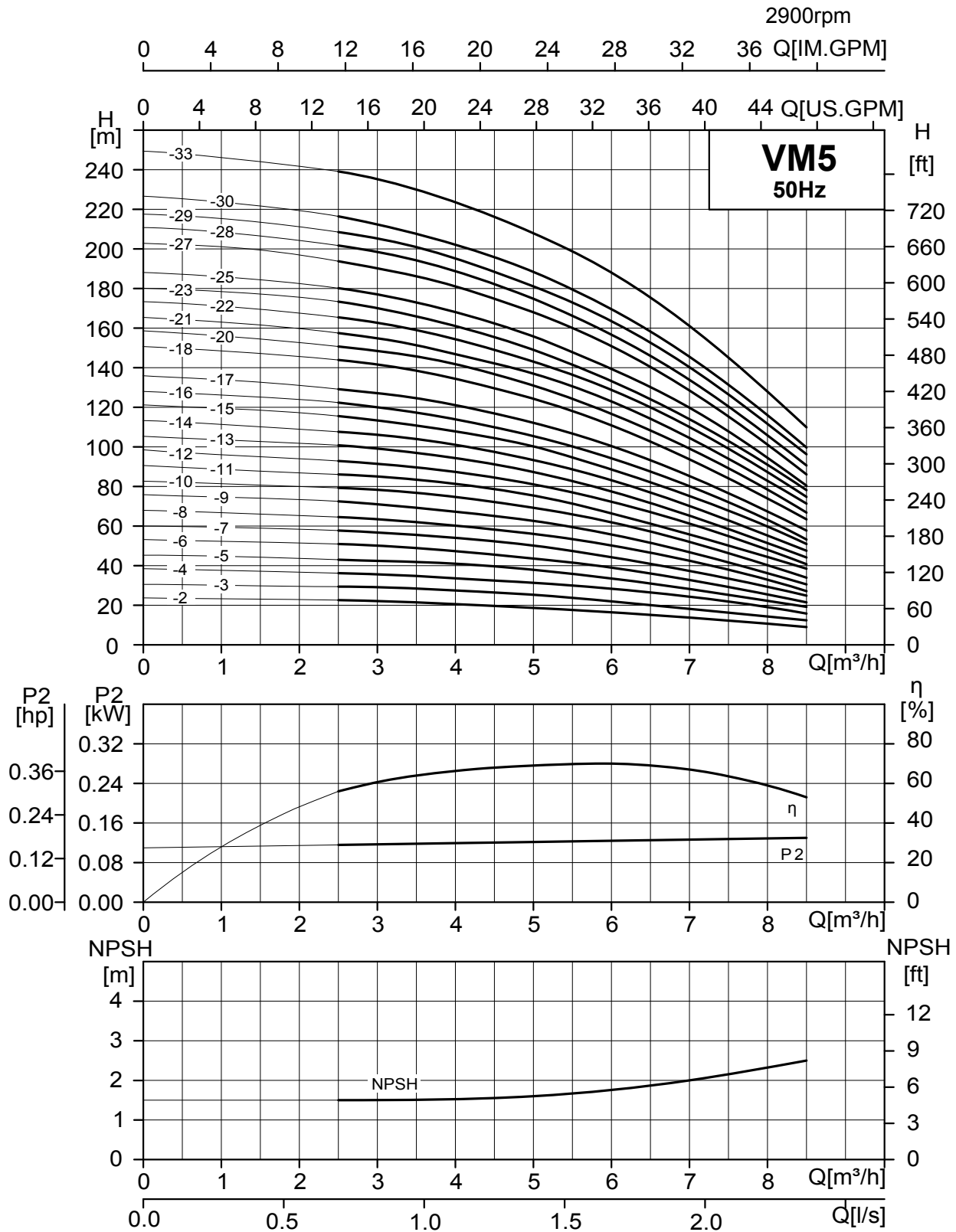
Model	Motor kW	Max Motor Amps		Dimensions**					Flange Data*		Weight kg
		1Ø	3Ø	H1	H2	H	DI	D2	Size	Rating	
VM3-2	0.37	2.23		187	220	457	140	103	DN25	PN25	20
VM3-3	0.37	2.23		207	220	477	140	103	DN25	PN25	20
VM3-4	0.37	2.23		227	220	497	140	103	DN25	PN25	21
VM3-5	0.55	3.21	1.23	247	220	517	140	103	DN25	PN25	22
VM3-6	0.55	3.21	1.23	267	220	537	140	103	DN25	PN25	23
VM3-7	0.75	4.38	1.7	297	250	597	148	108	DN25	PN25	26
VM3-8	0.75	4.38	1.7	317	250	617	148	108	DN25	PN25	26
VM3-9	1.1	6.38	2.3	337	250	637	148	108	DN25	PN25	28
VM3-10	1.1	6.38	2.3	357	250	657	148	108	DN25	PN25	29
VM3-11	1.1	6.38	2.3	377	250	677	148	108	DN25	PN25	29
VM3-12	1.1	6.38	2.3	397	250	697	148	108	DN25	PN25	30
VM3-13	1.5	8.08	3.21	427	293	770	172	120	DN25	PN25	35
VM3-14	1.5	8.08	3.21	447	293	790	172	120	DN25	PN25	36
VM3-15	1.5	8.08	3.21	467	293	810	172	120	DN25	PN25	36
VM3-16	1.5	8.08	3.21	487	293	830	172	120	DN25	PN25	37
VM3-18	2.2	12.00	4.38	527	293	870	172	120	DN25	PN25	39
VM3-19	2.2	12.00	4.38	547	293	890	172	120	DN25	PN25	40
VM3-20	2.2	12.00	4.38	567	293	910	172	120	DN25	PN25	40
VM3-21	2.2	12.00	4.38	587	293	930	172	120	DN25	PN25	41
VM3-22	2.2	12.00	4.38	607	293	950	172	120	DN25	PN25	41
VM3-23	2.2	12.00	4.38	727	293	970	172	120	DN25	PN25	42
VM3-24	2.2	12.00	4.38	647	293	990	172	120	DN25	PN25	42
VM3-25	3		5.77	677	345	1072	197	312	DN25	PN25	53
VM3-27	3		5.77	717	345	1112	197	132	DN25	PN25	54
VM3-28	3		5.77	737	345	1132	197	132	DN25	PN25	54
VM3-29	3		5.77	757	345	1152	197	132	DN25	PN25	54
VM3-31	3		5.77	797	345	1192	197	132	DN25	PN25	55

\* Counter flange tapping is 1 1/4" BSP (F). Supplied complete with bolts, nuts, washers and gaskets.  
 \*\* The overall dimensions of the single phase motor and explosion proof motors are a little different.  
 480v single phase version also available POA.



# Vertical Multistage Pumps

## VM5 HYDRAULIC PERFORMANCE

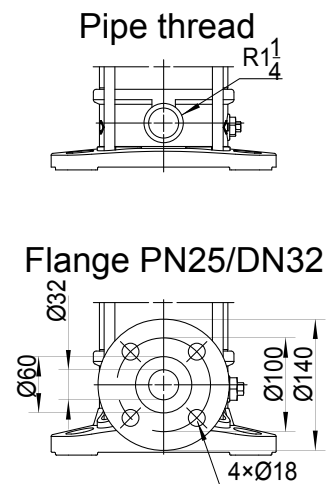
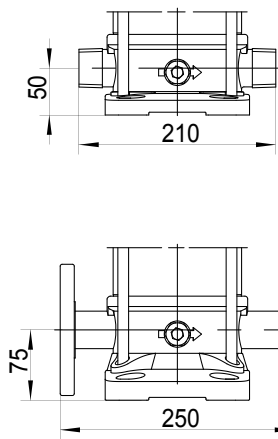
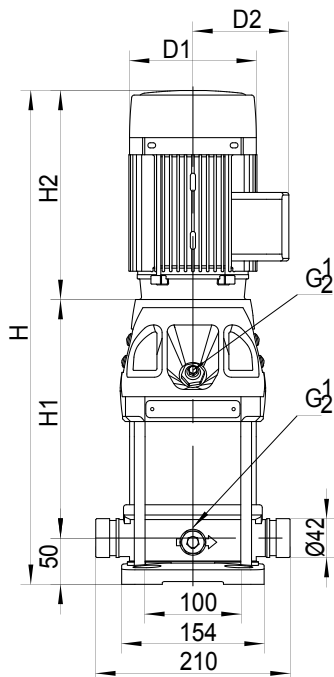


Note: Curve tolerance in conformity with AS9906-2018, appendix 2B.

VM5 PERFORMANCE OVERVIEW & DIMENSIONS											
Model	Motor kW	Max Motor Amps		Dimensions**					Flange Data*		Weight kg
		1Ø	3Ø	H1	H2	H	DI	D2	Size	Rating	
VM5-2	0.37	2.23		201	220	471	140	103	DN32	PN25	19
VM5-3	0.55	4.38	1.23	228	220	498	140	103	DN32	PN25	21
VM5-4	0.55	4.38	1.23	255	200	525	140	103	DN32	PN25	22
VM5-5	0.75	4.38	1.7	292	250	592	148	108	DN32	PN25	25
VM5-6	1.1	6.38	2.3	319	250	619	148	108	DN32	PN25	27
VM5-7	1.1	6.38	2.3	346	250	646	148	108	DN32	PN25	27
VM5-8	1.1	6.38	2.3	373	250	673	148	108	DN32	PN25	28
VM5-9	1.5	8.08	3.21	410	293	753	172	120	DN32	PN25	33
VM5-10	1.5	8.08	3.21	437	293	780	172	120	DN32	PN25	34
VM5-11	1.5	8.08	3.21	464	293	807	172	120	DN32	PN25	34
VM5-12	2.2	12.00	4.38	491	293	834	172	120	DN32	PN25	37
VM5-13	2.2	12.00	4.38	518	293	861	172	120	DN32	PN25	37
VM5-14	2.2	12.00	4.38	545	293	888	172	120	DN32	PN25	38
VM5-15	2.2	12.00	4.38	572	293	915	172	120	DN32	PN25	38
VM5-16	2.2	12.00	4.38	599	293	942	172	120	DN32	PN25	39
VM5-17	3		5.77	636	345	1031	197	132	DN32	PN25	50
VM5-18	3		5.77	663	345	1058	197	132	DN32	PN25	50
VM5-20	3		5.77	717	345	1112	197	132	DN32	PN25	51
VM5-21	3		5.77	744	345	1139	197	132	DN32	PN25	52
VM5-22	4		7.03	771	348	1169	215	151	DN32	PN25	59
VM5-23	4		7.03	798	348	1196	215	151	DN32	PN25	60
VM5-24	4		7.03	825	348	1223	215	151	DN32	PN25	60
VM5-25	4		7.03	852	348	1250	215	151	DN32	PN25	61
VM5-27	4		7.03	906	348	1304	215	151	DN32	PN25	62
VM5-28	4		7.03	933	348	1331	215	151	DN32	PN25	62
VM5-29	5.5		9.99	1035	390	1475	260	260	DN32	PN25	82
VM5-30	5.5		9.99	1062	390	1502	260	260	DN32	PN25	83
VM5-33	5.5		9.99	1143	390	1583	260	260	DN32	PN25	84

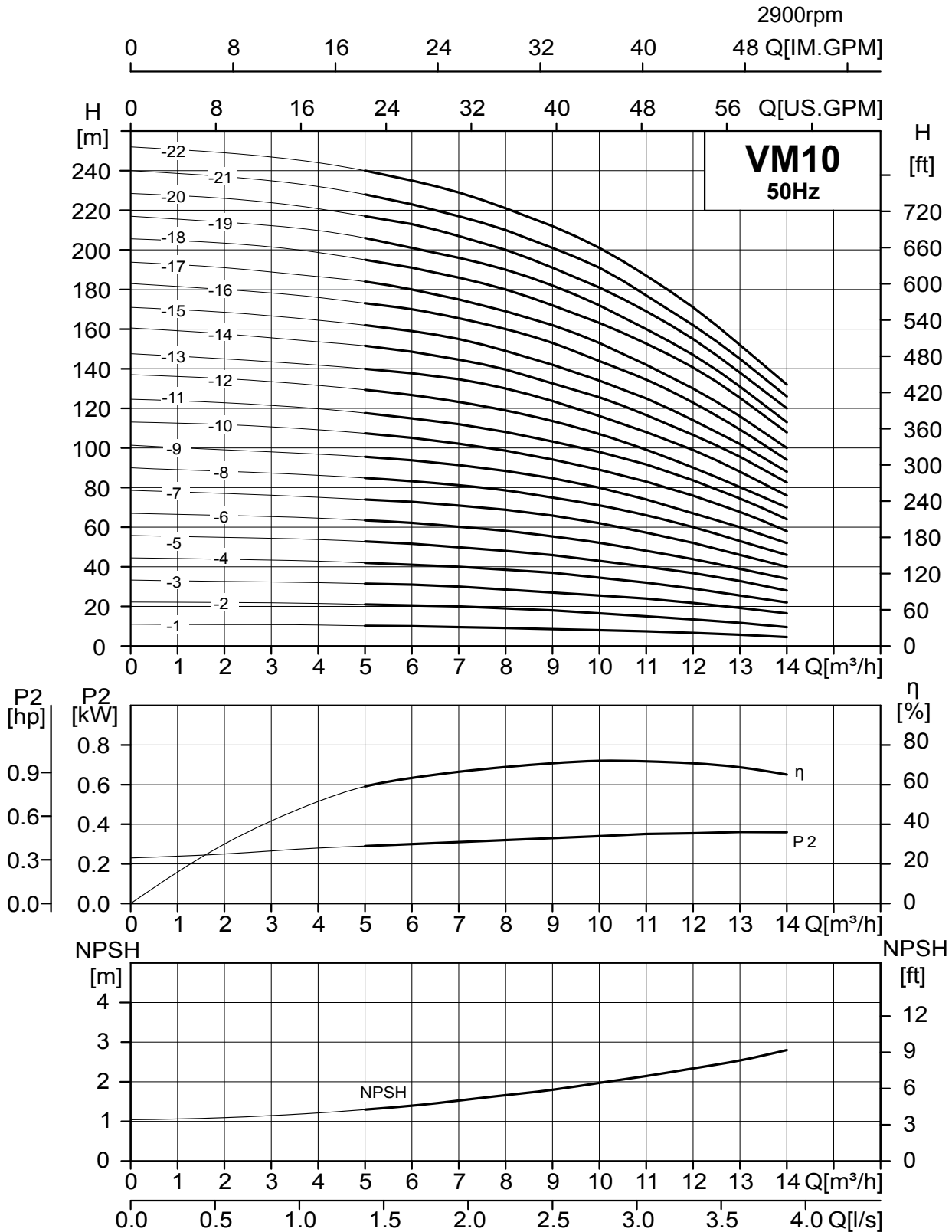
\* Counter flange tapping is 1 1/4" BSP (F). Supplied complete with bolts, nuts, washers and gaskets.

\*\* The overall dimensions of the single phase motor and explosion proof motors are a little different. 480v single phase version also available POA.



# Vertical Multistage Pumps

## VM10 HYDRAULIC PERFORMANCE

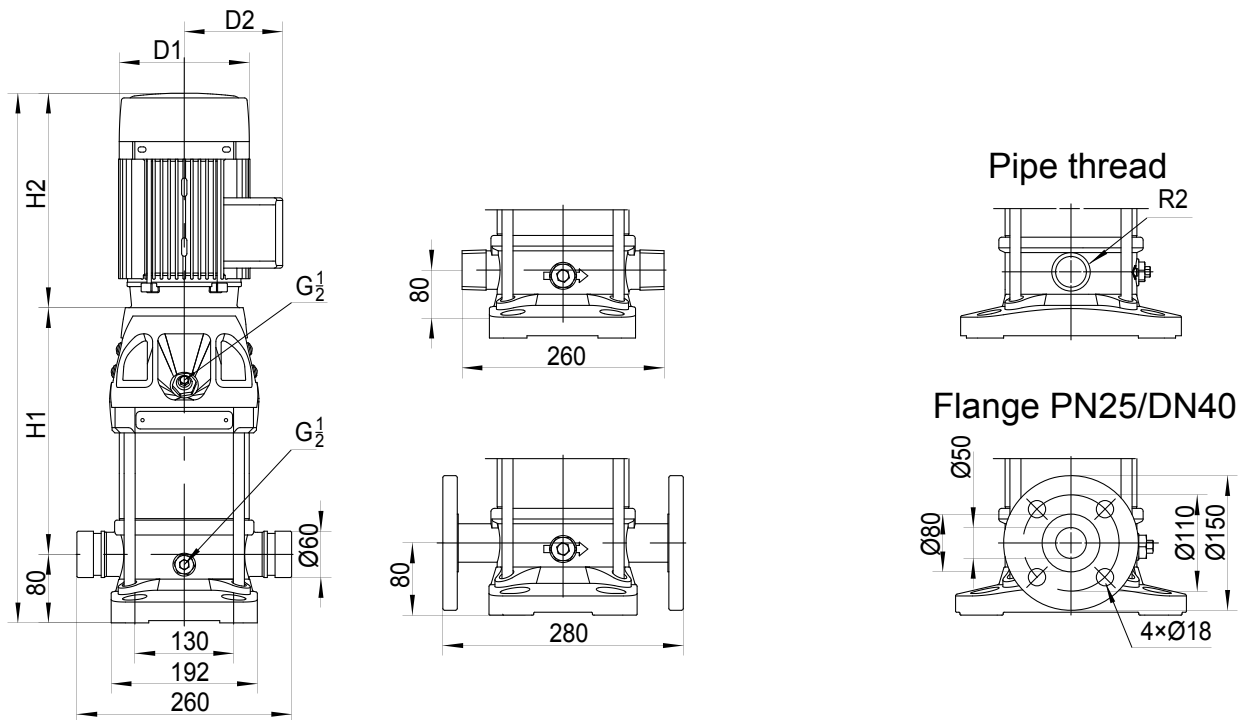


Note: Curve tolerance in conformity with AS9906-2018, appendix 2B.

## VM10 PERFORMANCE OVERVIEW & DIMENSIONS

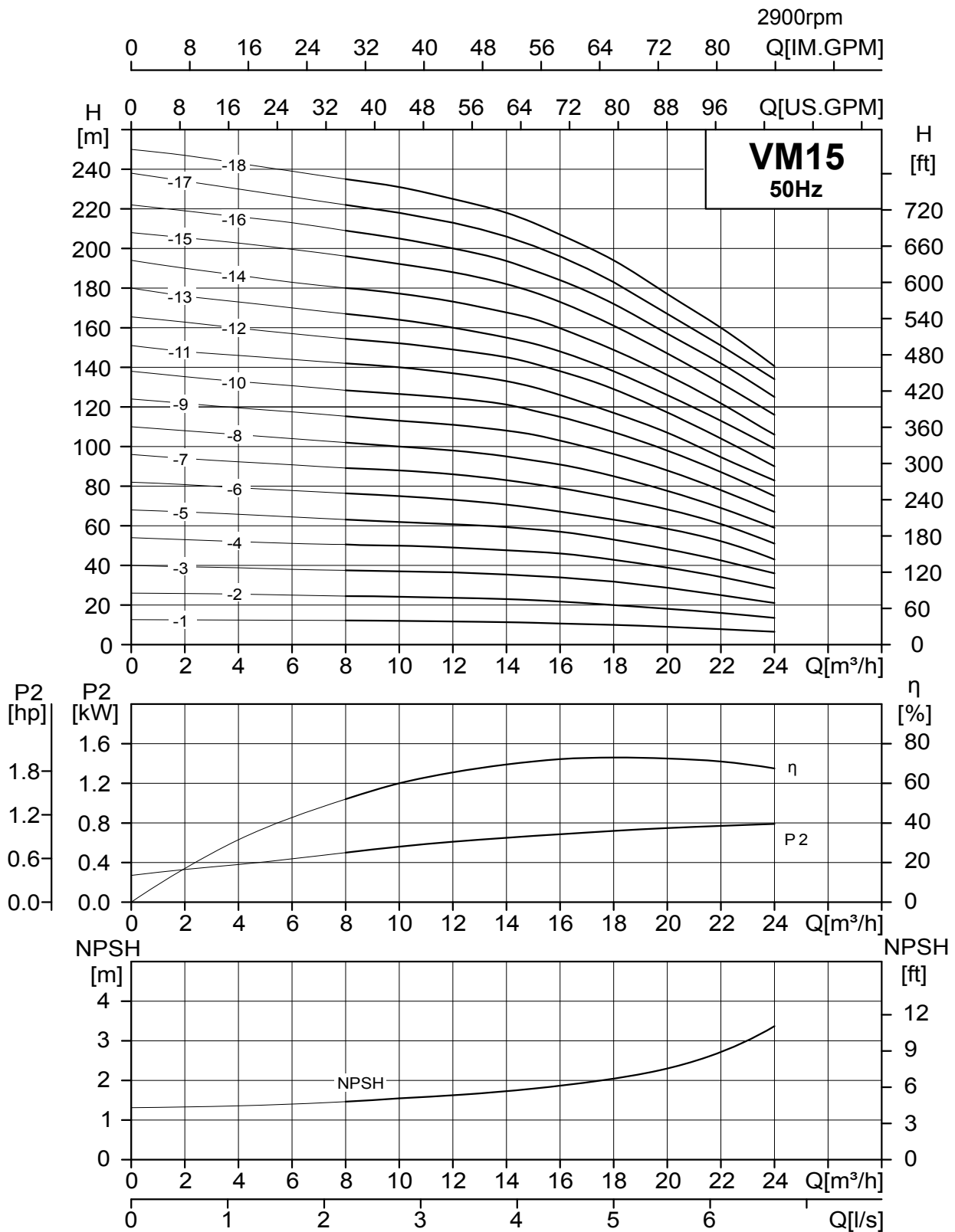
Model	Motor kW	Max Motor Amps		Dimensions**					Flange Data*		Weight kg
		1Ø	3Ø	H1	H2	H	DI	D2	Size	Rating	
VM10-1	0.75	4.38	1.7	267	250	597	148	108	DN40	PN25	29
VM10-2	0.75	4.38	1.7	267	250	597	148	108	DN40	PN25	30
VM10-3	1.1	6.38	2.3	297	250	627	148	108	DN40	PN25	33
VM10-4	1.5	8.08	3.21	337	293	710	172	120	DN40	PN25	39
VM10-5	2.2	12.00	4.38	367	293	740	172	120	DN40	PN25	43
VM10-6	2.2	12.00	4.38	397	293	770	172	120	DN40	PN25	44
VM10-7	3		5.77	437	345	862	197	132	DN40	PN25	55
VM10-8	3		5.77	467	345	892	197	132	DN40	PN25	56
VM10-9	4		7.03	497	348	925	215	151	DN40	PN25	63
VM10-10	4		7.03	527	348	955	215	151	DN40	PN25	64
VM10-11	4		7.03	557	348	985	215	151	DN40	PN25	65
VM10-12	5.5		9.99	587	348	1015	215	151	DN40	PN25	66
VM10-13	5.5		9.99	695	390	1165	260	168	DN40	PN25	86
VM10-14	5.5		9.99	725	390	1195	260	168	DN40	PN25	87
VM10-15	5.5		9.99	755	390	1225	260	168	DN40	PN25	88
VM10-16	7.5		13.21	785	390	1255	260	168	DN40	PN25	97
VM10-17	7.5		13.21	815	390	1285	260	168	DN40	PN25	98
VM10-18	7.5		13.21	845	390	1315	260	168	DN40	PN25	99
VM10-19	7.5		13.21	875	390	1345	260	168	DN40	PN25	100
VM10-20	7.5		13.21	905	390	1375	260	168	DN40	PN25	101
VM10-21	7.5		13.21	935	390	1405	260	168	DN40	PN25	102
VM10-22	11		19.39	995	500	1575	330	205	DN40	PN25	168

\* Counter flange tapping is 1/2" BSP (F). Supplied complete with bolts, nuts, washers and gaskets.  
 \*\* The overall dimensions of the single phase motor and explosion proof motors are a little different.  
 480v single phase version also available POA.



# Vertical Multistage Pumps

## VM5 HYDRAULIC PERFORMANCE



Note: Curve tolerance in conformity with AS9906-2018, appendix 2B.

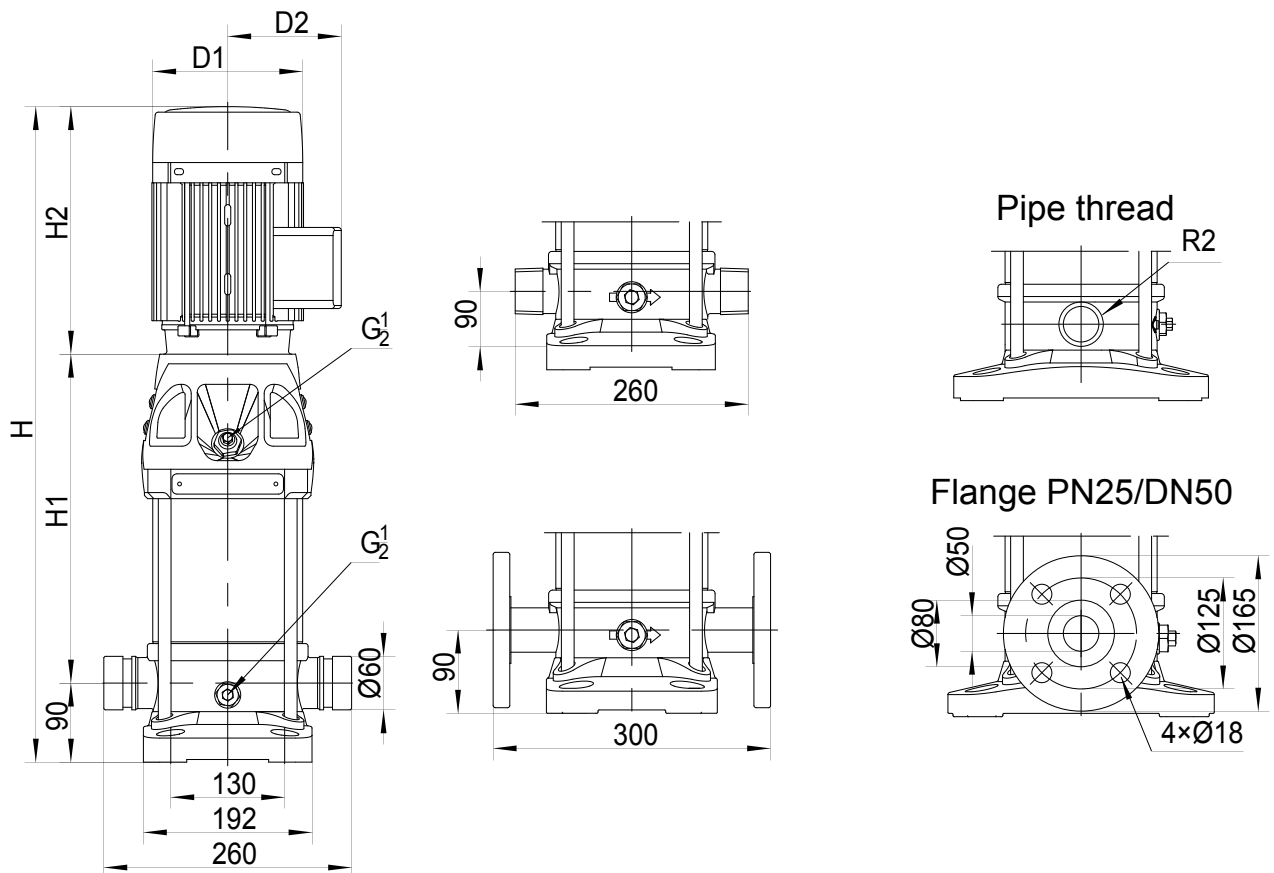


## VM15 PERFORMANCE OVERVIEW & DIMENSIONS

Model	Motor kW	Max Motor Amps		Dimensions**					Flange Data*		Weight kg
		1Ø	3Ø	H1	H2	H	DI	D2	Size	Rating	
VM15-1	1.1	6.38	2.3	297	250	637	148	108	DN50	PN25	33
VM15-2	2.2	12.00	3.21	307	293	690	172	120	DN50	PN25	41
VM15-3	3		5.77	362	345	797	197	132	DN50	PN25	52
VM15-4	4		7.03	407	348	845	215	151	DN50	PN25	59
VM15-5	4		7.03	452	348	890	215	151	DN50	PN25	61
VM15-6	5.5		9.99	575	390	1055	260	168	DN50	PN25	83
VM15-7	5.5		9.99	620	390	1100	260	168	DN50	PN25	84
VM15-8	7.5		13.21	665	390	1145	260	168	DN50	PN25	91
VM15-9	7.5		13.21	710	390	1190	260	168	DN50	PN25	92
VM15-10	11		19.39	785	500	1375	330	205	DN50	PN25	150
VM15-11	11		19.39	830	500	1420	330	205	DN50	PN25	152
VM15-12	11		19.39	875	500	1465	330	205	DN50	PN25	153
VM15-13	11		19.39	920	500	1510	330	205	DN50	PN25	155
VM15-14	11		19.39	965	500	1555	330	205	DN50	PN25	156
VM15-15	15		25.46	1010	500	1600	330	205	DN50	PN25	172
VM15-16	15		25.46	1055	500	1645	330	205	DN50	PN25	174
VM15-17	15		25.46	1100	500	1690	330	205	DN50	PN25	175
VM15-18	15		25.46	1145	500	1735	330	205	DN50	PN25	177

\* Counter flange tapping is 2" BSP (F). Supplied complete with bolts, nuts, washers and gaskets.

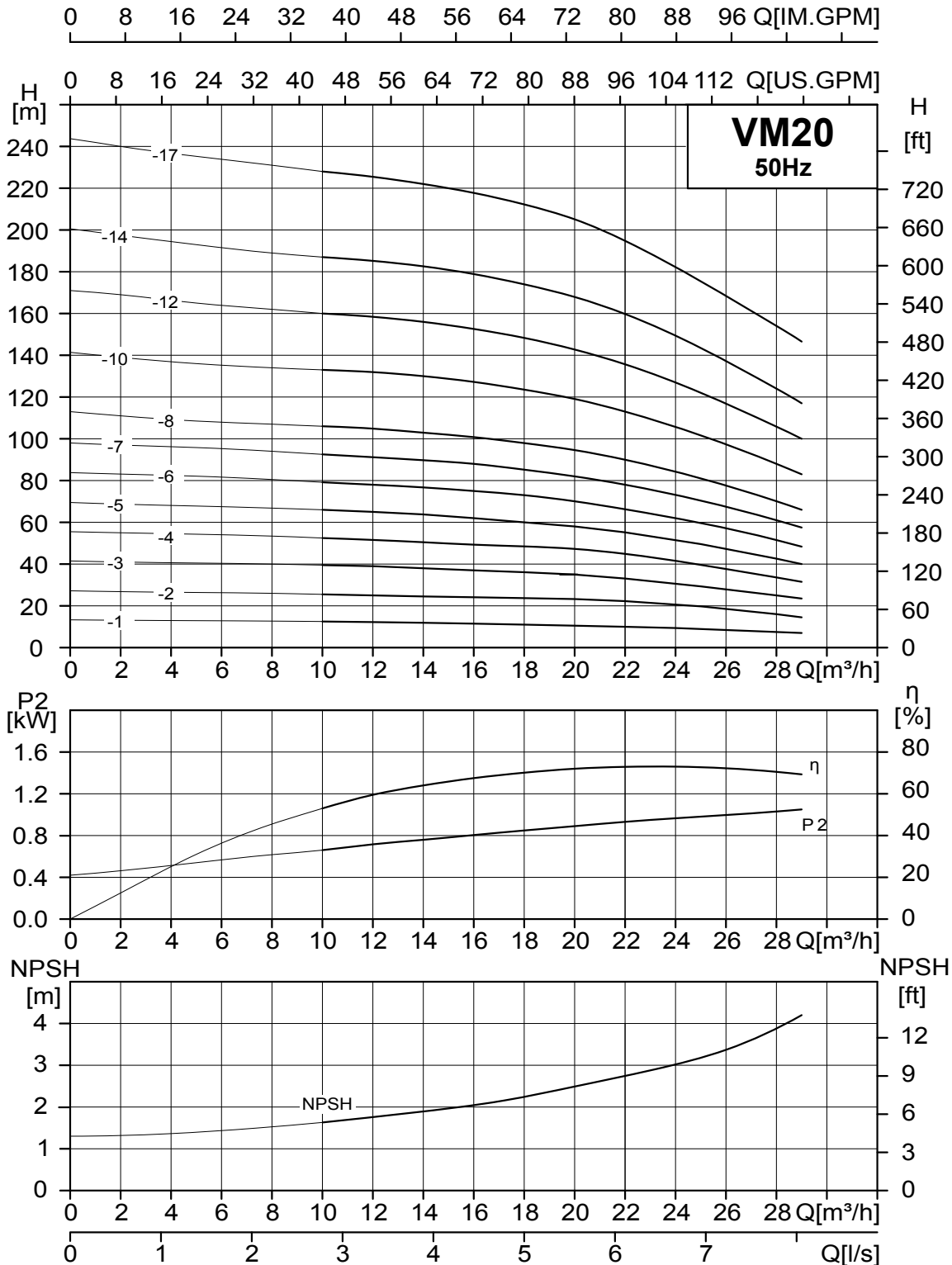
\*\* The overall dimensions of the single phase motor and explosion proof motors are a little different.  
480v single phase version also available POA.



# Vertical Multistage Pumps

## VM0 HYDRAULIC PERFORMANCE

2900rpm



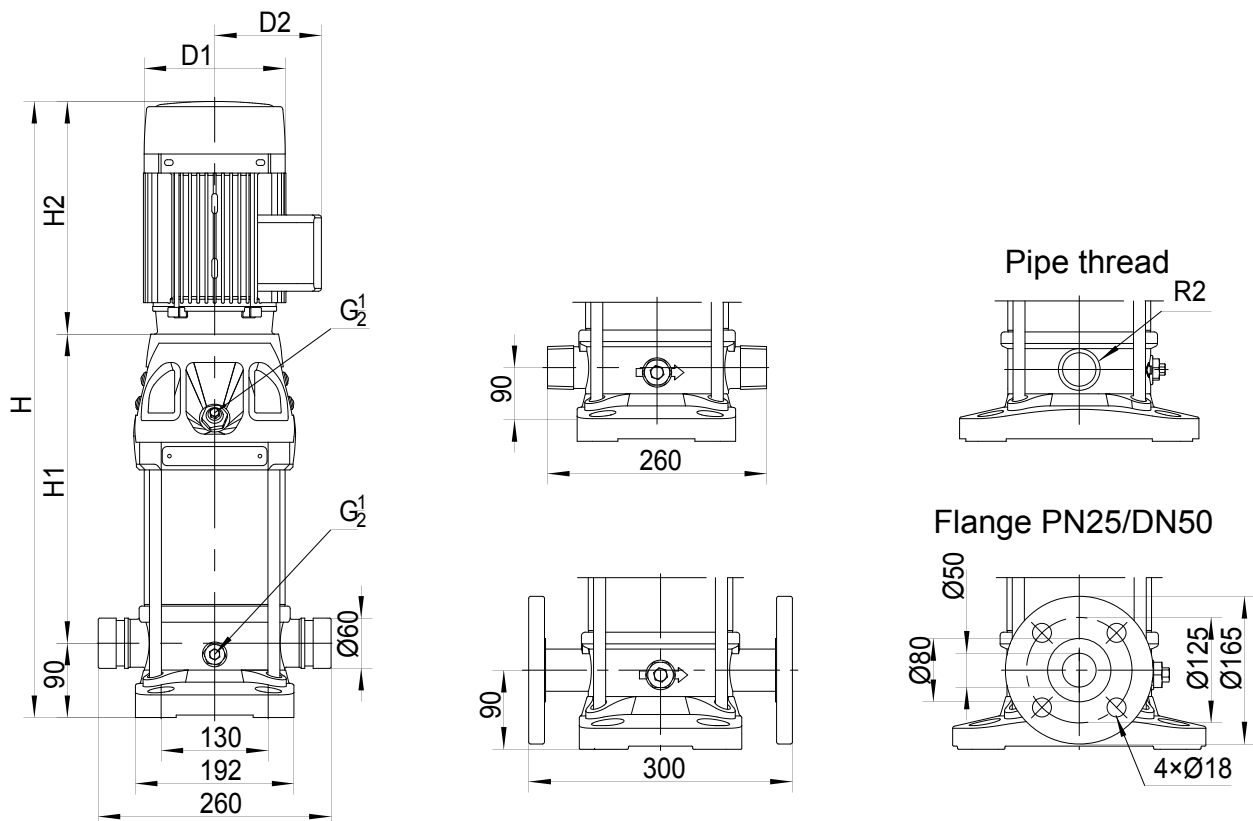
Note: Curve tolerance in conformity with AS9906-2018, appendix 2B.

## VM20 PERFORMANCE OVERVIEW & DIMENSIONS

Model	Motor kW	Max Motor Amps		Dimensions**					Flange Data*		Weight kg
		1Ø	3Ø	H1	H2	H	DI	D2	Size	Rating	
VM20-1	1.1	6.38	2.3	297	250	637	148	108	DN50	PN25	33
VM20-2	2.2	12	4.38	307	293	690	172	120	DN50	PN25	41
VM20-3	4		7.03	362	348	800	215	151	DN50	PN25	59
VM20-4	5.5		9.99	485	390	965	260	168	DN50	PN25	81
VM20-5	5.5		9.99	530	390	1010	260	168	DN50	PN25	83
VM20-6	7.5		13.21	575	390	1055	260	168	DN50	PN25	92
VM20-7	7.5		13.21	620	390	1100	260	168	DN50	PN25	93
VM20-8	11		19.39	695	500	1285	330	205	DN50	PN25	160
VM20-10	11		19.39	785	500	1375	330	205	DN50	PN25	163
VM20-12	15		25.46	875	500	1465	330	205	DN50	PN25	181
VM20-14	15		25.46	965	500	1555	330	205	DN50	PN25	184
VM20-17	18.5		31.29	1100	545	1735	330	205	DN50	PN25	205

\* Counter flange tapping is 2" BSP (F). Supplied complete with bolts, nuts, washers and gaskets.

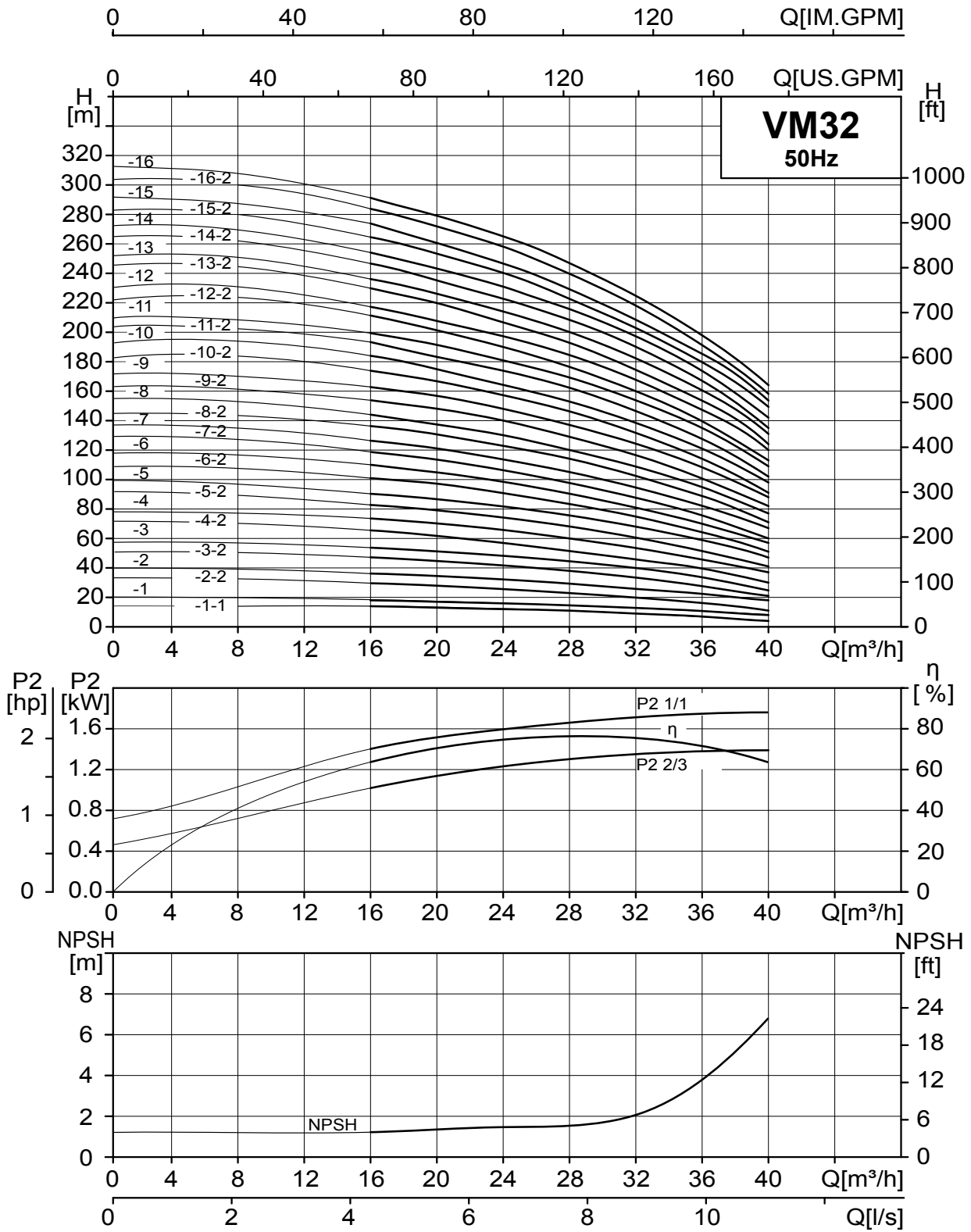
\*\* The overall dimensions of the single phase motor and explosion proof motors are a little different.  
480v single phase version also available POA.



# Vertical Multistage Pumps

VM32 HYDRAULIC PERFORMANCE

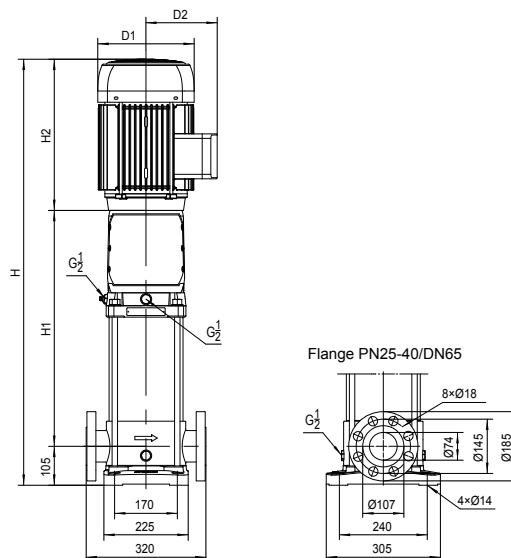
2900rpm



Note: Curve tolerance in conformity with AS9906-2018, appendix 2B.

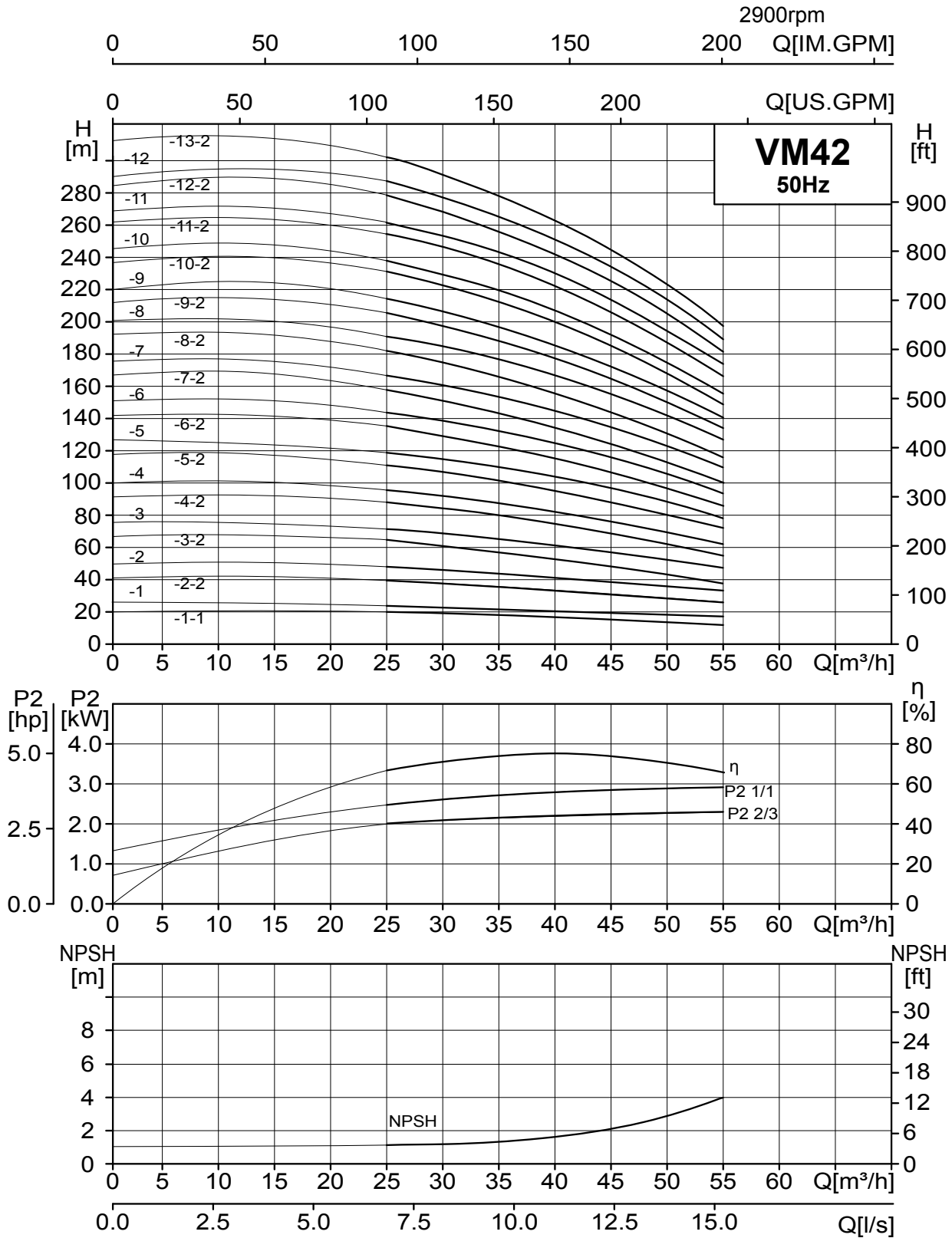
VM32 PERFORMANCE OVERVIEW & DIMENSIONS										
Model	Motor kW	Max Amps	Dimensions**					Flange Data*		Weight kg
			∅	H1	H2	H	D1	D2	Size	
VM32-1-1	1.5	3.21	329	293	727	172	120	DN65	PN25	54
VM32-1	2.2	4.38	329	293	727	172	120	DN65	PN25	56
VM32-2-2	3	5.77	399	345	849	197	132	DN65	PN25	69
VM32-2	4	7.03	399	348	852	215	151	DN65	PN25	75
VM32-3-2	5.5	9.99	560	390	1055	260	168	DN65	PN25	98
VM32-3	5.5	9.99	560	390	1055	260	168	DN65	PN25	98
VM32-4-2	7.5	13.21	630	390	1125	260	168	DN65	PN25	109
VM32-4	7.5	13.21	630	390	1125	260	168	DN65	PN25	109
VM32-5-2	11	19.39	730	500	1335	330	205	DN65	PN25	179
VM32-5	11	19.39	730	500	1335	330	205	DN65	PN25	179
VM32-6-2	11	19.39	800	500	1405	330	205	DN65	PN25	182
VM32-6	11	19.39	800	500	1405	330	205	DN65	PN25	182
VM32-7-2	15	25.46	870	500	1475	330	205	DN65	PN25	200
VM32-7	15	25.46	870	500	1475	330	205	DN65	PN25	200
VM32-8-2	15	25.46	940	500	1545	330	205	DN65	PN25	203
VM32-8	15	25.46	940	500	1545	330	205	DN65	PN25	203
VM32-9-2	18.5	31.29	1010	545	1555	330	205	DN65	PN25	214
VM32-9	18.5	31.29	1010	545	1555	330	205	DN65	PN25	214
VM32-10-2	18.5	31.29	1080	545	1625	330	205	DN65	PN25	217
VM32-10	18.5	31.29	1080	545	1625	330	205	DN65	PN25	217
VM32-11-2	22	36.8	1150	576	1726	375	230	DN65	PN25	272
VM32-11	22	36.8	1150	576	1726	375	230	DN65	PN25	272
VM32-12-2	22	36.8	1220	576	1796	375	230	DN65	PN25	275
VM32-12	22	36.8	1220	576	1796	375	230	DN65	PN25	275
VM32-13-2	30	51.9	1290	650	1940	418	256	DN65	PN25	339
VM32-13	30	51.9	1290	650	1940	418	256	DN65	PN40	339
VM32-14-2	30	51.9	1360	650	2010	418	256	DN65	PN40	342
VM32-14	30	51.9	1360	650	2010	418	256	DN65	PN40	342
VM32-15-2	30	51.9	1430	650	2080	418	256	DN65	PN40	345
VM32-15-2	30	51.9	1430	650	2080	418	256	DN65	PN40	345
VM32-16-2	30	51.9	1500	650	2150	418	256	DN65	PN40	347
VM32-16-2	30	51.9	1500	650	2150	418	256	DN65	PN40	347

\* Counter flange tapping is 2 1/2" BSP (F). Supplied complete with bolts, nuts, washers and gaskets.  
 \*\* The overall dimensions of the single phase motor and explosion proof motors are a little different.  
 480v single phase version also available POA.



# Vertical Multistage Pumps

VM32 HYDRAULIC PERFORMANCE



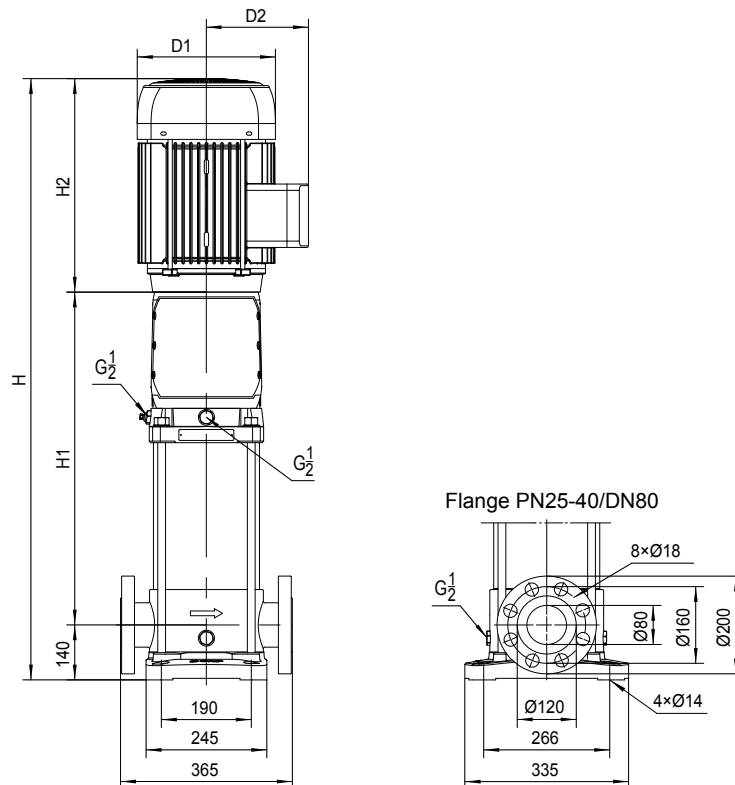
Note: Curve tolerance in conformity with AS9906-2018, appendix 2B.

## VM42 PERFORMANCE OVERVIEW & DIMENSIONS

Model	Motor kW	Max Amps	Dimensions**					Flange Data*		Weight kg
			3Ø	H1	H2	H	DI	D2	Size	
VM42-1-1	3	5.77	350	345	835	197	132	DN80	PN25	73
VM42-1	4	7.03	350	348	838	215	151	DN80	PN25	80
VM42-2-2	5.5	9.99	521	390	1051	260	168	DN80	PN25	103
VM42-2	7.5	13.21	521	390	1051	260	1686	DN80	PN25	111
VM42-3-2	11	19.39	631	500	1271	330	205	DN80	PN25	182
VM42-3	11	19.39	631	500	1271	330	205	DN80	PN25	182
VM42-4-2	15	25.46	711	500	1351	330	205	DN80	PN25	201
VM42-4	15	25.46	711	500	1351	330	205	DN80	PN25	201
VM42-5-2	18.5	31.29	791	545	1476	330	205	DN80	PN25	212
VM42-5	18.5	31.29	791	545	1476	330	205	DN80	PN25	212
VM42-6-2	22	36.8	871	576	1587	375	230	DN80	PN25	269
VM42-6	22	36.8	871	576	1587	375	230	DN80	PN25	269
VM42-7-2	30	51.9	951	650	1741	418	256	DN80	PN25	333
VM42-7	30	51.9	951	650	1741	418	256	DN80	PN25	333
VM42-8-2	30	51.9	1031	650	1821	418	256	DN80	PN25	337
VM42-8	30	51.9	1031	650	1821	418	256	DN80	PN25	337
VM42-9-2	30	51.9	1111	650	1901	418	256	DN80	PN25	340
VM42-9	37	63.3	1111	650	1901	418	256	DN80	PN25	360
VM42-10-2	37	63.3	1191	650	1981	418	256	DN80	PN25	364
VM42-10	37	63.3	1191	650	1981	418	256	DN80	PN25	364
VM42-11-2	45	75.1	1271	700	2111	465	280	DN80	PN40	467
VM42-11	45	75.1	1271	700	2111	465	280	DN80	PN40	467
VM42-12-2	45	75.1	1351	700	2191	465	280	DN80	PN40	471
VM42-12	45	75.1	1351	700	2191	465	280	DN80	PN40	471
VM42-13-2	45	75.1	1431	700	2271	465	280	DN80	PN40	474

\* Counter flange tapping is 3" BSP (F). Supplied complete with bolts, nuts, washers and gaskets.

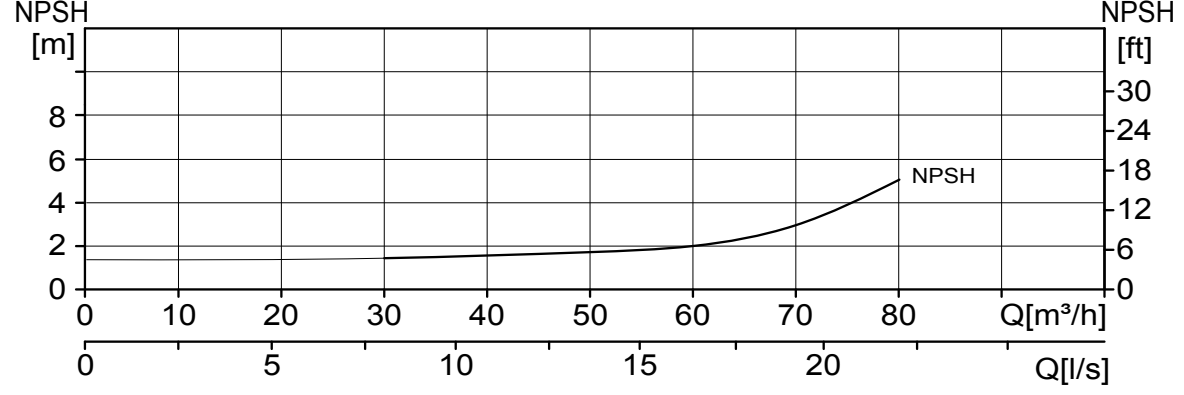
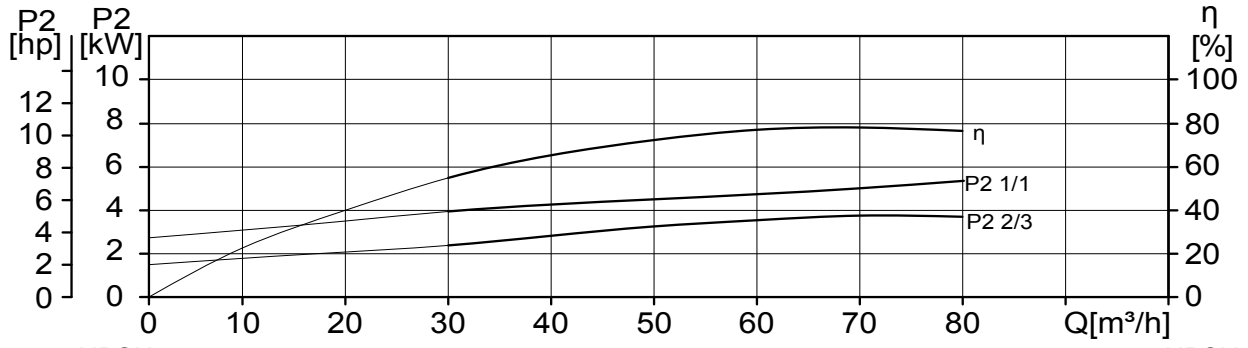
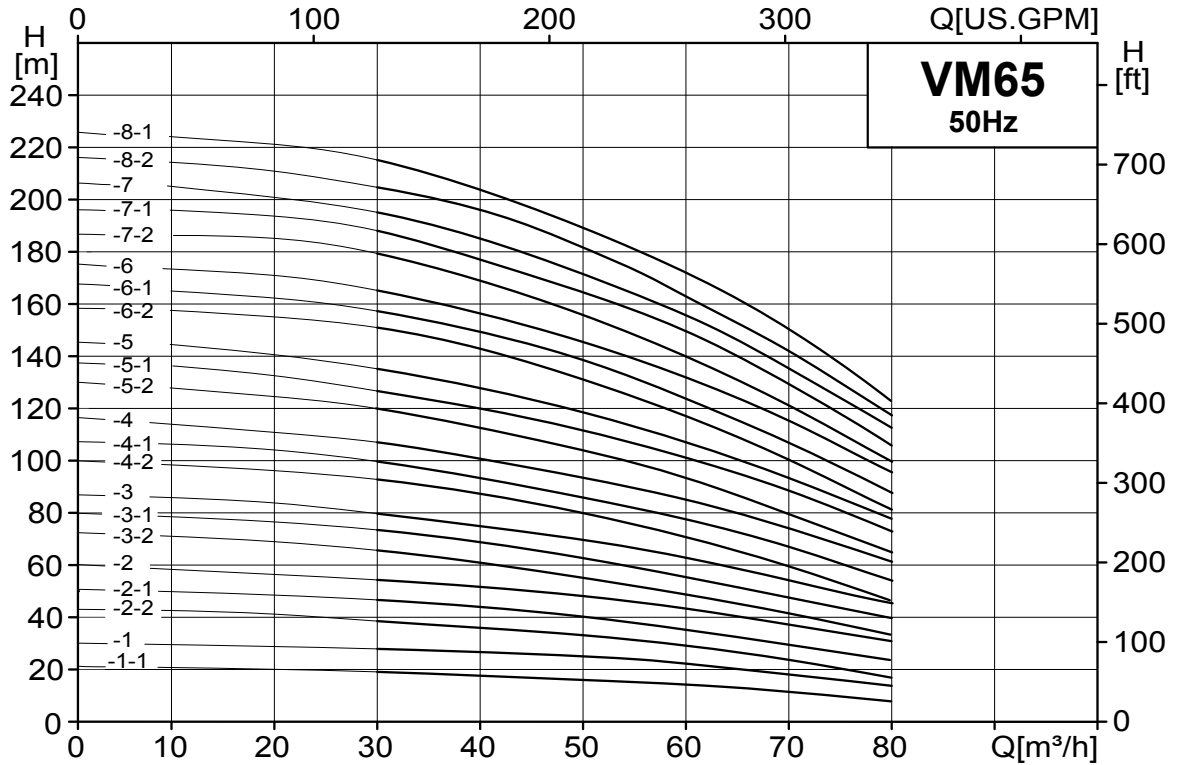
\*\* The overall dimensions of the single phase motor and explosion proof motors are a little different. 480v single phase version also available POA.



# Vertical Multistage Pumps

VM65 HYDRAULIC PERFORMANCE

2900rpm  
Q[IM.GPM]



Note: Curve tolerance in conformity with AS9906-2018, appendix 2B.

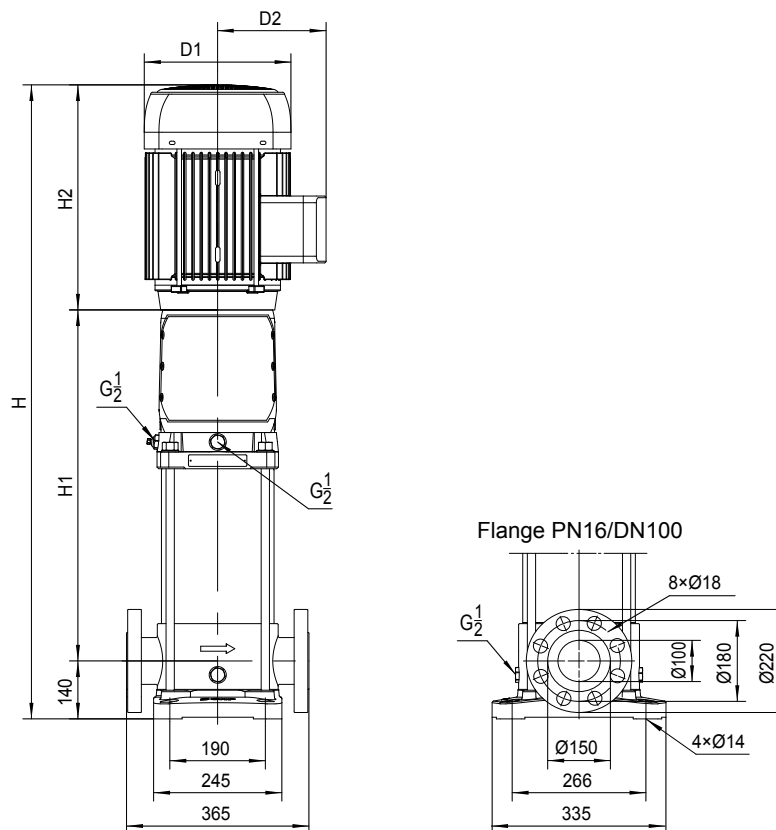


## VM65 PERFORMANCE OVERVIEW & DIMENSIONS

Model	Motor kW	Max Amps	Dimensions**					Flange Data*		Weight kg
			3Ø	H1	H2	H	DI	D2	Size	
VM65-1-1	4	7.03	353	348	841	215	151	DN100	PN25	70
VM65-1	5.5	9.99	444	390	974	260	168	DN100	PN25	90
VM65-2-2	7.5	13.21	527	390	1057	260	168	DN100	PN25	102
VM65-2-1	11	19.39	557	500	1197	330	205	DN100	PN25	170
VM65-2	11	19.39	557	500	1197	330	205	DN100	PN25	170
VM65-3-2	15	25.46	640	500	1280	330	205	DN100	PN25	188
VM65-3-1	15	25.46	640	500	1280	330	205	DN100	PN25	188
VM65-3	18.5	31.29	640	545	1325	330	205	DN100	PN25	196
VM65-4-2	18.5	31.29	723	576	1439	375	230	DN100	PN25	200
VM65-4-1	22	36.8	723	576	1439	375	230	DN100	PN25	253
VM65-4	22	36.8	723	650	1513	418	256	DN100	PN25	253
VM65-5-2	30	51.9	806	650	1596	418	256	DN100	PN25	318
VM65-5-1	30	51.9	806	650	1596	418	256	DN100	PN25	318
VM65-5	30	51.9	806	650	1596	418	256	DN100	PN25	318
VM65-6-2	30	51.9	889	650	1679	418	256	DN100	PN25	322
VM65-6-1	37	63.3	889	650	1679	418	256	DN100	PN25	342
VM65-6	37	63.3	889	650	1679	418	256	DN100	PN25	342
VM65-7-2	37	63.3	972	650	1762	418	256	DN100	PN25	346
VM65-7-1	37	63.3	972	650	1762	418	256	DN100	PN25	346
VM65-7	45	75.1	972	700	1812	465	280	DN100	PN25	446
VM65-8-2	45	75.1	1055	700	1895	465	280	DN100	PN25	450
VM65-8-1	45	75.1	1055	700	1895	465	280	DN100	PN25	450

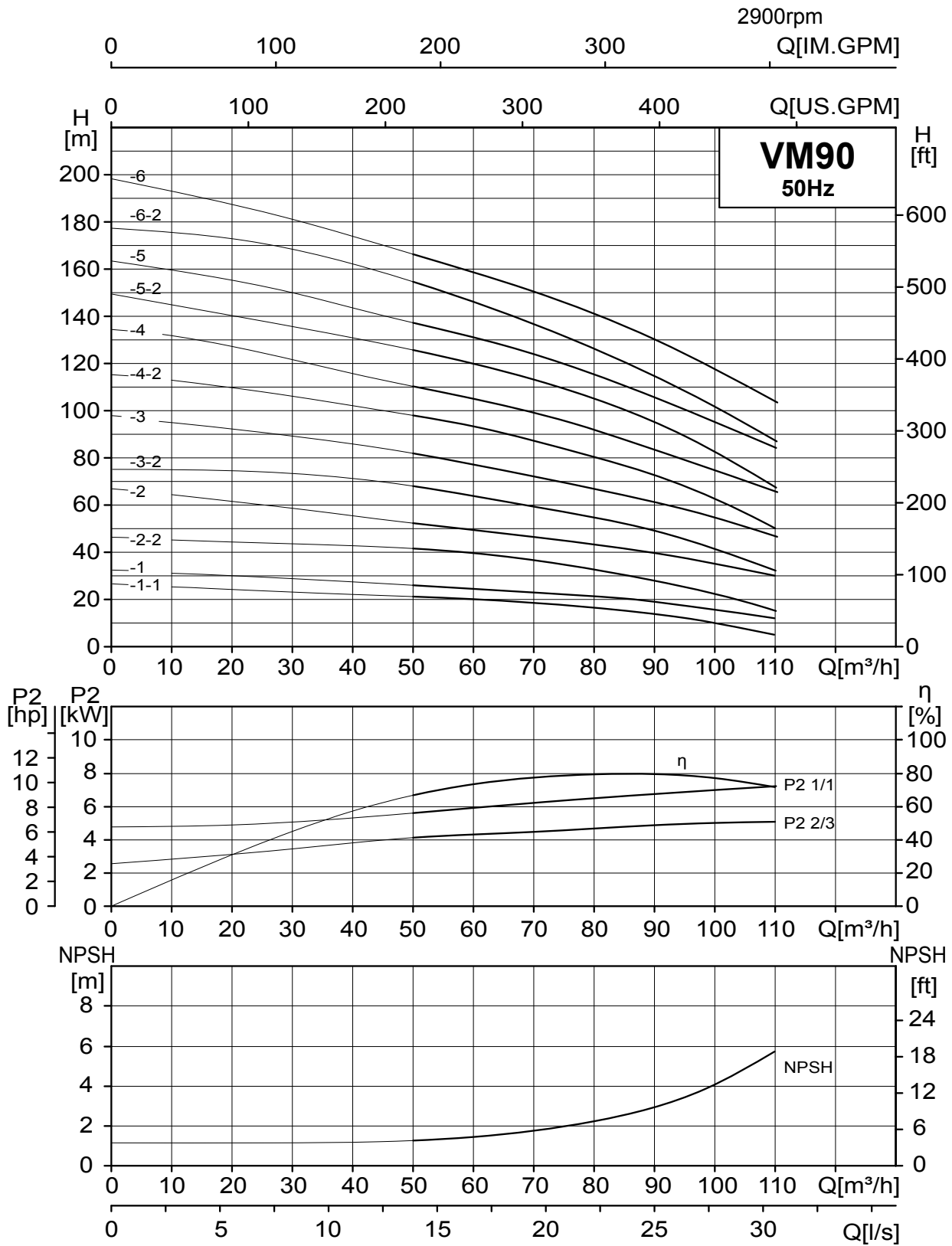
\* Counter flange tapping is 4" BSP (F). Supplied complete with bolts, nuts, washers and gaskets.

\*\* The overall dimensions of the single phase motor and and explosion proof motors are a little different.



# Vertical Multistage Pumps

VM90 HYDRAULIC PERFORMANCE



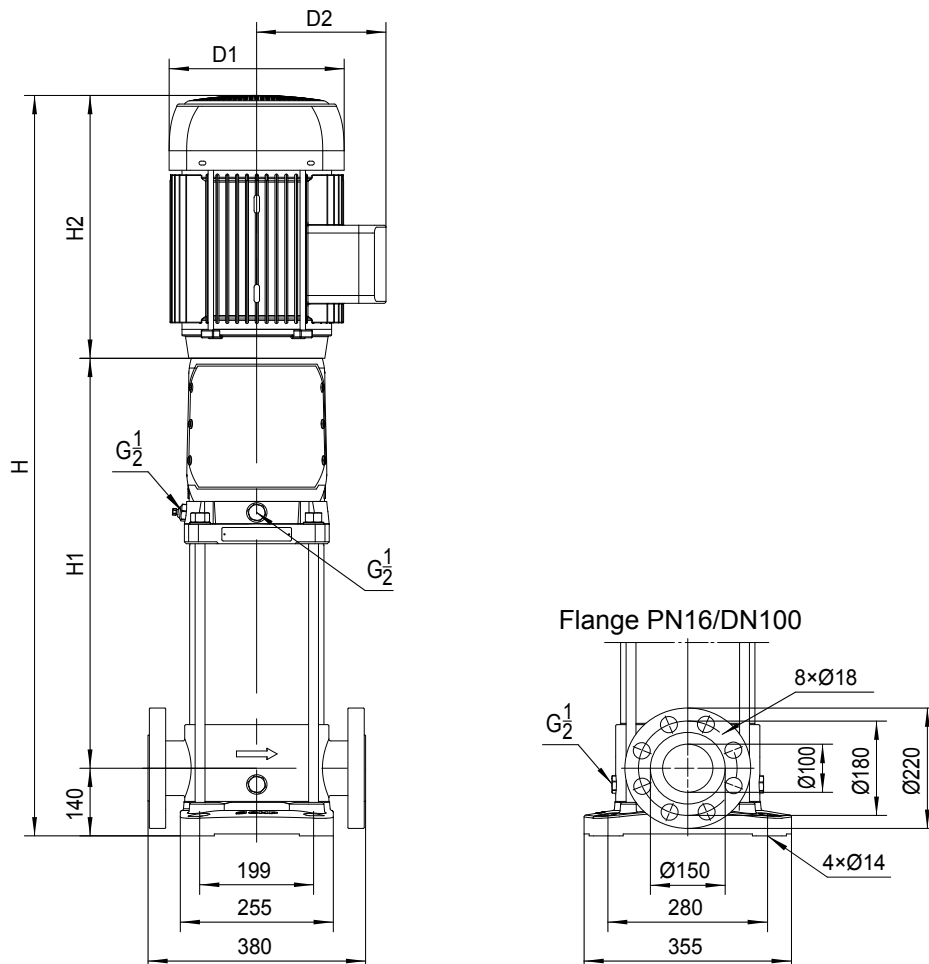
Note: Curve tolerance in conformity with AS9906-2018, appendix 2B.

## VM90 PERFORMANCE OVERVIEW & DIMENSIONS

Model	Motor kW	Max Amps	Dimensions**					Flange Data*		Weight kg
			3Ø	H1	H2	H	DI	D2	Size	
VM90-1-1	5.5	9.99	453	390	983	260	168	DN100	PN25	101
VM90-1	7.5	31.21	453	390	983	260	168	DN100	PN25	109
VM90-2-2	11	19.39	575	500	1215	330	205	DN100	PN25	181
VM90-2	15	25.46	575	500	1215	330	205	DN100	PN25	196
VM90-3-2	18.5	31.29	667	545	1352	330	205	DN100	PN25	208
VM90-3	22	36.8	667	576	1383	375	230	DN100	PN25	261
VM90-4-2	30	51.9	759	650	1549	418	256	DN100	PN25	326
VM90-4	30	51.9	759	650	1549	418	256	DN100	PN25	326
VM90-5-2	37	63.3	851	650	1641	418	256	DN100	PN25	350
VM90-5	37	63.3	851	650	1641	418	256	DN100	PN25	350
VM90-6-2	45	75.1	943	700	1783	465	280	DN100	PN25	454
VM90-6	45	75.1	943	700	1783	465	280	DN100	PN25	454

\* Counter flange tapping is 4" BSP (F). Supplied complete with bolts, nuts, washers and gaskets.

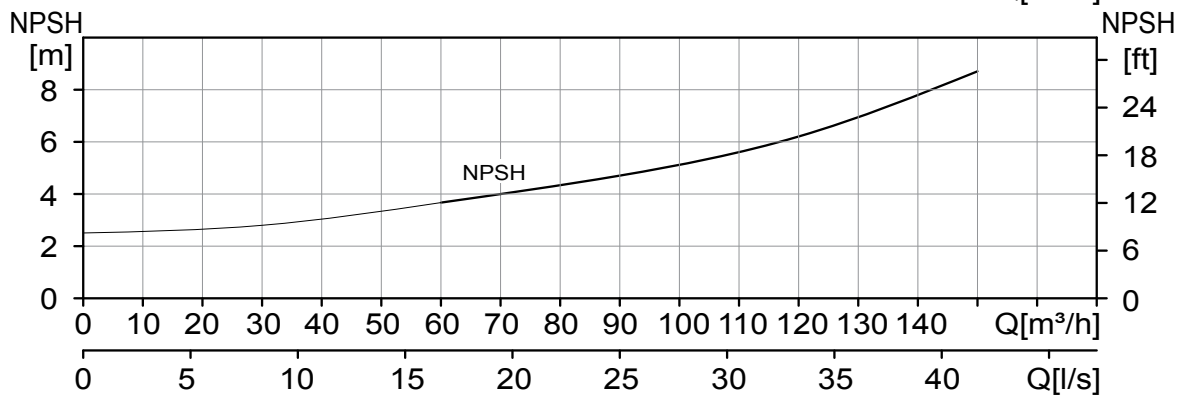
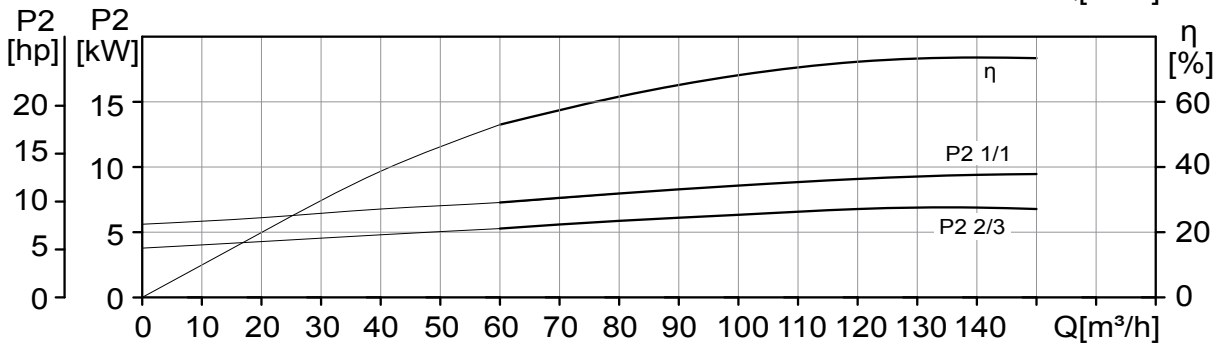
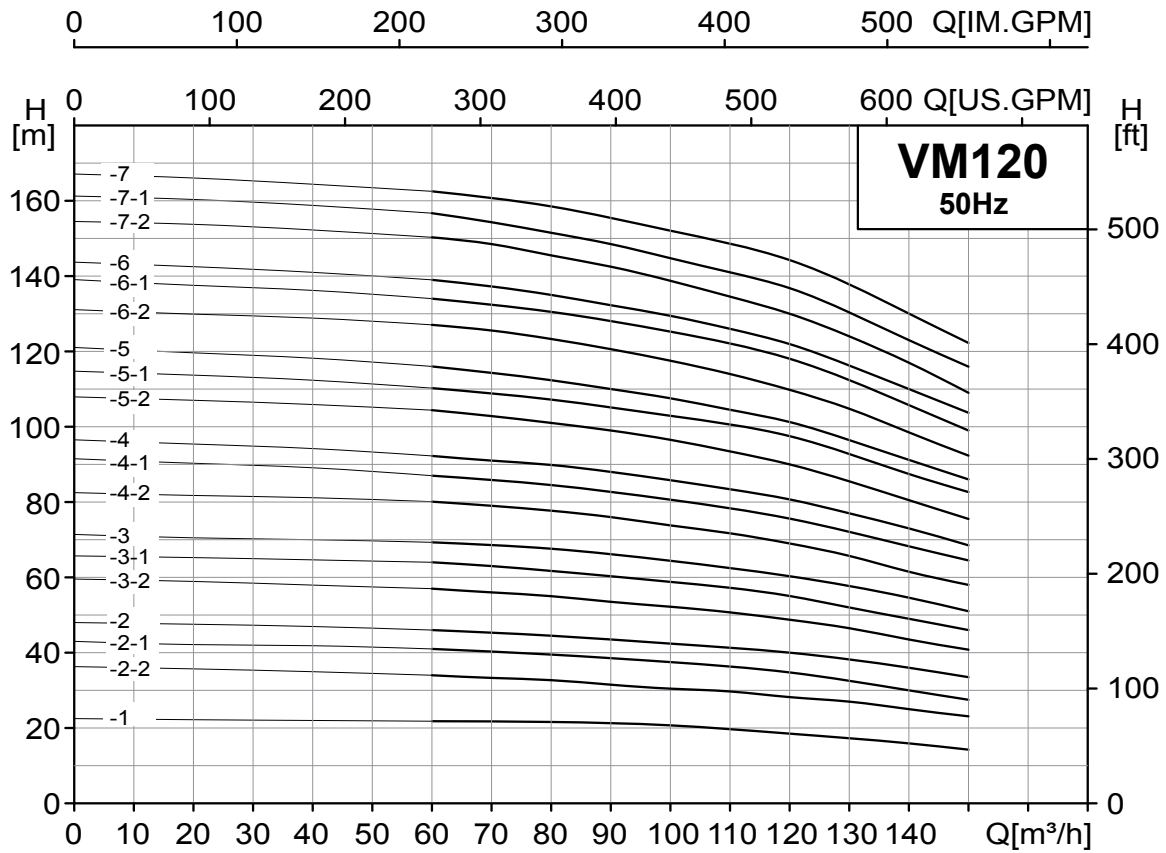
\*\* The overall dimensions of the single phase motor and explosion proof motors are a little different.



# Vertical Multistage Pumps

## VM90 HYDRAULIC PERFORMANCE

2950rpm

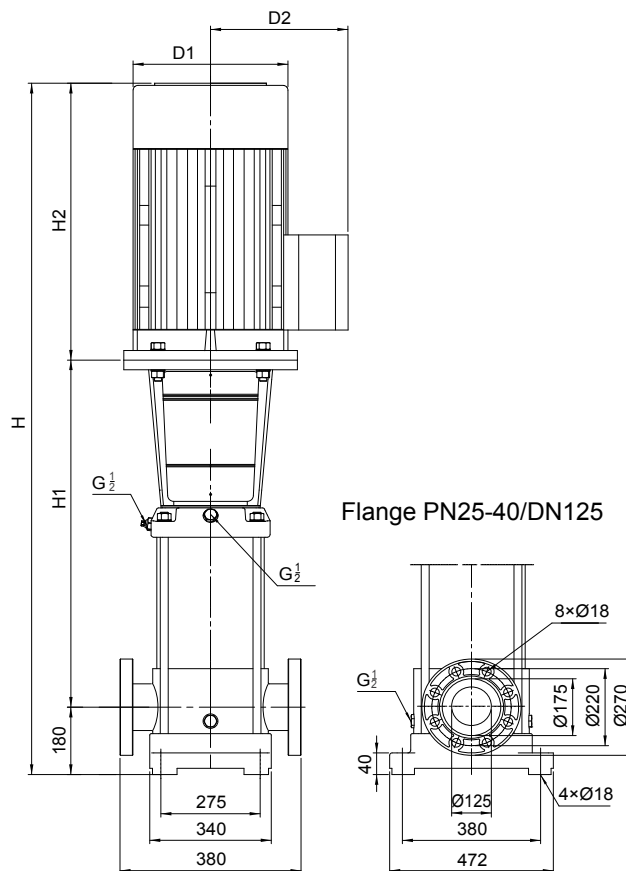


Note: Curve tolerance in conformity with AS9906-2018, appendix 2B.

VM120 PERFORMANCE OVERVIEW & DIMENSIONS									
Model	Motor kW	Dimensions**					Flange Data*		Weight kg
		H1	H2	H	DI	D2	Size	Rating	
VM120-1	11	660	500	1340	330	205	DN125	PN25	213
VM120-2-2	15	820	500	1500	330	205	DN125	PN25	237
VM120-2-1	18.5	820	545	1545	330	205	DN125	PN25	250
VM120-2	22	820	576	1576	375	230	DN125	PN25	297
VM120-3-2	30	980	650	1810	488	256	DN125	PN25	362
VM120-3-1	30	980	650	1810	418	256	DN125	PN25	362
VM120-3	30	980	650	1810	418	256	DN125	PN25	362
VM120-4-2	37	1140	650	1970	418	256	DN125	PN25	392
VM120-4-1	37	1140	650	1970	418	256	DN125	PN25	392
VM120-4	45	1140	700	2020	465	280	DN125	PN25	488
VM120-5-2	45	1300	700	2180	465	280	DN125	PN25	496
VM120-5-1	45	1300	700	2180	465	280	DN125	PN25	496
VM120-5	55	1330	770	2280	506	305	DN125	PN25	619
VM120-6-2	55	1490	770	2440	506	305	DN125	PN25	628
VM120-6-1	55	1490	770	2440	506	305	DN125	PN25	628
VM120-6	75	1490	835	2505	560	335	DN125	PN25	744
VM120-7-2	75	1650	835	2665	560	335	DN125	PN25	753
VM120-7-1	75	1650	835	2665	560	335	DN125	PN25	753
VM120-7	75	1650	835	2665	560	335	DN125	PN25	753

\* Counter flange not supplied.

\*\* The overall dimensions of the single phase motor and and explosion proof motors are a little different.

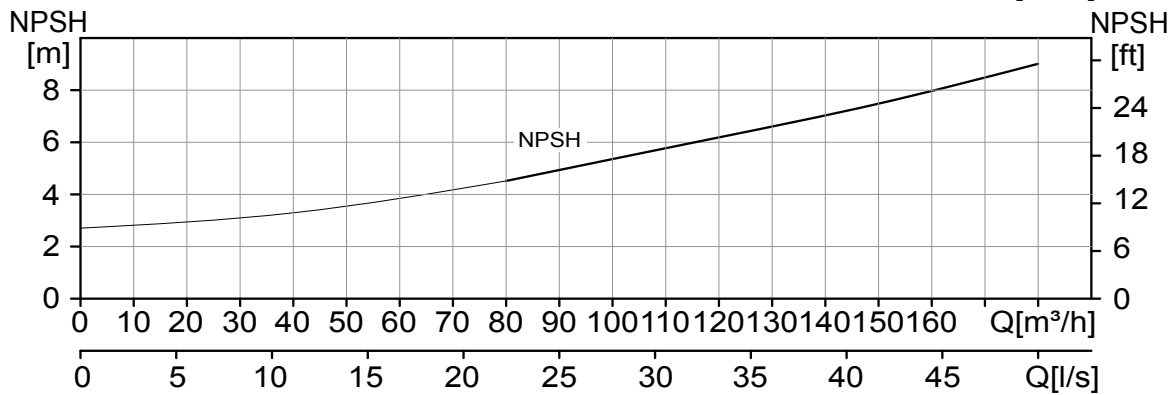
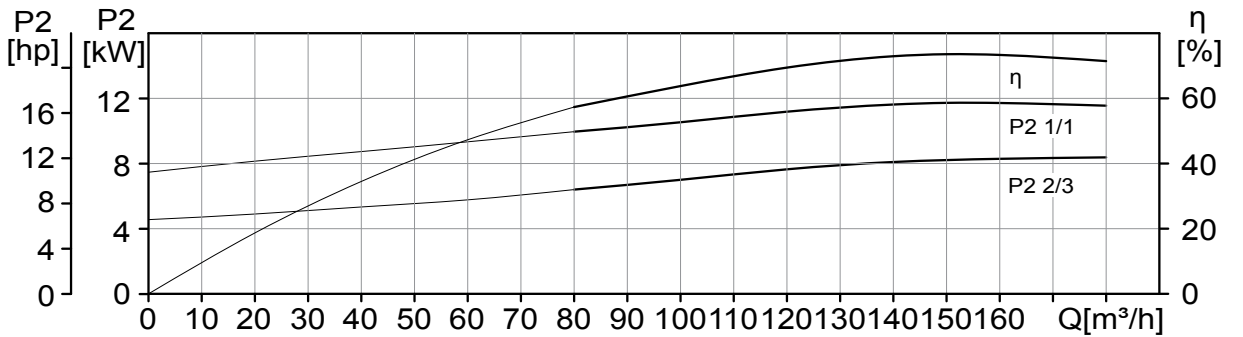
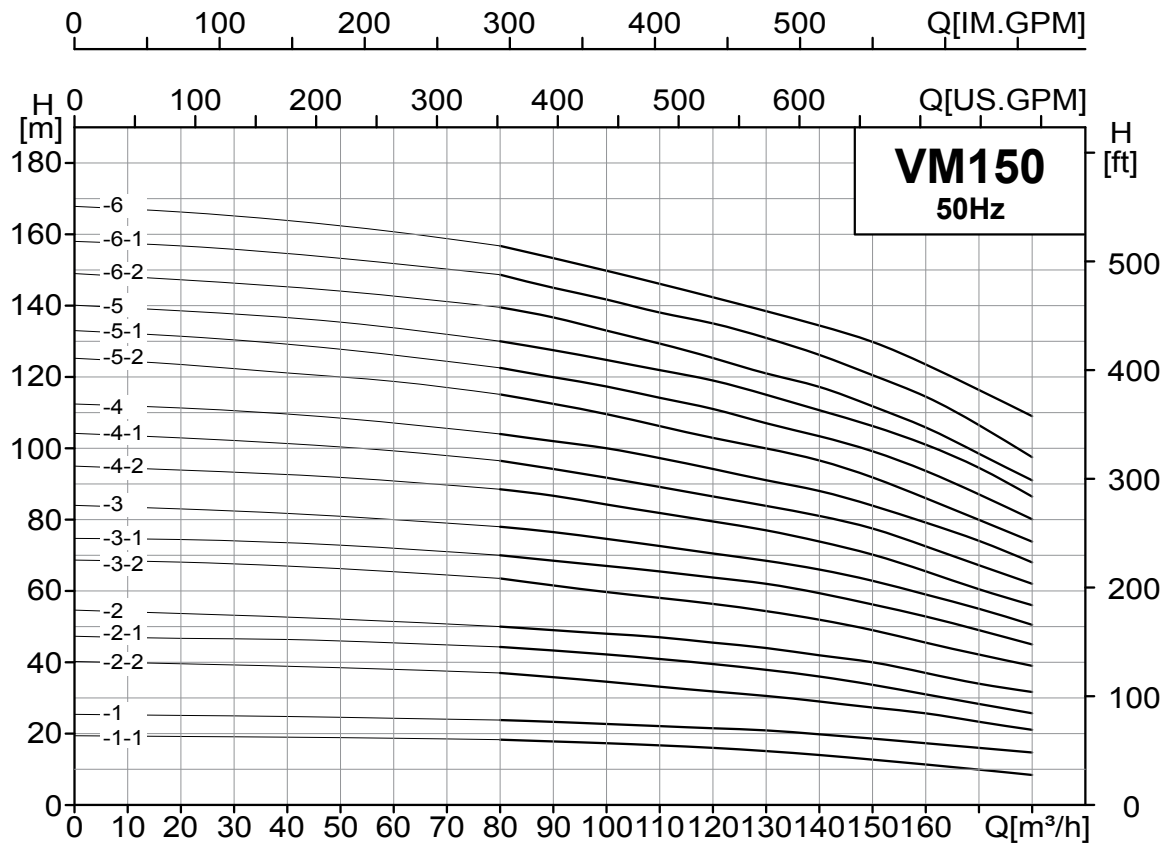


**NOTE:** Price on application for VM120 range. Please contact [commercial@davey.com.au](mailto:commercial@davey.com.au)

# Vertical Multistage Pumps

VM150 HYDRAULIC PERFORMANCE

2950rpm

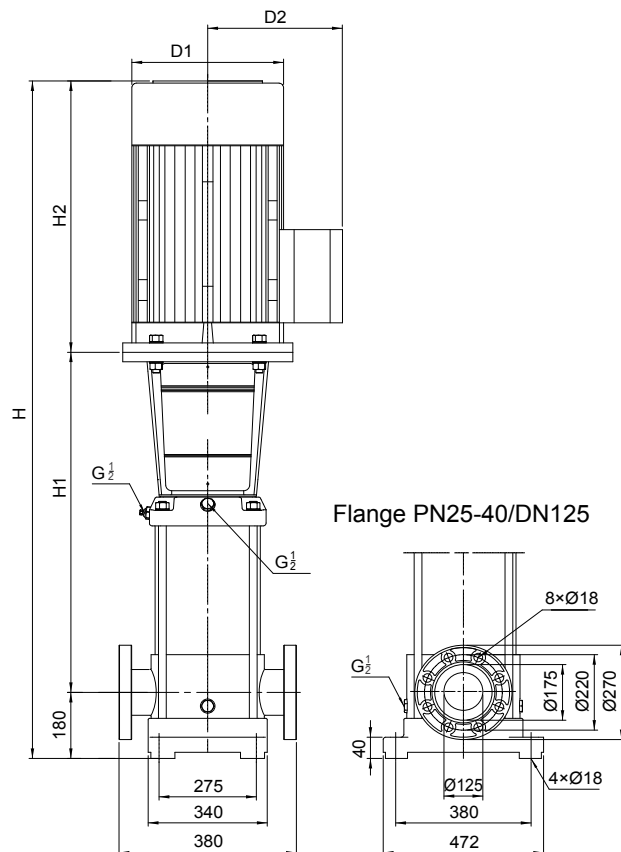


Note: Curve tolerance in conformity with AS9906-2018, appendix 2B.

VM150 PERFORMANCE OVERVIEW & DIMENSIONS									
Model	Motor kW	Dimensions**					Flange Data*		Weight kg
		H1	H2	H	DI	D2	Size	Rating	
VM150-1-1	11	660	500	1340	330	205	DN125	PN25	214
VM150-1	15	660	500	1340	330	205	DN125	PN25	227
VM150-2-2	18.5	820	545	1545	330	205	DN125	PN25	250
VM150-2-1	22	820	576	1576	375	230	DN125	PN25	295
VM150-2	30	820	650	1650	418	256	DN125	PN25	351
VM150-3-2	30	980	650	1810	418	256	DN125	PN25	361
VM150-3-1	37	980	650	1810	418	256	DN125	PN25	382
VM150-3	37	980	650	1810	418	256	DN125	PN25	382
VM150-4-2	45	1140	700	2020	465	280	DN125	PN25	489
VM150-4-1	45	1140	700	2020	465	280	DN125	PN25	489
VM150-4	55	1170	770	2120	506	305	DN125	PN25	612
VM150-5-2	55	1330	770	2280	506	305	DN125	PN25	623
VM150-5-1	75	1330	835	2345	560	335	DN125	PN25	739
VM150-5	75	1330	835	2345	560	335	DN125	PN25	739
VM150-6-2	75	1490	835	2505	560	335	DN125	PN25	749
VM150-6-1	75	1490	835	2505	560	335	DN125	PN25	749
VM150-6	75	1490	835	2505	560	335	DN125	PN25	749

\* Counter flange not supplied.

\*\* The overall dimensions of the single phase motor and explosion proof motors are a little different.

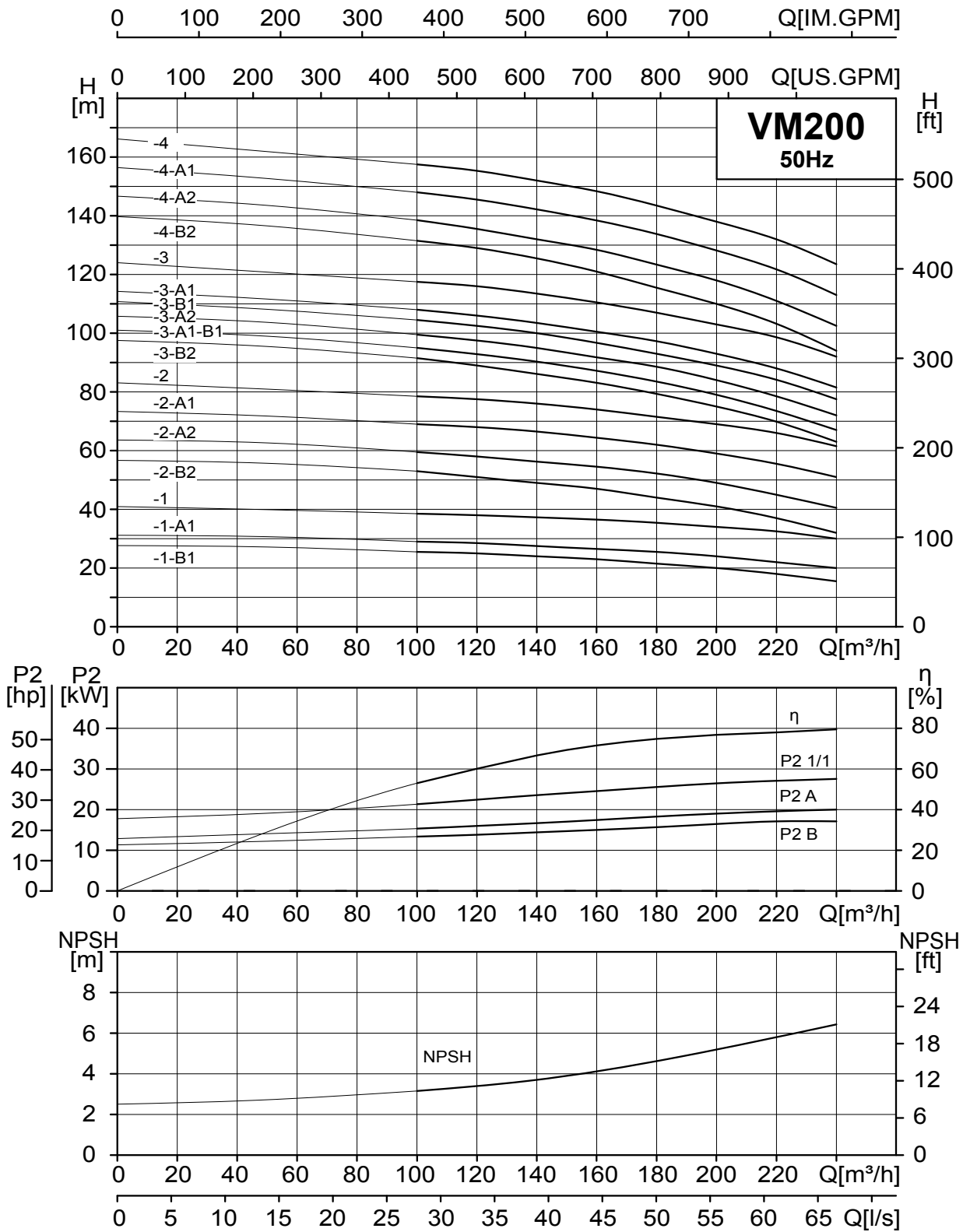


**NOTE:** Price on application for VM150 range. Please contact [commercial@davey.com.au](mailto:commercial@davey.com.au)

# Vertical Multistage Pumps

## VM200 HYDRAULIC PERFORMANCE

2950rpm



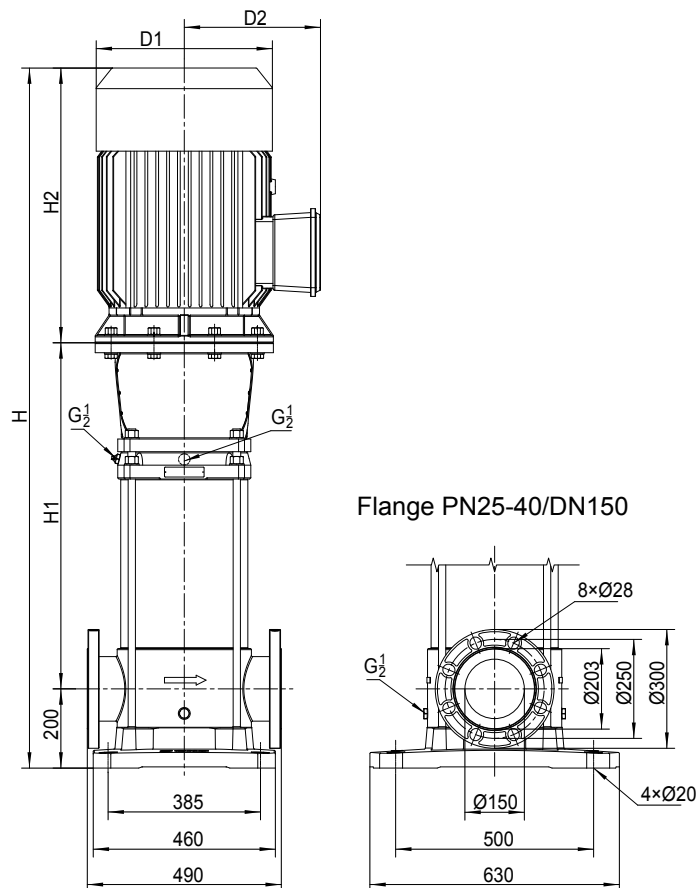
Note: Curve tolerance in conformity with AS9906-2018, appendix 2B.



VM200 PERFORMANCE OVERVIEW & DIMENSIONS									
Model	Motor kW	Dimensions**					Flange Data*		Weight kg
		H1	H2	H	DI	D2	Size	Rating	
VM200-1-B	18.5	680	545	1425	330	205	DN150	PN25	314
VM200-1-A	22	680	576	1456	375	230	DN150	PN25	350
VM200-1	30	680	650	1530	418	256	DN150	PN25	407
VM200-2-2B	37	874	650	1724	418	256	DN150	PN25	451
VM200-2-2A	45	874	700	1774	465	280	DN150	PN25	506
VM200-2-A	55	904	770	1874	506	305	DN150	PN25	601
VM200-2	55	904	770	1874	506	305	DN150	PN25	601
VM200-3-2B	75	1098	835	2133	560	335	DN150	PN25	754
VM200-3-A-B	75	1098	835	2133	560	335	DN150	PN25	754
VM200-3-2A	75	1098	835	2133	560	335	DN150	PN25	754
VM200-3-B	75	1098	835	2133	560	335	DN150	PN25	754
VM200-3-A	75	1098	835	2133	560	335	DN150	PN25	754
VM200-3	90	1098	885	2183	560	335	DN150	PN25	823
VM200-4-2B	90	1292	885	2377	560	335	DN150	PN25	836
VM200-4-2A	110	1292	1040	2532	655	400	DN150	PN25	1175
VM200-4-A	110	1292	1040	2532	655	400	DN150	PN25	1175
VM200-4	110	1292	1040	2532	655	400	DN150	PN25	1175

\* Counter flange not supplied.

\*\* The overall dimensions of the single phase motor and explosion proof motors are a little different.



**NOTE:** Price on application for VM200 range. Please contact [commercial@davey.com.au](mailto:commercial@davey.com.au)

# Vertical Multistage Pumps

## Davey Vertical Multistage (VM) Pump Range Specification

Davey vertical multistage centrifugal pumps are corrosion and abrasion resistant, low maintenance and easy to install. The range is suitable for pumping clean, non-aggressive liquids free of fibres in suspension and are suitable for many applications.

### Features include

- All stainless-steel pump ends; hydraulic parts are 304SS grade and shafts are 316SS grade for better corrosion and abrasion resistance (AS4020 compliant). Full 316ss versions available.
- Mechanical seals on M series VM pumps are a threaded cartridge type for easy servicing. The standard elastomers are EPDM rubber and the seal faces are tungsten carbide and carbon.
- For pumps fitted with motors above 5.5kW the shaft seal can be replaced without removing the motor.
- Floating teflon neck rings help maintain high pumping efficiencies and also result in less vibration, noise and sensitivity to thermal expansion.
- Raised bottom bearing in tungsten carbide to reduce any risk of damage from sediment
- Pump mounting bases
  - VM1 to VM20 is constructed from cast aluminium, with motor support lantern constructed of cast iron with electrocataphoretic coating.
  - VM32 to VM200 is constructed of cast iron with motor support lantern constructed of cast iron with electrocataphoretic coating.
- The pumps are configured with in-line suction and discharge slip flanges to AS2129-2000
- Threaded 304SS companion flanges with gaskets, nuts, bolts and washers are included with every pump (unless part of a Davey built pumpset). Other flange and pipe connections are available on request.
- The pumps are rated for continuous operation.
- Suitable for outdoor applications with an IP55 rating



### Working Conditions

The range is suitable for pumping clean, non-aggressive liquids free of fibres in suspension.

- Liquid temperatures from -15°C up to 120°C
- Ambient temperature up to +40°C
- Altitudes to 1000m above sea level with minimal performance losses.

For pump installation / operation at altitudes above 1000m contact your Davey representative.

### Performance Curves

Performance curves tolerances comply with ISO9906: 2018 Grade 2B, meaning:

- Flow (Q) is within +/- 9%
- Head (H) is within +/- 7%
- Power (P) is within +/- 9%
- Efficiency (η) is within -7%

Where air free water is at 20°C and has a kinematic viscosity of 1mm<sup>2</sup>/sec.

Curves are derived with constant 50Hz motor speeds of 2900rpm and 2950rpm.

The operating region of the pump is indicated by the thickened dark curve line.

### Motors

The motors are Totally Enclosed Fan Cooled (TEFC) motors with class F insulation and minimum IP55 ingress protection All MEPS motors up to 22kW are IE2. Motors from 30kW and above are IE3. Other efficiency options are available on request.

All motors are compliant with - AS/NZS 3820 Safety Standard.

# Please note:

## Warranty Limitations

1. Guarantee periods are subject to due compliance with the Terms & Conditions and the relevant product Installation & Operating Instructions.
2. The Trade Catalogue is not a complete guide to product usage; refer to the specific product instructions and your Davey Support Centre for additional information.
3. All images are a representation only and are not to scale.
4. Product specifications are subject to change without notification.

## Goods Returns (Summary – refer to clause 10 of the Terms & Conditions)

1. All deliveries should be inspected for missing or damaged goods before signing consignment notes; and any exceptions should be listed on the consignment note.
2. Notify Davey within 3 working days of delivery of: goods sent incorrectly, missing or transport damaged goods.
3. Return of goods for credit will not be accepted without prior written approval from Davey and is conditional upon:
  - > return within 60 days of the date of delivery and freight and insurance prepaid
  - > goods being listed in the current Price List and in an unused, unsoiled, undamaged and resaleable condition in original packaging
  - > supply of a goods return advice stating the original invoice number, date of purchase, customer order number and reason for return
4. Where goods are returned to Davey due to reasons beyond Davey's control, the value of any credit (which will be at Davey's discretion) will be subject to a "RESTOCKING CHARGE" of not less than 15% of the value of the goods.
5. All Davey chlorinators, pumps and controllers are 220/250 Volt, 50Hz single phase unless otherwise stated.
6. Special order products and products listed as "Price on Application" are ineligible for return.

## Terms & Conditions

All trading in Davey products is subject to the Terms and Conditions of Sale available at:

**Australia: [orders.davey.com.au](https://orders.davey.com.au)**

**New Zealand: [orders.daveynz.co.nz](https://orders.daveynz.co.nz)**

## For all enquiries

### DAVEY SUPPORT CENTRE (AUSTRALIA)

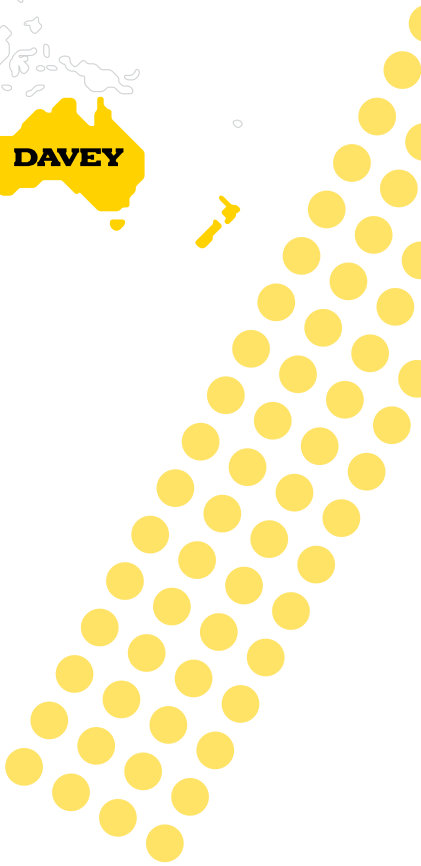
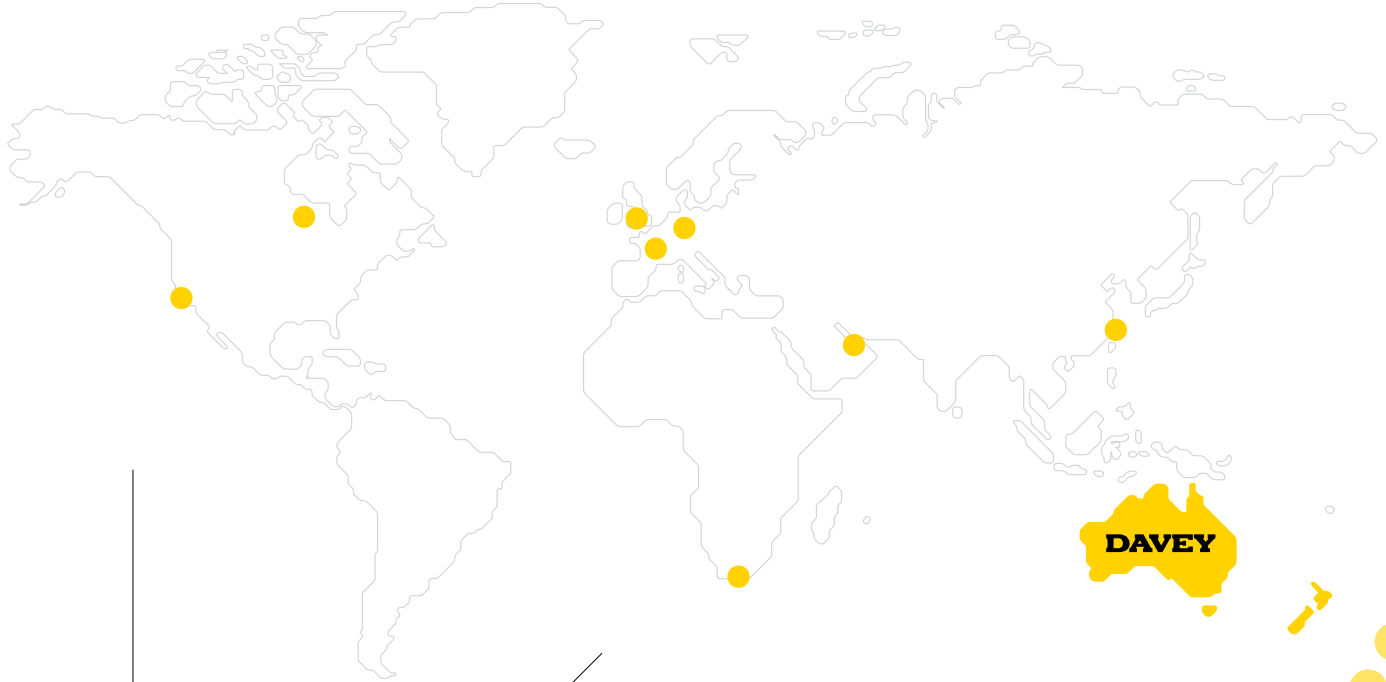
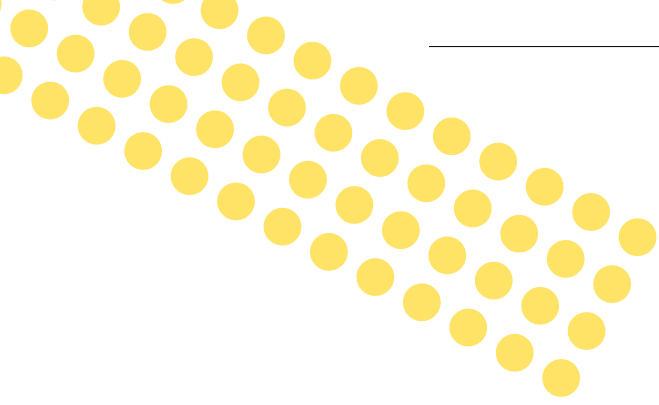
Phone: 1300 232 839 | [sales@davey.com.au](mailto:sales@davey.com.au) | **daveywater.com**

Davey Web Ordering: [orders.davey.com.au](https://orders.davey.com.au)

### DAVEY SUPPORT CENTRE (NEW ZEALAND)

Phone: 0800 654 333 | Fax: +64 9 527 7654 | [sales@dwp.co.nz](mailto:sales@dwp.co.nz) | **daveywater.com**

Davey Web Ordering: [orders.daveynz.co.nz](https://orders.daveynz.co.nz)



# DAVEY

**CUSTOMER SUPPORT** Ph 1300 232 839 (AU) | 0800 654 333 (NZ)



## daveywater.com

Davey Water Products Pty Ltd  
A member of the Waterco Group  
ABN 18 066 327 517

### AUSTRALIA H/O & MFG

6 Lakeview Drive,  
Scoresby, VIC Australia 3179  
Ph: 1300 232 839  
Email: sales@daveywater.com

### NEW ZEALAND

7 Rockridge Avenue,  
Penrose, Auckland NZ 1061  
Ph: +64 9 570 9135  
Fax: +64 9 527 7654  
Email: sales@dwp.co.nz

### EUROPE

Ph: +33 4 72 13 95 07 | Email: info@daveyeurope.eu

### NORTH AMERICA

Ph: 1-888-755-8654 | Email: info@daveyusa.com

### MIDDLE EAST

Ph: +971 50 6368764 | Email: info@daveyuae.com

### H/O & MFG SCORESBY

