

IRRIFRANCE

IRRIFRANCE GROUPE
Reel machines

Irrigation made in France

The 10 reasons to choose IRRIFRANCE



1

Irrifrance has more than **55 years of experience** in the services of farmers, know-how recognized worldwide in the market.

2

The **only French manufacturer** who **produces since Paulhan site (Hérault)** in its workshops: laser cutting, folding, welding, painting, mounting, rolling ...

3

A **complete catalog** which includes the product range: **reel machines, pivots** and **lateral moves**, solid set systems, **pipes and accessories** as well as the localized **irrigation with DRIPLI© system**.

4

Polyethylene pipes, produced on the Paulhan site with 100% virgin resin. With its own extrusion workshop, Irrifrance provides **5 years tube warranty**.

5

The **galvanization** of Irrifrance products, to European standards: **hot dip galvanizing in a bath of molten zinc at 450 ° - standard in ISO 1461**.

6

Compliance with all **AFNOR safety** standards and European regulations.

7

Products recognized for their **ergonomics**, their **robustness** and their **longevity**. **The proof is done by the Irrifrance reel machine high value in the second hand market**.

8

Innovative products for precision irrigation thanks to a high performance of electronic panels, easy to use and the best functionalities on the market.

9

A project design department which assesses all parameters to advise you on the optimal solution depending on the culture, type of soil; daily rainfall required, flow m³/h available, topography and area of plots.

10

An **after-sales service** which provides support to the dealers and distributors: guarantees, maintenance, spare parts and training.



Irrifrance Mission



Dedicated in the design, manufacture and sale of equipment for agricultural irrigation since 1967, IRRIFRANCE is a historic French manufacturer established in Paulhan (Hérault) with a factory park spread over 14 hectares.

In a context where water resources are decreasing considerably and where the population is increasing, research for water savings, performance and regularity in yields, is essential.

The company designs products to improve the ability of producers to meet food needs, while preserving water resources and optimizing energy consumption.

Thanks to its team of engineers, IRRIFRANCE is developing its capacity for innovation in its Research and Development department. This is where all of the brand's products are designed. In order to guarantee the high quality of its machines, IRRIFRANCE produces each of them directly in its factory in France, and ensures optimal customer service to the authorized dealer network with personalized assistance, a support team and a dedicated department for technical training.

IRRIFRANCE: made in France.

The company chooses to use French raw materials and employ a local workforce to guarantee the know-how, quality and sustainability of its products, and thus build a bond of trust with its entire network of authorized distributors and end-user customers.

IRRIFRANCE is also the only manufacturer on the market to manage spare parts on all of its products. The stock, production and selection of spare parts are managed directly on the Paulhan industrial site. A dedicated team provides support to all authorized distributors.

Irrifrance, a complete catalog of irrigation equipment for agriculture

In addition to its range of Pivots and front ramps products,

Pivot and lateral moves :

Irrifrance range based on VXP structure is available from 114 mm to 245 mm diameter.

The Irrifrance control panel range is adapted to the different needs, from basic use to full electronic functionalities, together with the options: VNC interface, GSM, absolute coder, counting wheel, GPS option, a large choice for an irrigation solution with high precision.

With its own extrusion workshop, Irrifrance has developed the Polychem®, a unique lagging technique that allows 15 year tube warranty very suitable for corrosive or reuse water.

Specific equipment is designed to optimize the irrigated area: Pivoflex, retractable overhang, lateral moves with adapted runs for all fields.

Solar pivot brings on top autonomy and performance using green energy.



Accessories, Pipes and Solid Set

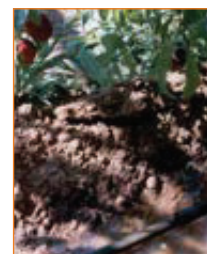
Irrifrance offers a large catalog of accessories and pipes and also solid set equipment.

Movable pipes intended for movable installations, perfectly watertight, the possibility of bringing water in great length at a high pressure, Pipes intended for supplying the reel machines.

Solid set system particularly suitable for full-field market gardening or in addition to perimeters irrigated by pivots. This Irrifrance know-how takes benefits from the manufacture of homemade PE.

Localized irrigation: the DRIPLI® system

The DRIPLI® localized irrigation system was created by IRRIFRANCE almost 40 years ago. Water and energy efficient, it brings water around the roots with a flow rate of only 0.5 to 1.5 bars. Used worldwide, DRIPLI® technology is easy to use and provides precision and reliability. It is particularly suitable for perennial crops grown online, and in particular all fruit crops, such as citrus fruits, bananas, dates, apricots, peaches, etc.



IRRIFRANCE TROLLEY RANGE



SUPER MINI



OPTIMA 1000



OPTIMA 1005-1010 Pendular



Ski kit (réf P20230)



Wheel kit (réf T40152)



Trolley OPTIMA serie
Fixed way 1,75m Low legs



High trolley with adjustable
track



Offset high trolley*
Offset and central



Ski kit (réf S44130)



Wheel kit (réf T40152)



2008 Central trolley



2008 Offset trolley*



VPS Central trolley



VPS Offset trolley*



2008 kit trolley guide



ancrage kit



VPS kit trolley



VPS kit trolley guide

Trolley	Reel Machine	Slider type	Minimum Track outer mounting	Minimum Track inner mounting	Maximum Track outer mounting	Maximum Track inner mounting	Leg fitting/slider
Pendular Trolley	1000, 1005 and 1010	Mini 50 Trolley slider	1540 mm		2140 mm		
Optima Trolley fixed track low profile	From 1015 to 1037	without slider	1750 mm	1170 mm			
Optima or 2008 Trolley High profile adjustable track	All products	Standard Slider	1670 mm	1090 mm	2250 mm	1960 mm	260 mm
Optima or 2008 Trolley High profile adjustable track	All products	3 positions Slider	1980 mm	1400 mm	2560 mm	2270 mm	260 mm
Optima or 2008 offset Trolley high profile adjustable track	All products	3 positions Slider	1640 mm	1350 mm	1930 mm	1640 mm	260 mm

* S re-centering the barrel on an optional offset sled.

IRRIFRANCE REEL MACHINE RANGE



MICRO	
44-50	
Ø	44 - 120 m
Ø	50 - 110 m

MINI	
63-70	
Ø	63 - 280 m
Ø	70 - 200 m

OPTIMA	
1000	
Ø	63 - 300 m
Ø	75 - 250 m
Ø	82 - 220 m



OPTIMA	
1005	1010
Ø 75-300 m	Ø 75-380 m
Ø 82-260 m	Ø 82-300 m
	Ø 90-270 m



OPTIMA	
1015	1020
Ø 75 - 400 m	Ø 90 - 400 m
Ø 82 - 350 m	Ø 90 - 450 m
Ø 82 - 370 m	Ø 90 - 480 m
Ø 90 - 340 m	Ø 100 - 370 m
Ø 90 - 350 m	Ø 100 - 410 m
Ø 100 - 260 m	Ø 110 - 340 m

NEW	
1021	1021
Ø 90 - 500 m	
Ø 100 - 450 m	



OPTIMA	
boggie	
1045	1055
Ø 110 - 560 m	Ø 110 - 650 m
Ø 120 - 460 m	Ø 120 - 620 m
Ø 120 - 520 m	Ø 120 - 640 m
Ø 125 - 440 m	Ø 125 - 600 m



VPS	
1040	1040 BIS
Ø 100 - 500 m	Ø 100 - 450 m
Ø 100 - 550 m	Ø 110 - 500 m
Ø 110 - 400 m	Ø 110 - 530 m
Ø 120 - 360 m	Ø 120 - 410 m
Ø 125 - 350 m	Ø 125 - 400 m



VPS	
1050	1055
Ø 110 - 560 m	Ø 110 - 650 m
Ø 110 - 600 m	Ø 120 - 620 m
Ø 120 - 520 m	Ø 120 - 640 m
Ø 125 - 500 m	Ø 125 - 600 m

VPS	
2061	
Ø	125 - 600 m
Ø	125 - 650 m
Ø	135 - 550 m
Ø	135 - 600 m



VPS	
2076	
Ø	125 - 670 m
Ø	125 - 730 m
Ø	125 - 750 m

OPTIMA		
Single axle or boggie		
1027	1032	1037
Ø 90 - 500 m	Ø 100 - 500 m	Ø 100 - 550 m
Ø 100 - 400 m	Ø 100 - 540 m	Ø 100 - 600 m
Ø 100 - 450 m	Ø 110 - 450 m	Ø 110 - 510 m
Ø 100 - 470 m	Ø 110 - 470 m	Ø 110 - 530 m
Ø 110 - 370 m	Ø 110 - 500 m	Ø 110 - 550 m
Ø 110 - 400 m	Ø 120 - 370 m	Ø 110 - 570 m
Ø 110 - 420 m	Ø 120 - 380 m	Ø 120 - 400 m
	Ø 125 - 350 m	Ø 120 - 420 m
	Ø 125 - 360 m	Ø 125 - 385 m
		Ø 125 - 400 m
		Ø 125 - 410 m
		Ø 135 - 370 m
		Ø 135 - 390 m



Fixed frame	
2076	
Ø	125 - 600 m
Ø	125 - 670 m
Ø	125 - 730 m
Ø	125 - 750 m



Boggie	
3000 - 3070	
Ø	120 - 680 m
Ø	120 - 720 m
Ø	125 - 650 m
Ø	125 - 680 m
Ø	125 - 700 m
Ø	135 - 550 m

ELECTRONIC REGULATION



IRRIDOSEUR



Irridoseur main fonctions

- Dosis regulation,
- Ending day and time display,
- 10 irrigation programs memory
- Delayed start and delayed stop,
- Area and gradient management
- Deferred start
- Cease watering function
- Actual and to date calculation of flow rate and operating hours
- Built-in diagnostic facility
- Analogical sensor (option)

TFT 5, 5» screen. Smartphone type programming, casing 8 completely sealed water and dust (IP67). Automotive type connectors

The GSM choice

Combine with the Irridoseur, the GSM equipment enables distant communication with the hose reel through SMS messages :

- Information posted on the mobile phone: end of irrigation alarm, detailed alert in case of dysfunction
- Distance irrigation programming: on and off function, change of data and program query

To improve performance when no direct sunny exposure, a new option is available: Additionnal solar panel kit

IRRICONTROL



Irricontrol main fonctions

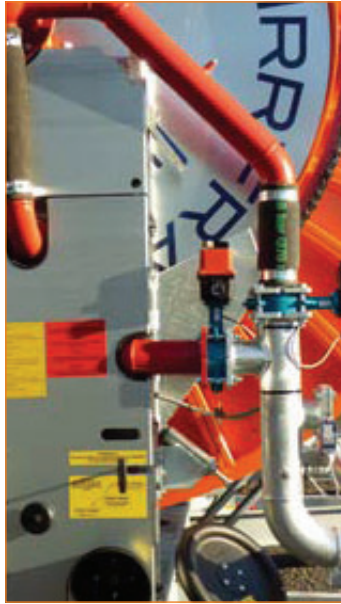
- Programmable for speed or duration,
- Speed regulation,
- Delayed start,
- Delayed stop,
- Ending day and time,
- Deferred start,
- Diagnostic facility,

ELECTRONIC REGULATION

MOTORIZATION BY ELECTRIC VALVE



Standard
from 1005 to 1020



Standard
from 1027 to 1037



Standard
from 1045 to 2076



Standard
from 3000 to 3070

ELECTRONIC EQUIPMENT



Measurement inductive sensor :

Located straight on the kinematics chain, this reliable sensor provides accurate counting.



Integrated electric set :

Including :

1/A 12 V low discharge battery 24 A/h.

2/A wide size solar panel providing a permanent charging of the battery and enabling an electric autonomy.

3/A charge limiter to preserve the battery



End-of-winding sensor :

Its action generates the electric cut of the winding and of the watering.



Safe winding sensor :

Warrant of a safe winding of the polyethylene, its location enables the sensor to detect any anomaly during the winding process.

COMPLEMENTARY OPTIONS

GUN

All Irrifrance reel machine packs includes, as a standard, Komet gun. You can select a different option for the guns based on your preferred choice with an additional cost.



Nelson guns: Nelson now includes with each SR100 and SR150 gun a set of 5 plastic nozzles and plastic nozzle holder. The warranty is unchanged: one year. Aluminum nozzles are now available in the Spare Parts catalog.

IRRIFRANCE hose reel options, more for your irrigation

- Low-speed kit that widens the operating range of the OPTIMA 1005 and 1010 reels by lowering the minimum flow rate to 10m³ per hour.
- Trolley guide kit for front or offset OPTIMA trolley and trolley 2008 series : a simple system useful in heavy or sloping ground to facilitate the move of polyethylene by making a guide furrow.
- Gun centring kit for offset trolley, to optimize the irrigation
- For the discharge valve a hose or an elbow is proposed to direct the flow of water towards the ground during the discharge.
- For use in rear unwinding, two options are to be selected: rear unwinding kit and hydraulic anchorage kit for trolley. (from 1027 boggie to 1037, 1045 1055 et 3070).
- Trolley riser kit (0.25 m) which can be added to the High Legs Pack of Optima and 2008 trolley. It is therefore recommended to ballast the trolley with the additional 2 cast iron weights.
- The three-point anchorage and offset hitch kits for connecting your reel machine to the tractor using the three-point hydraulic of the tractor.
- Optima distribution kit, for better irrigation around the periphery of the hose reel.

IRRIDOSEUR options for high precision irrigation

- IRRIDOSEUR Pressure transmitter kit, for measuring and controlling the intake of the dose depending on the variation of the pump pressure.
- IRRIDOSEUR distribution kit, for optimized irrigation at the periphery of the hose reel.
- GSM option (SIM card not included), for remote monitoring and control.
- Addition solar panel for GSM use, this is recommended in the case of a low sun.
- IRRIDOSEUR Beacon Kit, an option which allows to signal the end of the hose unwinding.



Trolley guide kit



Central hitch

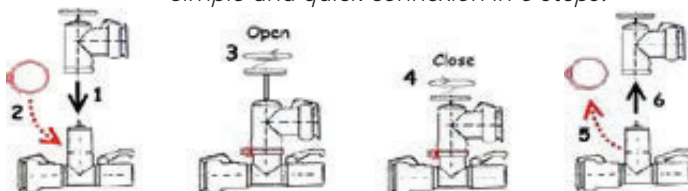


Three-point anchorage central and offset hitch



IRRIDOSEUR pressure transmitter kit

Simple and quick connexion in 6 steps:



A = connection B = Tee in line with VBZ valve



Exemple of assembly on above ground network



Exemple of mounting on a buried network

The VBZ valve, developed and marketed by IRRIFRANCE for more than 55 years, fulfills the function of hydrant for irrigation equipment (reels, pivots, ...). The system is adaptable on all networks, allowing simple and secure implementation. The simplicity of the mechanism, solid design, provide increased durability to the product.

NEW

OPTIMA 1021

MEDIUM PACK

A new machine, pre-equipped, all hydraulic, with all the ergonomic features for comfort and time-saving use, especially suitable for PE 100x450 meters.

Standard configuration:

- IRRIDOSEUR Turbine Motorization, the best electronics on the market for precision irrigation with optimized dose management by irrigation sector.
- Full hydraulic assembly: this kit includes turntable, stabilizers and front jack
- Standard painted version
- Wheels set 31/15,5 X 15 with adjustable track from 2000 to 2100
- OPTIMA Trolley base with an anti-crops washing system and automatic lifting
- Part circle gun KOMET 101 ULTRA 24° for 75 to 90 (nozzles kit set 16, 18, 20, 22)
- Part circle gun KOMET 101 ULTRA 24° for 100 to 110 (nozzles kit set 22, 24, 26, 28)
- Automatic lifting of the trolley at the end of the position
- Double supply pipe, so you can easily connect the reel machine regardless of the turntable rotating adopted.
- Connection hose Ø 84 length 6 m with HR male Ø 4" and FLD male Ø 4" coupler
- Tractor PTO shaft

Mandatory equipment:

- Motorized butterfly valve: depending on your type of water supply: network or individual pumping, you can either have an automatic valve, a discharge valve, or a dual valve that supports both: automatic and discharge.
- For the discharge valve a hose or an elbow is proposed to direct the flow of water towards the ground during the discharge.
- Skid kit or kit Wheel kit, according to field or crop specifications
- Four Packs for OPTIMA trolley: Low legs front Pack, High legs front Pack, High legs offset Pack, High legs front and offset Pack.

Optional equipment:

- Gun centring kit for offset trolley
- OPTIMA front and offset trolley guide, an option that traces a guide furrow, very useful on heavy or sloping ground.
- Trolley riser kit (0.25 m) which can be added to the High Legs Pack. It is therefore recommended to ballast the trolley with the additional 2 cast iron weights.



PREMIUM PACK

This second PACK is also pre-equipped, all hydraulics, it differs only in its PREMIUM type lifting, compatible with the 2008 trolley.

Standard configuration:

- IRRIDOSEUR Turbine Motorization, the best electronics on the market for precision irrigation with optimized dose management by irrigation sector.
- Full hydraulic assembly: this kit includes turntable, stabilizers and front jack
 - Standard painted version
 - Wheels set 31/15,5 X 15 adjustable track from 2000 to 2100
 - 2008 Trolley basis including the front wheel, Skid kit not compatible

- PREMIUM lifting
- Part circle gun KOMET 101 ULTRA 24° for 100 (nozzles kit set 22, 24, 26, 28)
- Connection hose Ø 84 length 6 m with HR male Ø 4" and FLD male Ø 4" coupler
- Double supply pipe, so you can easily connect the reel machine regardless of the turntable rotating adopted.
- Tractor PTO shaft

Mandatory equipment :

- Motorized butterfly valve: depending on your type of water supply: network or individual pumping, you can either have an automatic valve, a discharge valve, or a dual valve that supports both: automatic and discharge.
- For the discharge valve a hose or an elbow is proposed to direct the flow of water towards the ground during the discharge.
- Two Packs compatible with 2008 Trolley : High legs front Pack or High legs offset pack

Optional equipment:

- Trolley guide kit for 2008 series
- Gun centring kit for offset trolley
- Trolley riser kit (0.25 m) which can be added to the High Legs Pack. It is therefore recommended to ballast the trolley with the additional 2 cast iron weights.

All IRRIDOSEUR options are available for the two PACKS, see the full description on page 8.

A galvanized frame version is also available.

MICRO 44 - 50 - MINI 70 - 50

MICRO 44 -50



Featuring a low-speed turbine flanged on gear box, this machine operates from 4 m³/h with a low pressure drop it offers optimized performance.

Standard configuration:

- Sheet metal casing
- Tyres : 16/6,5 x 8 voie fixe
- Part circle gun JOLLY with nozzles Ø10, 12 et 14
- Connection hose Ø 50 length 3 meters with HR 2» male coupler and threaded 2» male coupler
- Automatic shut-off valve
- Threes Wheels frame

Optional equipment:

Two configurations available, according to your use:

GARDENING PACK with high profile trolley with adjustable track and nozzles at 1 meter from the ground.

This pack is also chosen for vineyards.

STADIUM QUAD PACK with low profile trolley, fixed track and nozzles at 0,4 meter from the ground. The QUAD coupler option is compatible, for easy move: this pack is ideal for urban areas, stadium or sports field.

MINI 70 - 50



MINI reel machine : robust and easy to use for small plots.

Standard configuration :

- Motorization bellows drive with mechanical speed regulation
- Galvanized Trolley with adjustable track
- Manual turntable
- Wheels set 185x70x13 voie manual
- Manual stabilizers and mechanical front jack
- Part circle gun KOMET type 163 with nozzles Ø 12-14-16
- Automatic trolley hooking and winch lifting device
- Connection hose Ø 84, 4 m length with HR male 3»/FLD male 3» coupler

Mandatory equipment:

Shut-off valve or Discharge valve or connection hose for discharge valve 6m HR 3» DV according to the water supply connection.

Optional equipment:

This reel machine can work with Wheel kit for front trolley OPTIMA or Skid kit for Pendular trolley according to the field and crop specifications

Optional mechanical equipment: Mechanical rotation of the turntable.

MICRO

Ø	44 - 120 m
Ø	50 - 110 m

MINI

Ø	63 - 280 m
Ø	70 - 200 m

Hydraulic Performances

Model	Ø PE	Length (m)	PE Thickness (mm)	RLL*	Flow rate (m ³ /h)	Inflow pressure (bars)	Irrigated strip width (m)	Average area (ha)
MICRO	Ø 44	120	3,5	90%	4 - 11,1	4 - 8,6	30 - 42	0,5
	Ø 50	110	3,7	90%	4 - 11,1	4 - 8,6	30 - 42	0,5
MINI	Ø 63	280	4,7	80%	8 - 24	5 - 10	42 - 60	1,5
	Ø 70	200	5	80%	8 - 30	5 - 10	54 - 72	1,3

Technical specifications

Model	Height. (m.)	Width (m.)	Length ex trolley (m.)	Length in trolley (m.)	Height under frame (m.)	Tyres	Weight ex water	inc water
MICRO	1,19	1,26	1,60	4,75	0,19	16 x 6,5 x 8	205	310
MINI	2,05	1,75	2,90	4,75	0,28	185 x 70 x 13	700	1000

*RLL : recovery last layer

OPTIMA 1000 PREMIUM PACK



OPTIMA 1000 galvanized version

The best features for this reel specially designed for gardening or vines. A machine recognized for its longevity.

Standard configuration:

- IRRICONTROL version 2 turbine Motorization
Standard painted version
- Simple axle/Wheels 200/60 X 14.5/ fixed track 1800
- Pendular trolley basis with adjustable track
- Premium lifting
- Part circle gun KOMET Twin 101 ULTRA 24» with nozzles kit set \varnothing : 16, 18, 20 et 22
- Mechanical rotation of the turntable
- Adjustable front jack
- Hydraulic stabilizers
- Connection hose \varnothing 84 length 6 m with HR male \varnothing 3" and FLD male \varnothing 3" coupler
- Tractor PTO shaft

Mandatory equipment:

- Shut-off valve or discharge electric valve according to the type of water supply.
 - Three packs available: Front or Offset trolley Pack, and Pendular trolley Pack with Wheels set 175x64 R14, the 2 cast iron option is required.
 - Wheel kit or Skid kit for Pendular trolley according to your plot and your crop.
- A galvanized frame version is available.



Turbine motorization



Pendular trolley

1000

\varnothing	63 - 300 m
\varnothing	75 - 250 m
\varnothing	82 - 220 m

Hydraulic performances

Model	\varnothing PE	Length (m)	PE Thickness (mm)	RLL*	Flow rate (m ³ /h)	Inflow pressure (bars)	Irrigated strip width (m)	Average area (ha)
1000	\varnothing 63	300	4,7	70%	8 - 30	6 - 10	42 - 60	1,53
	\varnothing 75	250	5,5	40%	8 - 35	6 - 10	45 - 66	1,37
	\varnothing 82	220	6	40%	10 - 40	5,5 - 10	45 - 72	1,32

Technical specifications

Model	Height. (m.)	Width (m.)	Length ex trolley (m.)	Length in trolley (m.)	Height under frame (m.)	Tyres	Weight ex water	inc water
1000	2,36	2,15	4,00	4,80	0,25	200 x 60 x 14,5	1400	2300

*RLL : recovery last layer

THE OPTIMA RANGE



OPTIMA RANGE AT A GLANCE

Ø 75 > Ø 125

De 225 à 650 m

1005

1010

1015

1020

1021

1027

1032

1037

1045

1055

Automatic lifting of the trolley

A lifting device adaptable to all field conditions.

- 100% hot dip galvanized steel trolley, articulated to prevent crop washing damages*.
- Equipped with skid or wheel kit.
- Various configurations available to meet your requirements :offset, central, high, low.
- Constant rain-gun angle for any gradient.

Turbine - performance and versatility

- Cast iron on all models except 1045 and 1055 in aluminium.
- Wide cross section, low-pressure loss.
- Wide range of flow rates, very high torque.

Transmission

- Various speed gearbox suiting light to heavy Applications: Irrigation misting and spreading
- Automatic unwinding brake.
- Tractor PTO rewind.

Winding safety

- Front back drum sensor for a better protection of the PE tube.

Stabilisers

- 100% hot dip galvanized.
- Mechanical pinion drive or hydraulic drive according to the model

Safety

- Designed distribution of loading pressure for a maximum stability
- Low centre of gravity
- Mechanical control of the automatic clutch
- Long reach stabiliser legs for maximum ground anchorage

"V" Profile chassis

- High mechanical strength,
- Height adjustable towing eye (except on 1000 / 1005/1010),
- High resistance Epoxy paint or galvanized,
- Full hydraulic for boggie chassis optional on 1026-1031-1036 standard on 1045 -1055

Turntable Rotation

- Turntable rotation and tabilisers are mechanical for 1005-1010 PACK ESSENTIEL and hydraulic for all other products.
- Multi- positions rotation angle,
- High gear ratio for an easy rotation
- Secured system with automatic safety lock.

Winding Control

- Mechanical drive with sensor (1005 -1010)
- Electronic management through Irricontrol or Irridoseur

Electronic Control

- Mono-block device, solenoid valves and pressure switch
- Easy to operate
- High protection

Hydraulic System from 1005 to 1020 Packs MEDIUM and PREMIUM and on all EXCELLIUM Packs. The IRRIFRANCE hydraulic functionalities include all the components for the easiest use and fast execution in operations.

- Three hydraulic functions from a distributor mounted on front jack: stabilisers, rotation of the turntable and front jack.
- Standalone hydraulic system for the Trolley

EQUIPMENT FOR ROAD

BRAKED AXLES AND ROAD LIGHTS OPTIONS AVAILABLE FOR OPTIMA RANGE



BRAKING SYSTEM

Description of the equipment for road traffic at 25km/H

- Specific tire mounting 25km/h - Braked axles for a technically permissible axle mass greater than 3.5 tonnes
- Parking brake
- Secondary attachment in the event of a broken coupling for a technically permissible axle mass of less than 3.5 tonnes
- Brake control in the event of a broken coupling for a technically permissible axle mass greater than 3.5 tonnes
- Brake control in the event of a broken coupling for a technically permissible axle mass greater than 3.5 tonnes with a rupture ring at 60 kilograms.

ROAD LIGHTS

Lighting and regulatory signaling device:

- At the rear of the machine: Position lights, brake lights, direction indicators, red triangular reflector.
- Lateral reflective device: Three in number on each side of the vehicle and orange in color
- Additional reflective device: 4 retro reflective red and white panels placed at the side ends, 2 facing the front, 2 facing the rear
- Special lights: A rotating beacon on the left side, a rotating beacon on the right side

For more information, please contact IRRIFRANCE sales department.



OPTIMA 1005 - 1010



ESSENTIEL PACK

A pack pre-equipped for the best value for money, simple use with the main functions, this pack is compatible with the pendular trolley.

PREMIUM PACK

An optimal configuration with an all-hydraulic assembly: stabilisers, rotation of the turntable and front jack, for easy and quick use. This pack is compatible with the OPTIMA trolley.

All IRRIDOSEUR options are available for the PREMIUM PACK, see the full description on page 8.

Both machines can be equipped with low-speed kit that widens the operating range of the OPTIMA 1005 and 1010 reels by lowering the minimum flow rate to 10m³ per hour.

A galvanized frame version is available.

1005

Ø	75 - 300 m
Ø	82 - 260 m

1010

Ø	75 - 380 m
Ø	82 - 300 m
Ø	90 - 270 m

Hydraulic Performances

Model	Ø PE	Length (m)	PE Thickness (mm)	RLL*	Flow rate (m ³ /h)	Inflow pressure (bars)	Irrigated strip width (m)	Average area (ha)
OPTIMA 1005	Ø 75	300	5,5	70%	12 - 35	6 - 9	48 - 66	2,0
	Ø 82	260	6	50%	17 - 45	5,5 - 9	54 - 72	1,9
OPTIMA 1010	Ø 75	380	5,5	40%	12 - 32	6 - 10	48 - 66	2,5
	Ø 82	300	6	70%	17 - 45	5,5 - 9,5	54 - 72	2,2
	Ø 90	270	6,7	60%	18 - 60	5,5 - 10	54 - 78	2,3

Technical specifications

Model	Height. (m.)	Width (m.)	Length ex trolley (m.)	Length in trolley (m.)	Height under frame (m.)	Tyres	Weight ex water	inc water
1005	2,76	2,28	5,25	6,30	0,32	10 x 80 x 12	1950	2950
1010	2,90	2,28	5,25	6,30	0,32	10 x 80 x 12	2100	3300

*RLL : recovery last layer

ESSENTIEL PACK - PREMIUM PACK



Turbine motorization



Automatic pendular trolley
lifting ESSENTIEL PACK



PREMIUM PACK lifting



Mechanical rotation
for ESSENTIEL PACK

ESSENTIEL PACK

Standard configuration:

- IRRICONTROL Turbine Motorization
- Standard painted version
- Wheels set 10,0x0,80x12 fixed track : 2000 mm
- Manual turntable with automatic locking
- Mechanical stabilizers
- Part circle gun KOMET 101 ULTRA 24° (nozzles kit set 16, 18, 20, 22)
- Pendular trolley base
- Connection hose Ø 84 length 6 m with HR male Ø 3" and FLD male Ø 3" coupler
- Automatic lifting trolley device
- Tractor PTO shaft

Mandatory equipment :

- Motorized butterfly valve: depending on your type of water supply: network or individual pumping, you can either have an automatic valve, a discharge valve, or a dual valve that supports both: automatic and discharge.
- Wheel kit or skid kit for Pendular trolley
- Two Trolley Packs :Front or Offset Pendular trolley pack

PREMIUM PACK

Standard configuration :

- IRRIDOSEUR Turbine Motorization
- Standard painted version
- Full hydraulic assembly
- Wheels set 10,0x0,80x12 fixed track: 2000 mm
- Optima trolley base
- Part circle gun KOMET 101 ULTRA 24° (nozzles kit set 16, 18, 20, 22)
- Automatic lifting of the trolley at the end of the position
- Double supply pipe, so you can easily connect the reel machine regardless of the turntable rotating adopted.
- 6m hose with Ø4 «male HR connector and Ø4» male connector
- Tractor PTO shaft

Mandatory equipment:

- Motorized butterfly valve: depending on your type of water supply: network or individual pumping, you can either have an automatic valve, a discharge valve, or a dual valve that supports both: automatic and discharge.
- Wheel kit or skid kit according to your plot and your crop
- Four OPTIMA trolley Packs: front low legs or high legs, offset high legs or front and offset high legs pack

Optional equipment :

- Front and offset OPTIMA trolley guide, an option that traces a guide furrow, very useful on heavy or sloping ground.
- Gun centring kit for offset trolley
- 2 Trolley cast iron weights kit

OPTIMA 1015 - 1020

ESSENTIEL PACK

A best seller configuration with an installed base of more than 10,000 machines in France and in Europe.

Standard configuration:

- IRRICONTROL Turbine Motorization
- Standard painted version
- Simple axle: Wheels set 10 x 0,75 x 15,3 10 plys with adjustable track from 1800 to 2100
- OPTIMA Trolley base
- Hydraulic turntable and stabilizers (distribution 2 ways)
- Manual front jack
- Automatic lifting of the trolley at the end of the position
- Part circle gun KOMET 101 ULTRA 24° for 75 to 90 (nozzles kit set 16, 18, 20, 22)
- Part circle gun KOMET 101 ULTRA 24° for 100 to 110 (nozzles kit set 22, 24, 26, 28)
- Double supply pipe, so you can easily connect the reel machine regardless of the turntable rotating adopted.
- Connection hose Ø 84 length 6 m with HR male Ø 4" and FLD male Ø 4" coupler Tractor PTO shaft

Mandatory equipment :

- Motorized butterfly valve: depending on your type of water supply: network or individual pumping, you can either have an automatic valve, a discharge valve, or a dual valve that supports both: automatic and discharge.
- For the discharge valve a hose or an elbow is proposed to direct the flow of water towards the ground during the discharge.
- Skid kit or kit Wheel kit according to the plot and the type of soil or crop.
- Four Packs for OPTIMA trolley: Low legs front Pack, High legs front Pack, High legs offset Pack, High legs front and offset Pack.



1020 ESSENTIEL PACK

Optional equipment OPTIMA trolley

- Front and offset OPTIMA trolley guide, an option that traces a guide furrow, very useful on heavy or sloping ground.
- Trolley riser kit (0.25 m) which can be added to the High Legs Pack. It is therefore recommended to ballast the trolley with the additional 2 cast iron weights.
- Lifting kit for boom Briggs type

You can also select the Wheels set 31/15,5X 15 with adjustable track from 2000 to 2100.

This pack can be fitted with an OPTIMA distribution kit for good irrigation in the periphery of the hose reel.

1015

Ø	75 - 400 m
Ø	82 - 350 m
Ø	82 - 370 m
Ø	90 - 340 m
Ø	90 - 350 m
Ø	100 - 260 m

1020

Ø	82 - 420 m
Ø	90 - 400 m
Ø	90 - 450 m
Ø	100 - 330 m
Ø	100 - 370 m
Ø	100 - 410 m
Ø	110 - 340 m

Hydraulic Performances

Model	Ø PE	Length (m)	PEThickness (mm)	RLL*	Flow rate (m³/h)	Inflow pressure (bars)	Irrigated strip width (m)	Average area (ha)
Optima 1015	Ø 75	400	6,8	70%	18 - 30	5,5 - 10	54 - 60	2,6
	Ø 82	350	6	50%	18 - 40	5,5 - 10	54 - 66	2,5
	Ø 82	370	6	70%	18 - 40	5,5 - 10	54 - 66	2,5
	Ø 90	340	6,7	60%	18 - 58	5,5 - 10	54 - 78	2,6
	Ø 90	350	6,7	80%	18 - 58	5,5 - 10	54 - 78	2,7
Optima 1020	Ø 100	260	7,4	80%	18 - 70	5,5 - 10	54 - 84	2,6
	Ø 82	420	7,5	70%	23 - 37	5,5 - 10	54 - 66	2,7
	Ø 90	400	6,7	80%	23 - 50	5,5 - 11	54 - 78	2,9
	Ø 90	450	8,2	35%	25 - 45	5,5 - 11	54 - 78	3,3
	Ø 100	330	7,4	40%	23 - 70	5,5 - 10	66 - 84	3,1
	Ø 100	370	7,4	80%	23 - 60	5,5 - 10	66 - 84	3,5
	Ø 100	410	7,4	30%	23 - 60	5,5 - 10	66 - 84	3,7
	Ø 110	340	8,2	80%	23 - 75	5,5 - 10	72 - 90	3,6

Technical specifications

Model	Height (m.)	Width (m.)	Length ex trolley (m.)	Length in trolley (m.)	Height under frame (m.)	Tyres	Weight ex water	inc water
Optima 1015	2,99	2,28	5,00	6,30	0,32	10 x 0,75 x 15	2400	3900
Optima 1020	3,16	2,32	5,10	6,40	0,32	10 x 0,75 x 15	2900	4900

*RLL : recovery last layer

ESSENTIEL-MEDIUM-PREMIUM PACK



Turbine motorization



Double supply pipe



ESSENTIEL and MEDIUM PACK lifting



PREMIUM PACK lifting

MEDIUM PACK

An all-hydraulic pack with the OPTIMA anti-crops washing system.

Standard configuration:

- IRRIDOSEUR Turbine Motorization
- Standard painted version
- Full hydraulic assembly: this kit includes turntable, stabilizers and front jack
- Wheels set 31/15,5 X 15 with adjustable track from 2000 to 2100
- Part circle gun KOMET 101 ULTRA 24° for 75 to 90 (nozzles kit set 16, 18, 20, 22)
- Part circle gun KOMET 101 ULTRA 24° for 100 to 110 (nozzles kit set 22, 24, 26, 28)
- OPTIMA Trolley base
- Automatic lifting of the trolley at the end of the position.
- Double supply pipe, so you can easily connect the reel machine regardless of the turntable rotating adopted.
- Connection hose Ø 84 length 6 m with HR male Ø 4" and FLD male Ø 4" coupler
- Tractor PTO shaft

Mandatory equipment :

- Motorized butterfly valve: depending on your type of water supply: network or individual pumping, you can either have an automatic

valve, a discharge valve, or a dual valve that supports both: automatic and discharge.

- For the discharge valve a hose or an elbow is proposed to direct the flow of water towards the ground during the discharge.
- Skid kit ou Wheel kit selon le dénivelé de la parcelle et le type de sol.
- Four Packs for OPTIMA trolley: Low legs front Pack, High legs front Pack, High legs offset Pack, High legs front and offset Pack.

Optional equipment for OPTIMA trolley

- Gun centring kit for offset trolley
- Front and offset OPTIMA trolley guide, according to the plot and the type of soil or crop.
- Trolley riser kit (0.25 m) which can be added to the High Legs Pack. It is therefore recommended to ballast the trolley with the additional 2 cast iron weights.
- Lifting kit for boom Briggs type

All IRRIDOSEUR options are available for the two PACKS MEDIUM and PREMIUM, see the full description on page 8.

A galvanized frame version is available for the three packs.

PREMIUM PACK

An all-hydraulic pack compatible with the 2008 trolley.

Standard configuration:

- IRRIDOSEUR Turbine Motorization
- Standard painted version
- Full hydraulic assembly: this kit includes turntable, stabilizers and front jack
- Wheels set 31/15,5 X 15 with adjustable track from 2000 to 2100
- Part circle gun KOMET 101 ULTRA 24° for 75 to 90 (nozzles kit set 16, 18, 20, 22)
- Part circle gun KOMET 101 ULTRA 24° for 100 to 110 (nozzles kit set 22, 24, 26, 28)
- 2008 Trolley basis including the front wheel, Skid kit not compatible
- PREMIUM lifting with standalone hydraulic
- Double supply pipe, so you can easily connect the reel machine regardless of the turntable rotating adopted.
- Connection hose Ø 84 length 6 m with HR male Ø 4" and FLD male Ø 4" coupler
- Tractor PTO shaft

Mandatory equipment:

- Motorized butterfly valve: depending on your type of water supply: network or individual pumping, you can either have an automatic valve, a discharge valve, or a dual valve that supports both: automatic and discharge.
- For the discharge valve a hose or an elbow is proposed to direct the flow of water towards the ground during the discharge.
- Two 2008 Trolley Pack available: High legs front Pack and High legs offset Pack.

Optional equipment 2008 Trolley

- Trolley guide kit for 2008 series, an option that traces a guide furrow, very useful on heavy or sloping ground.
- Gun centring kit for offset trolley
- Trolley riser kit (0.25 m) which can be added to the High Legs Pack. It is therefore recommended to ballast the trolley with the additional 2 cast iron weights.
- Lifting kit for boom Briggs type

OPTIMA 1027 - 1032 - 1037



OPTIMA 1027 with galvanization option

1027

Ø	90 - 500 m
Ø	100 - 400 m
Ø	100 - 450 m
Ø	100 - 470 m
Ø	110 - 370 m
Ø	110 - 400 m
Ø	110 - 420 m

1032

Ø	100 - 500 m
Ø	100 - 540 m
Ø	110 - 450 m
Ø	110 - 470 m
Ø	110 - 500 m
Ø	120 - 370 m
Ø	120 - 380 m
Ø	125 - 350 m
Ø	125 - 360 m

1037

Ø	100 - 550 m
Ø	100 - 600 m
Ø	110 - 510 m
Ø	110 - 530 m
Ø	110 - 550 m
Ø	110 - 570 m
Ø	120 - 400 m
Ø	120 - 420 m
Ø	125 - 385 m
Ø	125 - 400 m
Ø	125 - 410 m
Ø	135 - 370 m
Ø	135 - 390 m

Hydraulic Performances

Model	Ø PE	Length (m)	PE Thickness (mm)	RLL*	Flow rate (m³/h)	Inflow pressure (bars)	Irrigated strip width (m)	Average area (ha)
Optima 1027	Ø 90	500	8,2	50%	25 - 40	6 - 10	66 - 72	3,6
	Ø 100	400	7,4	30%	30 - 60	6 - 10	72 - 84	3,4
	Ø 100	450	9,1	40%	30 - 55	6 - 10	66 - 78	3,5
	Ø 100	470	9,1	100%	30 - 55	6 - 10	66 - 78	3,6
	Ø 110	370	8,2	40%	30 - 75	6 - 10	72 - 90	3,3
	Ø 110	400	8,2	70%	30 - 80	6 - 10	72 - 90	3,6
	Ø 110	420	10	90%	30 - 65	6 - 10	72 - 84	3,9
Optima 1032	Ø 100	500	9,1	50%	30 - 50	6 - 10	72 - 78	3,9
	Ø 100	540	11	85%	35 - 48	7 - 10	72 - 78	4,3
	Ø 110	450	10	40%	40 - 65	6,2 - 10	72 - 84	3,8
	Ø 110	470	10	55%	40 - 65	6,2 - 10	72 - 84	3,9
	Ø 110	500	10	80%	40 - 65	6,2 - 10	72 - 84	4,2
	Ø 120	370	8,9	80%	30 - 90	6 - 10	72 - 90	3,4
	Ø 120	380	8,9	90%	30 - 90	6 - 10	72 - 90	3,4
Optima 1037	Ø 125	350	11,4	70%	30 - 92	6 - 10	72 - 90	3,1
	Ø 125	360	11,4	85%	30 - 92	6 - 10	72 - 90	3,2
	Ø 100	550	11	40%	35 - 48	7 - 10	72 - 78	4,4
	Ø 100	600	11	80%	35 - 48	7,5 - 10,5	72 - 78	4,7
	Ø 110	510	12,3	30%	40 - 65	6,3 - 10,2	72 - 84	4,3
	Ø 110	530	12,3	60%	40 - 61	6,8 - 10,4	72 - 84	4,5
	Ø 110	550	12,3	75%	40 - 61	6,9 - 10,6	72 - 84	4,6
	Ø 110	570	12,3	90%	40 - 61	7 - 10,7	72 - 84	4,8
	Ø 120	400	11,4	70%	40 - 90	5,4 - 10,3	72 - 96	3,7
	Ø 120	420	11,5	90%	40 - 90	5,4 - 10,5	72 - 96	3,8
	Ø 125	385	11,4	75%	40 - 92	5,2 - 9,7	72 - 96	3,5
	Ø 125	400	11,4	80%	40 - 92	5,2 - 9,8	72 - 96	3,7
	Ø 125	410	11,4	95%	40 - 92	5,3 - 9,9	72 - 96	3,8
Ø 135	370	10	75%	40 - 100	5 - 9	72 - 96	3,5	
Ø 135	390	10	95%	40 - 100	5,1 - 9,1	72 - 96	3,6	

Technical specifications

Model	Height (m.)	Width (m.)	Length ex trolley (m.)	Length in trolley (m.)	Height under frame (m.)	Tyres	Weight ex water	inc water
Optima 1027	3,74	2,43	5,7	7,25	0,36	11,5 x 80 x 15,3	5350	8112
Optima 1032	3,78	2,43	5,7	7,25	0,36	11,5 x 80 x 15,3	5430	8767
Optima 1037	3,86	2,53	5,7	7,25	0,36	11,5 x 80 x 15,3	5570	9732

*RLL : recovery last layer

SIMPLE AXLE EXCELLIUM PACK



Motorization system



*Double supply pipe
and tool rack option*



Hydraulic front jack



Hydraulic stabilizers



Hydraulic rotation of the turntable

EXCELLIUM PACK

A very performant product family, pre-equipped with full hydraulic ,
for a high maneuverability in use

Standard configuration :

- IRRIDOSEUR Turbine Motorization
- Standard painted version
- Hydraulic jack and turntable (front 4 ways)
- Hydraulic stabilizers and standalone hydraulic lift
- Wheels set 400 x 60 x 15,5 14 plys with adjustable track from 1800 to 2100 mm
- Part circle gun KOMET 101 ULTRA 24° for 90 (nozzles kit set 16, 18, 20, 22)
- Part circle gun KOMET 140 ULTRA 24° for 100 to 110 (nozzles kit set 22, 24, 26, 28)
- Part circle gun KOMET 140 ULTRA 24° for 120 to 125 (nozzles kit set 24, 26, 28, 30)
- 2008 Trolley basis including the front wheel, Skid kit not compatible
- As standard, roll kit included, an outer guide which prevents friction of the polyethylene.
- Double supply pipe, so you can easily connect the reel machine regardless of the turntable rotating adopted.
- Flexible connector hose Ø90x2.7, length 6 meters
- Tractor PTO shaft

All IRRIDOSEUR options are available, see the full description on page 8.

A galvanized frame version is available for the all family product.

Mandatory equipment :

- Motorized butterfly valve: depending on your type of water supply: network or individual pumping, you can either have an automatic valve, a discharge valve, or a dual valve that supports both: automatic and discharge.
- For the discharge valve a hose or an elbow is proposed to direct the flow of water towards the ground during the discharge.
- Two 2008 Trolley Pack available: High legs front Pack and High legs offset Pack.

Optional equipment:

- Trolley guide kit for 2008 series, according to the plot and the type of soil or crop.
- Gun centring kit for offset trolley
- Trolley riser kit (0.25 m) which can be added to the High Legs Pack. It is therefore recommended to ballast the trolley with the additional 2 cast iron weights.
- Lifting kit for boom Briggs type
- The three-point anchorage and offset hitch kits for connecting your reel machine to the tractor using the three-point hydraulic of the tractor.

OPTIMA 1027 - 1032 - 1037



1027 Boggie
with galvanization option

1027

Ø	90 - 500 m
Ø	100 - 400 m
Ø	100 - 450 m
Ø	100 - 470 m
Ø	110 - 370 m
Ø	110 - 400 m
Ø	110 - 420 m

1032

Ø	100 - 500 m
Ø	100 - 540 m
Ø	110 - 450 m
Ø	110 - 470 m
Ø	110 - 500 m
Ø	120 - 370 m
Ø	120 - 380 m
Ø	125 - 350 m
Ø	125 - 360 m

1037

Ø	100 - 550 m
Ø	100 - 600 m
Ø	110 - 510 m
Ø	110 - 530 m
Ø	110 - 550 m
Ø	110 - 570 m
Ø	120 - 400 m
Ø	120 - 420 m
Ø	125 - 385 m
Ø	125 - 400 m
Ø	125 - 410 m
Ø	135 - 370 m
Ø	135 - 390 m

Hydraulic Performances

Model	Ø PE	Length (m)	PE Thickness (mm)	RLL*	Flow rate (m³/h)	Inflow pressure (bars)	Irrigated strip width (m)	Average area (ha)
Optima 1027	Ø 90	500	8,2	50%	25 - 40	6 - 10	66 - 72	3,6
	Ø 100	400	7,4	30%	30 - 60	6 - 10	72 - 84	3,4
	Ø 100	450	9,1	40%	30 - 55	6 - 10	66 - 78	3,5
	Ø 100	470	9,1	100%	30 - 55	6 - 10	66 - 78	3,6
	Ø 110	370	8,2	40%	30 - 75	6 - 10	72 - 90	3,3
	Ø 110	400	8,2	70%	30 - 80	6 - 10	72 - 90	3,6
	Ø 110	420	10	90%	30 - 65	6 - 10	72 - 84	3,9
Optima 1032	Ø 100	500	9,1	50%	30 - 50	6 - 10	72 - 78	3,9
	Ø 100	540	11	85%	35 - 48	7 - 10	72 - 78	4,3
	Ø 110	450	10	40%	40 - 65	6,2 - 10	72 - 84	3,8
	Ø 110	470	10	55%	40 - 65	6,2 - 10	72 - 84	3,9
	Ø 110	500	10	80%	40 - 65	6,2 - 10	72 - 84	4,2
	Ø 120	370	8,9	80%	30 - 90	6 - 10	72 - 90	3,4
	Ø 120	380	8,9	90%	30 - 90	6 - 10	72 - 90	3,4
	Ø 125	350	11,4	70%	30 - 92	6 - 10	72 - 90	3,1
Optima 1037	Ø 125	360	11,4	85%	30 - 92	6 - 10	72 - 90	3,2
	Ø 100	550	11	40%	35 - 48	7 - 10	72 - 78	4,4
	Ø 100	600	11	80%	35 - 48	7,5 - 10,5	72 - 78	4,7
	Ø 110	510	12,3	30%	40 - 65	6,3 - 10,2	72 - 84	4,3
	Ø 110	530	12,3	60%	40 - 61	6,8 - 10,4	72 - 84	4,5
	Ø 110	550	12,3	75%	40 - 61	6,9 - 10,6	72 - 84	4,6
	Ø 110	570	12,3	90%	40 - 61	7 - 10,7	72 - 84	4,8
	Ø 120	400	11,4	70%	40 - 90	5,4 - 10,3	72 - 96	3,7
	Ø 120	420	11,5	90%	40 - 90	5,4 - 10,5	72 - 96	3,8
	Ø 125	385	11,4	75%	40 - 92	5,2 - 9,7	72 - 96	3,5
	Ø 125	400	11,4	80%	40 - 92	5,2 - 9,8	72 - 96	3,7
	Ø 125	410	11,4	95%	40 - 92	5,3 - 9,9	72 - 96	3,8
	Ø 135	370	10	75%	40 - 100	5 - 9	72 - 96	3,5
	Ø 135	390	10	95%	40 - 100	5,1 - 9,1	72 - 96	3,6

Technical specifications

Model	Height (m.)	Width (m.)	Length ex trolley (m.)	Length in trolley (m.)	Height under frame (m.)	Tyres	Weight ex water	inc water
Optima 1027	4,02	2,43	5,7	7,61	0,56	10 x 75 x 15,3	6046	8807
Optima 1032	4,09	2,43	5,7	7,61	0,56	10 x 75 x 15,3	6130	9462
Optima 1037	4,10	2,53	5,7	7,61	0,56	10 x 75 x 15,3	6265	10427

*RLL : recovery last layer

BOGGIE EXCELLIUM PACK



Motorization system



Double supply pipe and Tool rack option



Lifting of the trolley



Retractable front jack



Hydraulic stabilizers



Adjustable tandem axle

EXCELLIUM PACK

Four wheels version, high stability, all hydraulic, you benefit from all the functionalities of the OPTIMA range.

Standard configuration :

- IRRIDOSEUR IRRIDOSEUR Turbine Motorization
- Standard painted version
- Hydraulic jack and hydraulic turntable (front 2 ways)
- Hydraulic stabilizers and hydraulic standalone lift (rear 3 ways)
- Part circle gun KOMET 140 ULTRA 24° for 100 to 110 (nozzles kit set 22, 24, 26, 28)
- Part circle gun KOMET 140 ULTRA 24° for 120 to 135 (nozzles kit set 24, 26, 28, 30)
- 2008 Trolley basis including the front wheel, Skid kit not compatible
- Basket Front bogie integrated into the frame and tool basket as standard at the rear of the spool for storing your connection tools: VBZ, flexible ...
- As standard, roll kit included, an outer guide which prevents friction of the polyethylene.
- Double supply pipe, so you can easily connect the reel machine regardless of the turntable rotating adopted.
- Flexible connector hose Ø90x2.7, length 6 meters
- Tractor PTO shaft

Mandatory equipment :

- Motorized butterfly valve: depending on your type of water supply: network or individual pumping, you can either have an automatic valve, a discharge valve, or a dual valve that supports both: automatic and discharge.
- For the discharge valve a hose or an elbow is proposed to direct the flow of water towards the ground during the discharge.
- Two possible packs for tires to choose according to the type of crop: with adjustable track from 1800 to 2250:
Offset Pack 4 Wheels set 400x60x15,5 14 plys or Pack 4 Wheels set 11,5 x 0,8 x 15,3 - 14 plys
- Two 2008 Trolley Pack available: High legs front Pack and High legs offset Pack.

Optional equipment :

- Trolley guide kit for 2008 series, according to the plot and the type of soil or crop.
- Gun centring kit for offset trolley
- Trolley riser kit (0.25 m) which can be added to the High Legs Pack. It is therefore recommended to ballast the trolley with the additional 2 cast iron weights.
- Lifting kit for boom Briggs type
- The three-point anchorage and offset hitch kits for connecting your reel machine to the tractor using the three-point hydraulic of the tractor.
- For use in rear unwinding, two additional options are to be selected: rear unwinding kit and hydraulic anchorage kit for trolley.

**All IRRIDOSEUR options are available, see the full description on page 8.
A galvanized frame version is available for the all family product.**

OPTIMA 1045 - 1055



Boggie 1045 with galvanization option

EXCELLIUM PACK

Sit-down machine, a family product range, recognized for its technical performances and durability

CAST TURBINE: TS2 Low Flow

This engine allows this machine range to expand their reach and to work with lower flow rates and higher speeds, allowing access to this equipment for restricted flow operations, and applications low dose crop raising (potato, beet, etc.).

or ALU TURBINE: for more classic use.

1045

Ø	110 - 560 m
Ø	120 - 460 m
Ø	120 - 520 m
Ø	125 - 440 m
Ø	125 - 500 m

1055

Ø	110 - 650 m
Ø	120 - 620 m
Ø	120 - 640 m
Ø	125 - 600 m

Hydraulic Performances

Model	Ø PE	Length (m)	PEThickness (mm)	RLL*	Flow rate (m ³ /h)	Inflow pressure (bars)	Irrigated strip width (m)	Average area (ha)
Optima 1045	Ø 110	560	12,3	100%	40 - 58	7 - 10	72 - 84	4,6
	Ø 120	460	11,5	30%	40 - 80	7 - 10	72 - 90	4,1
	Ø 120	520	11,5	90%	40 - 80	7 - 10	72 - 90	4,4
	Ø 125	440	11,4	30%	40 - 90	7 - 10	72 - 90	4,4
	Ø 125	500	11,5	90%	40 - 90	7 - 10	72 - 90	4
Optima 1055	Ø 110	650	12,3	70%	40 - 75	8 - 11	72 - 90	5,0
	Ø 120	620	13,2	80%	40 - 70	7 - 11	72 - 90	5,5
	Ø 120	640	13,4	95%	40 - 70	7 - 11	72 - 90	5,7
	Ø 125	600	14,0	80%	40 - 80	6,5 - 11	72 - 90	5,3

Technical specifications

Model	Height (m.)	Width (m.)	Length ex trolley (m.)	Length in trolley (m.)	Height under frame (m.)	Tyres	Weight ex water	inc water
Optima 1045	4,24	2,66	7,00	7,88	0,52	11,5 x 0,8 x 15,3	6620	11869
Optima 1055	4,37	2,66	7,00	7,88	0,52	11,5 x 0,8 x 15,3	6700	13247

*RLL : recovery last layer

BOGGIE EXCELLIUM PACK



Motorization system



Hydraulic stabilizers



2000 series articulated trolley and hydraulic lifting frame



Rear view

Standard configuration :

- Motorization Turbine IRRIDOSEUR
- You can choose: Francis type aluminum turbine or TS2 Pelton cast iron turbine
- Standard painted version
- Hydraulic jack and hydraulic turntable (front 2 ways)
- Hydraulic stabilizers and hydraulic standalone lift (rear 3 ways)
- Part circle gun KOMET 140 ULTRA 24° for 100 to 110 (nozzles kit set 22, 24, 26, 28)
- Part circle gun KOMET 140 ULTRA 24° for 120 to 125 (nozzles kit set 24, 26, 28, 30)
- 2008 Trolley basis including the front wheel, Skid kit not compatible
- Front tool basket and rear tool holder built into the frame included, for the storage of your VBZ connection tools, hose connector...
- As standard, Tool holder basket at the rear of the spool for storing your tools, VBZ connection, flexible...
- Double supply pipe, so you can easily connect the reel machine regardless of the turntable rotating adopted.
- Flexible connector hose Ø90x2.7, length 6 meters
- Tractor PTO shaft

Mandatory equipment:

- Alu ou Cast Turbine Pack
- Motorized butterfly valve: depending on your type of water supply: network or individual pumping, you can either have an automatic valve, a discharge valve, or a dual valve that supports both: automatic and discharge.
- For the discharge valve a hose or an elbow is proposed to direct the flow of water towards the ground during the discharge.
- Two possible packs for tires to choose according to the type of crop: with adjustable track from 1800 to 2250:
Offset Pack 4 Wheels set 400x60x15,5 14 plys or Pack 4 Wheels set 11,5 x 0,8 x 15,3 - 14 plys
- Two 2008 Trolley Pack available: High legs front Pack and High legs offset Pack.

Optional equipment :

- Trolley guide kit for 2008 series
- Gun centring kit for offset trolley
- For use in rear unwinding, two additional options are to be selected: rear unwinding kit and hydraulic anchorage kit for trolley.
- Compresseur, nous consulter

**All IRRIDOSEUR options are available, see the full description on page 8.
A galvanized frame version is available for the all family product.**

1040 VPS - 1040 VPS BIS



EXCELLIUM PACK

Sit-down machine, a family product range, recognized for its technical performances and durability

*All IRRIDOSEUR options are available, see the full description on page 8.
A galvanized frame version is also available.*

1040 VPS

Ø	100 - 500 m
Ø	100 - 550 m
Ø	110 - 400 m
Ø	120 - 360 m
Ø	125 - 350 m

Hydraulic Performances

Model	Ø PE	Length (m)	PEThickness (mm)	RLL*	Flow rate (m³/h)	Inflow pressure (bars)	Irrigated strip width (m)	Average area (ha)
1040 VPS	Ø 100	500	9,1	40%	30 - 50	6 - 10	66 - 78	4,2
	Ø 100	550	11	80%	35 - 48	7 - 10	66 - 78	4,4
	Ø 110	400	8,2	70%	30 - 80	6 - 10	72 - 90	3,7
	Ø 120	360	8,9	50%	30 - 90	6 - 10	72 - 90	3,5
	Ø 125	350	11,4	50%	30 - 92	6 - 10	72 - 90	3,4
1040 VPS BIS	Ø 100	450	9,1	50%	30 - 55	6 - 10	66 - 78	3,5
	Ø 110	500	10	40%	34 - 61	5,5 - 10	72 - 84	4,2
	Ø 110	530	12,3	50%	35 - 61	5,5 - 10	72 - 84	4,6
	Ø 120	410	8,9	60%	40 - 90	5,5 - 10	72 - 84	3,7
	Ø 125	400	9,3	70%	40 - 92	5,5 - 10	72 - 96	3,8

1040 VPS BIS

Ø	100 - 450 m
Ø	110 - 500 m
Ø	110 - 530 m
Ø	120 - 410 m
Ø	125 - 400 m

Technical specifications

Model	Height (m)	H Sit down (m)	Width (m.)	Length ex trolley (m)	Length in (m)	Height under frame	Height Gooseneck	Tyres	Weight ex water	Weight inc water
1040 VPS	3,55	3,20	3,00	5,60	6,56	0,35	0,34	385 x 65 x 22,5	4500	7200
1040 VPS BIS	3,78	3,43							4800	8000

*RLL : recovery last layer

EXELLIUM PACK



Motorization system



Hydraulic front jack



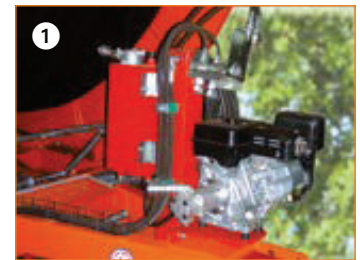
Chain and pinion drive



Tool rack



Hydraulic stabilizers



Standard configuration :

- Cast iron Turbine TS2 Type Pelton
 - Turbine drive Irridoseur motorized with electric butterfly valve
 - Standard painted version
 - Wheels set 385x65XR22,5 standard track 2600
 - Part circle gun KOMET Twin 101 ULTRA 24» with nozzles kits 16, 18, 20 et 22 on 100 et 110
 - Part circle gun KOMET Twin 140 ULTRA 24» with nozzles kit 24, 26, 28 et 30 on 120 et 125
 - Galvanized and articulated trolley with 4 cast iron weights and equipped with 2 wheels
 - Automatic trolley hooking at the end of the position
 - Sit down system during irrigation
 - Trolley lifting device connected with hydraulic lifting stabilizers
 - Wheel lifting system separate left and right
 - Hydraulic turntable
 - Hydraulic stabilizers
 - Hydraulic front jack
 - Double supply pipe Ø114, so you can easily connect the reel machine regardless of the turntable rotating adopted.
 - VPS trolley base
- Flexible connector hose Ø90x2.7, length 6 meters
- Tractor PTO shaft

Mandatory equipment:

- Motorized butterfly valve: depending on your type of water supply: network or individual pumping, you can either have an automatic valve, a discharge valve, or a dual valve that supports both: automatic and discharge.
- For the discharge valve a hose or an elbow is proposed to direct the flow of water towards the ground during the discharge.
- Skid kit (front trolley 1005 1010) or Front trolley pad kit
- VPS front Trolley Pack or Offset trolley Pack

Optional equipment :

- VPS Front Trolley guide or Offset trolley guide (only with skid kit)
- Autonomous hydraulic system 7cv with elongated hitch ring (mandatory) VISUAL 1
- Cover for the autonomous hydraulic system VISUAL 2
- Roll kit , an outer guide which prevents friction of the polyethylene.
- Compressor kit on demand

Also available VPS 1040 BIS Ø 100 thickness 10mm length 500 meter, on demand.

1050 VPS - 1055 VPS



1050 VPS with galvanization option

EXCELLIUM PACK

An acclaimed machine to its technical performance in all Europe, available on two types of turbines

CAST TURBINE: TS2 Low Flow

This engine allows this machine range to expand their reach and to work with lower flow rates and higher speeds, allowing access to this equipment for restricted flow operations, and applications low dose for crop raising (potato, beet, etc.).

or ALU TURBINE: for more classic use.

All IRRIDOSEUR options are available, see the full description on page 8.

A galvanized frame version is available for the all family product.

1050 VPS

Ø	110 - 560 m
Ø	110 - 600 m
Ø	120 - 520 m
Ø	125 - 500 m

1055 VPS

Ø	110 - 650 m
Ø	120 - 620 m
Ø	125 - 600 m

Hydraulic Performances

Model	Ø PE	Length (m)	PEThickness (mm)	RLL*	Flow rate (m³/h)	Inflow pressure (bars)	Irrigated strip width (m)	Average area (ha)
1050 VPS	Ø 110	560	12,3	100%	40 - 60	7 - 10	72 - 84	4,6
	Ø 110	600	12,3	21%	40 - 60	7 - 10	72 - 84	4,7
	Ø 120	520	11,5	90%	40 - 80	7 - 10	72 - 90	4,4
	Ø 125	500	11,4	90%	40 - 90	7 - 10	72 - 90	4,4
1055 VPS	Ø 110	650	12,3	70%	40 - 52	8 - 11	72 - 84	5,2
	Ø 120	620	13,2	80%	40 - 70	7 - 11	72 - 90	5,3
	Ø 125	600	14,0	90%	40 - 80	6,5 - 11	72 - 90	5,3

Technical specifications

Model	Height (m)	H Sit down (m)	Width (m.)	Length ex trolley (m)	Length in (m)	Height under frame	Height Gooseneck	Tyres	Weight ex water	Weight inc water
1050 VPS	3,70	3,45	3,06	5,10	6,28	0,35	0,34	385 x 65 x 22,5	6500	9800
1055 VPS	3,88	3,63		5,60	6,78				7620	11300

*RLL : recovery last layer

EXELLIUM PACK



Motorization system Alu Turbine



Hydraulic front jack



Chain and pinion drive



Tool rack



Hydraulic stabilizers



Standard configuration :

- Turbine Aluminum type Francis or Turbine cast TS2 type Pelton
- Turbine drive IRRIDOSEUR motorized with electric butterfly valve
- Standard painted version
- Wheels set 385x65XR22,5 standard track 2600
- Part circle gun KOMET Twin 101 ULTRA 24» with nozzles kits 16, 18, 20 and 22 on Ø 100 and 110
- Part circle gun KOMET Twin 140 ULTRA 24» with nozzles kit 24, 26, 28 and 30 on Ø 120 and 125
- Galvanized and articulated trolley with 4 cast iron weights and equipped with 2 wheels
- Automatic trolley hooking at the end of the position
- Sit down system during irrigation
- Trolley lifting device connected with hydraulic lifting stabilizers
- Wheel lifting system separate left and right
- Hydraulic turntable
- Hydraulic stabilizers
- Hydraulic front jack
- Double supply pipe Ø 114, so you can easily connect the reel machine regardless of the turntable rotating adopted.
- Flexible connector hose Ø90x2.7, length 6 meters
- VPS trolley base
- Tractor PTO shaft

Mandatory equipment :

- pack Turbine ou pack Turbine fonte selon votre choix
- Motorized butterfly valve: depending on your type of water supply: network or individual pumping, you can either have an automatic valve, a discharge valve, or a dual valve that supports both: automatic and discharge.
- For the discharge valve a hose or an elbow is proposed to direct the flow of water towards the ground during the discharge.
- Skid kit (front trolley 1005 1010) or Front trolley pad kit
- VPS front Trolley Pack or Offset trolley Pack

Optional equipment :

- VPS Front Trolley guide or Offset trolley guide (only with skid kit)
- Autonomous hydraulic system 7cv with elongated hitch ring (mandatory)
- Cover for the autonomous hydraulic system
- Roll kit, an outer guide which prevents friction of the polyethylene.
- Compressor on demand

2076 - 2061 VPS - 2076 VPS



2076 serie 2000

SÉRIE 2000 - 2076 EXCELLIUM PACK

This machine can be fitted in two versions: Narrow track or Wide track

SÉRIE 2000 - 2061 VPS ET 2076 VPS EXCELLIUM PACK

Sit down version

2076

Ø	125 - 600 m
Ø	125 - 670 m
Ø	125 - 730 m
Ø	125 - 750 m

2076 VPS

Ø	125 - 600 m
Ø	125 - 670 m
Ø	125 - 730 m
Ø	125 - 750 m

2061 VPS

Ø	125 - 600 m
Ø	125 - 650 m
Ø	135 - 550 m
Ø	135 - 600 m

Hydraulic Performances 2076 - 2076 VPS

Model	Ø PE	Length (m)	PE Thickness (mm)	RLL*	Flow rate (m³/h)	Inflow pressure (bars)	Irrigated strip width (m)	Average area (ha)
2076	Ø 125	600	14	70%	40 - 76	7 - 11	72 - 90	5,4
	Ø 125	670	14,0	30%	40 - 72	7 - 11	72 - 90	5,5
	Ø 125	730	14,0	80%	40 - 70	7,5 - 11,5	72 - 84	6,0
	Ø 125	750	14,0	100%	40 - 70	7,5 - 11,5	72 - 84	6,2

Hydraulic Performances 2061 VPS

Model	Ø PE	Length (m)	PE Thickness (mm)	RLL*	Flow rate (m³/h)	Inflow pressure (bars)	Irrigated strip width (m)	Average area (ha)
2061 VPS	Ø 125	600	14,0	30%	40 - 76	7 - 11	72 - 90	5,4
	Ø 125	650	14,0	80%	40 - 72	7 - 11	72 - 84	5,5
	Ø 135	550	14,5	20%	40 - 72	7,5 - 10	72 - 90	4,8
	Ø 135	600	14,5	70%	40 - 72	7 - 10,5	72 - 90	5,3

Technical specifications 2076

Model	Height (m.)	Width (m.)	Length ex trolley (m.)	Length in trolley (m.)	Height under frame (m.)	Tyres	Weight ex water	inc water
Optima 2076	4,45	2,56	9,10	10,00	0,64	385 x 65 x 22,5	8400	13800

Technical specifications 2061 VPS - 2076 VPS

Model	Height (m)	H Sit down (m)	Width (m.)	Length ex trolley (m)	Length in (m)	Height under frame	Tyres	Weight ex water	Weight inc water
2061-2076 VPS	4,38	2,99	3,99	6,00	7,20	0,30	435 x 55 x R19	7200	11600

*RLL : recovery last layer

EXELLIUM PACK



Motor shaft plus synchro



2076 motorization



Dual stabilizers



Disengageable fork head



2076 motorization

SÉRIE 2000 - 2076 EXELLIUM PACK

Standard configuration :

- IRRIDOSEUR Turbine Motorization
- Standard painted version
- Wheels set 400x55x22,5 BKT Flotation 558
- with adjustable track from 1900 to 2300 for narrow track with two high axles 180
- with adjustable track from 2250 to 2700 for wide track with two simple axles
- Part circle gun KOMET Twin 140 ULTRA 24» with nozzles kit 24, 26, 28 et 30 on 125
- Hydraulic stabilizers and lifting trolley.
- Hydraulic front jack.
- Hydraulic lateral distributor.
- Double supply pipe
- Galvanized and articulated trolley with 4 cast iron weights and front wheel
- 3 positions trolley beam
- Rear unwinding system
- Auto shut off valve in standard.
- Hydraulic anchorage of the trolley
- The rear unwinding system and the hydraulic anchorage of the trolley are included in the Pack.

- Double supply pipe, so you can easily connect the reel machine regardless of the turntable rotating adopted.
- Connection hose Ø 100 length 8m and FLD male 5»coupler

Mandatory equipment:

- Motorized butterfly valve: depending on your type of water supply: network or individual pumping, you can either have an automatic valve, a discharge valve, or a dual valve that supports both: automatic and discharge.

Optional equipment:

- Automatic or Discharge valve
- Tyres Options:
 - 550 x 60 x 22,5 - high axle height 180, on wide track, mini way: 2500
 - 315 x 75 x 22.5 - high axle height 180, on wide track, mini way: 2350
 - 315 x 75 x 22.5 - high axle height 180, on narrow track, mini way: 1800
- mini way: only available with standard tyres
- Gun centring kit for offset trolley
- Trolley guide kit for 2008 series
- Compressor on demand

SÉRIE 2000 - 2061 VPS ET 2076 VPS EXELLIUM PACK

Standard configuration :

- IRRIDOSEUR Turbine Motorization
- Standard painted version
- Part circle gun KOMET Twin 140 ULTRA 24» avec nozzles kit set 24, 26, 28 and 30 on Ø125
- Trolley 4 Wheels and trolley skid included
- Boggie lift, right and left, with individual control system
- Front jack, turntable and stabilizers, automatic trolley locking and trolley hydraulic lift
- Articulated Boggie 4 Wheels 385 X 65 X 22,5
- Connection hose with dispenser Ø 100 length 8m and FLD male 4»coupler

Mandatory equipment :

- Motorized butterfly valve: depending on your type of water supply: network or individual pumping, you can either have an automatic valve, a discharge valve, or a dual valve that supports both: automatic and discharge.

Optional equipment:

- Autonomous hydraulic system in option

Vps : sit down machine

3070



3070 galvanization included in standard version

EXCELLIUM PACK

A new efficient and competitive machine, a robust structure with all Irrifrance functionalities, equipped with PE 100 polyethylene to limit the pressure drop.

*All IRRIDOSEUR options are available, see the full description on page 8.
The GSM option is specific to this model, because the power cable is longer: the box is mounted on the side opposite the motorization.*

3070	
Ø	120 - 680 m
Ø	120 - 720 m
Ø	125 - 650 m
Ø	125 - 680 m
Ø	125 - 700 m
Ø	135 - 550 m

Hydraulic Performances								
Model	Ø PE	Length (m)	PE Thickness (mm)	RLL*	Flow rate (m³/h)	Inflow pressure (bars)	Irrigated strip width (m)	Average area (ha)
3070	Ø 120	680	11,5	60%	40 - 80	6 - 10	72 - 90	6,1
	Ø 120	720	11,5	90%	40 - 80	6 - 10	72 - 90	6,5
	Ø 125	650	11,4	56%	40 - 80	6 - 10	72 - 90	5,8
	Ø 125	680	11,4	80%	40 - 80	6 - 10	72 - 90	6,1
	Ø 125	700	11,4	95%	40 - 80	6 - 10	72 - 90	6,3
	Ø 135	550	12,3	100%	40 - 80	6 - 10	72 - 90	5

Technical specifications								
Model	Height (m.)	Width (m.)	Length ex trolley (m.)	Length in trolley (m.)	Height under frame (m.)	Tyres	Weight ex water	inc water
Optima 3070	4,56	2,85	7,16	8,27	0,5	400 x 60 x 15,3 14 PLYS	8200	13970

*RLL : recovery last layer

BOGGIE EXCELLIUM PACK



Motorization system



Chain and pinion drive



Hydraulic front jack



Hydraulic lifting



Hydraulic stabilizers



3070 view



Rear view

Standard configuration:

- IRRIDOSEUR Turbine Motorization
- Pipe with PE 100 pure resin, to reduce low pressure drop
- Galvanized frame included
- Wheels set 400 x 60 x 15.3 14 plys with adjustable track from 2400 to 2700 mm
- Part circle gun KOMET Twin 140 ULTRA sur Ø 120 et 125 (nozzles Ø 24, 26, 28, 30)
- Boggie braked axles 4 wheels included in the standard configuration
- Compact gearbox-turbine assembly equipped with 4 speeds
- Galvanized and articulated trolley with 4 cast iron weights and front wheel
- Standalone trolley lifting device
- Automatic trolley hooking at the end of position
- Hydraulic turntable
- Hydraulic stabilizers
- Double supply pipe, so you can easily connect the reel machine regardless of the turntable rotating adopted.
- Connection hose Ø 100 length 6 meters HR male 4" coupler
- Hydraulic retractable front jack
- Document holder basket
- Tractor PTO shaft
- Front basket on frame

Mandatory equipment :

- Motorized butterfly valve: depending on your type of water supply: network or individual pumping, you can either have an automatic valve, a discharge valve, or a dual valve that supports both: automatic and discharge.
- For the discharge valve a hose or an elbow is proposed to direct the flow of water towards the ground during the discharge.
- Two trolley Packs : front or offset trolley Pack

Optional equipment :

- Gun centring kit for offset trolley
- Trolley guide kit for 2008 series
- For use in rear unwinding, two additional options are to be selected: rear unwinding kit and hydraulic anchorage kit for trolley.
- Tool basket at the rear of the spool to store your VBZ connection tools, flexible ...
- Roll kit, an outer guide which prevents friction of the polyethylene.
- Compressor on demand

This machine can be equipped with the option of road lights, see page 13